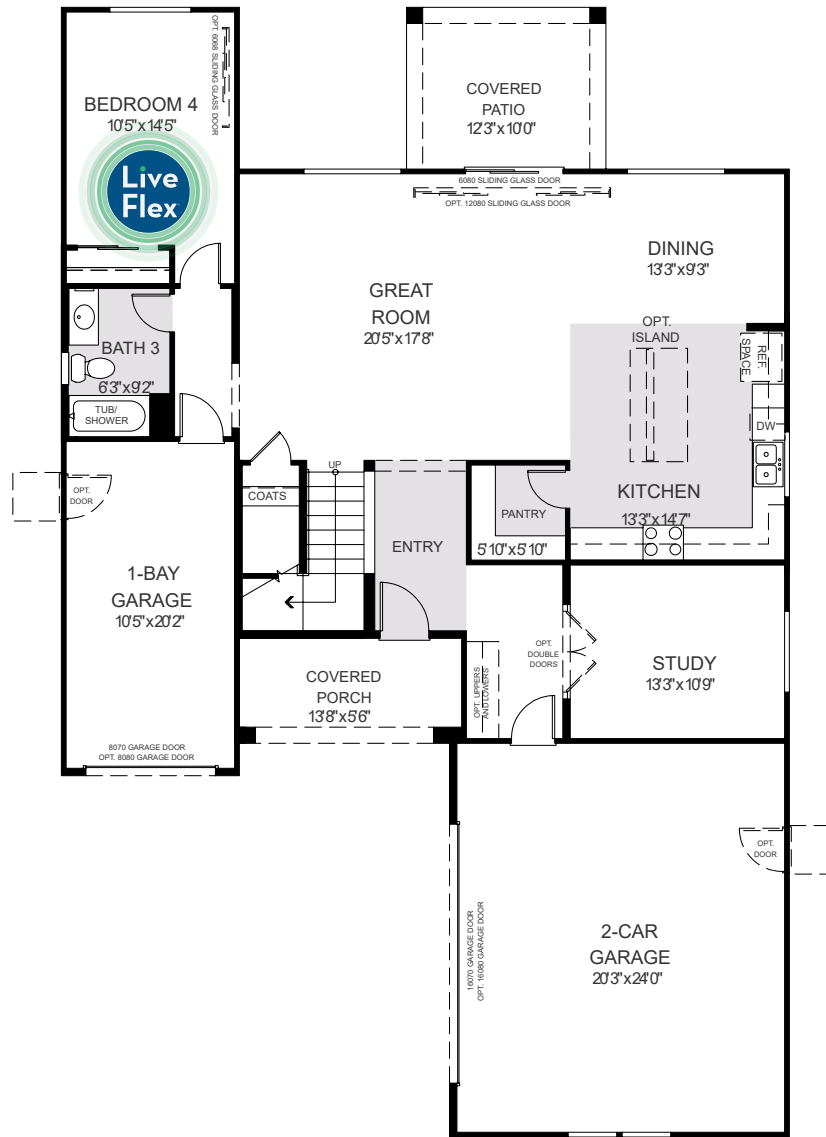


# Mazatal

4 to 6 Bedrooms - 3 Baths - 2,644 to 2,868 Sq. Ft.

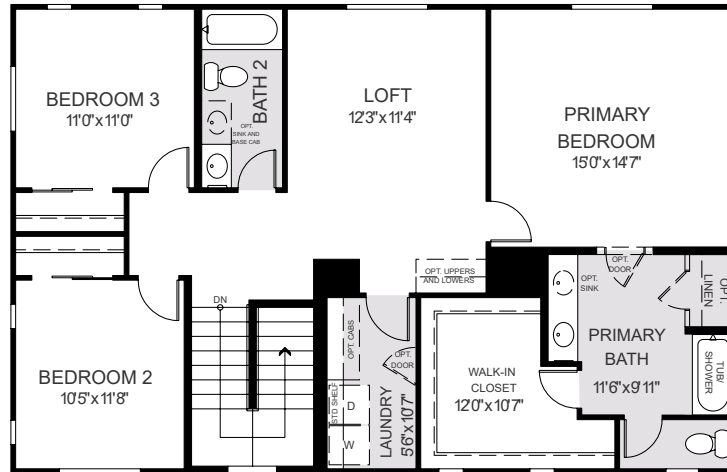


FIRST FLOOR

©2021 Landsea Homes. Plans, pricing, product information, square footage, amenities and community/neighborhood information are subject to change without notice or obligation. Photographs, renderings, and floor plans, are for representation purposes only and may not reflect the exact features or dimensions of your home. Some features and options shown may not be offered in your community. Please see the actual purchase agreement for additional information, disclosures and disclaimers relation to your home and its features. All rights reserved and strictly enforced. This is not an offering where prohibited by law. No information contained herein shall be deemed to constitute a representation or warranty of any kind. Please consult a Landsea Homes sales representative for details. CalBRE#02030520.

## Mazatal

4 to 6 Bedrooms - 3 Baths - 2,644 to 2,868 Sq. Ft.



SECOND FLOOR

©2021 Landsea Homes. Plans, pricing, product information, square footage, amenities and community/neighborhood information are subject to change without notice or obligation. Photographs, renderings, and floor plans, are for representation purposes only and may not reflect the exact features or dimensions of your home. Some features and options shown may not be offered in your community. Please see the actual purchase agreement for additional information, disclosures and disclaimers relation to your home and its features. All rights reserved and strictly enforced. This is not an offering where prohibited by law. No information contained herein shall be deemed to constitute a representation or warranty of any kind. Please consult a Landsea Homes sales representative for details. CalBRE#02030520.