

# GENEVA

Starting from \$491,900  
Est. Mortgage


(623) 399-4783





## OVERVIEW

 Litchfield Park, AZ

 5 Bedrooms

 2,801–2,805 Sq. Ft.

 From \$380s - \$590s

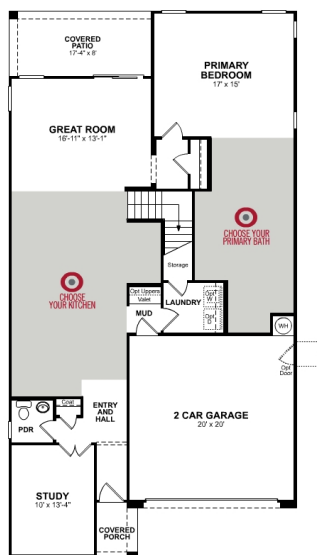
 4 Bathrooms

The Geneva is a two-story home with a first-floor primary bedroom conveniently located at the rear of the home for privacy. The spacious kitchen with a colossal walk-in pantry is perfect for cooking gourmet recipes. Upstairs, enjoy a relaxing game night with family and friends in your spacious loft.

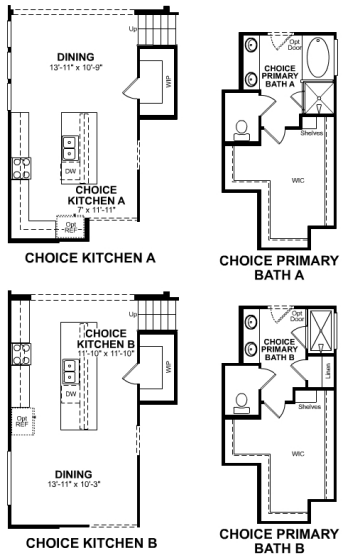
## FLOORPLAN

### 1st Floor

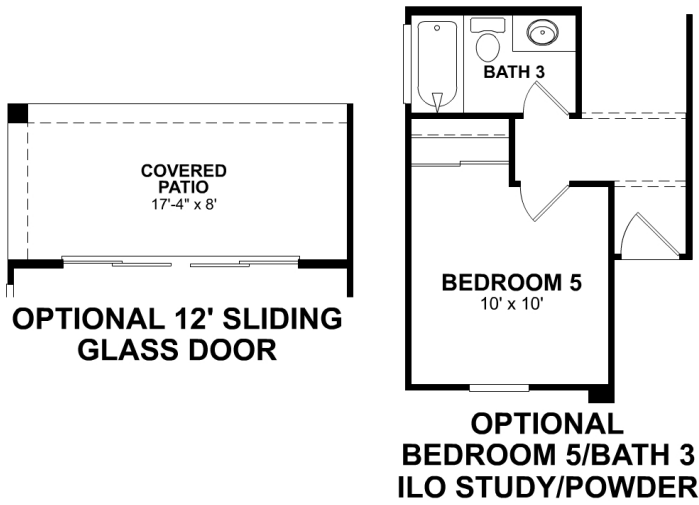
Base Floorplan



Room Choices Floorplan

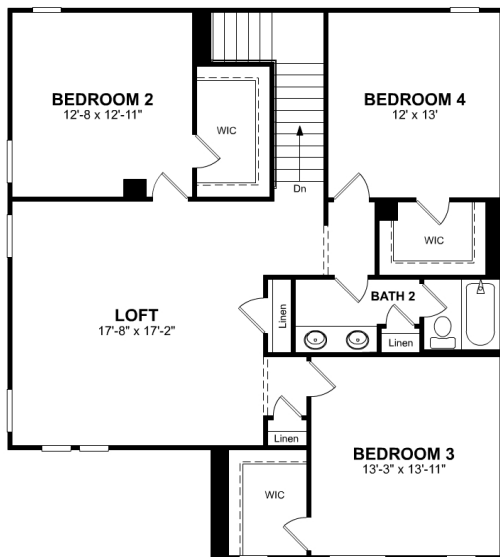


Paid Options Floorplan

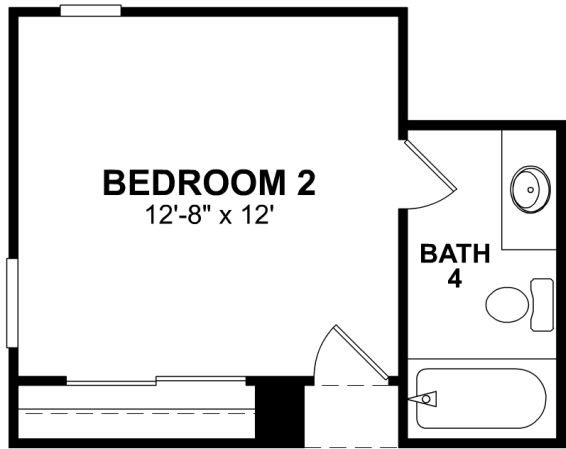


**2nd Floor**

Base Floorplan



Paid Options Floorplan



## **OPTIONAL BEDROOM 2/ BATH 4 SUITE ILO BEDROOM 2**

### **DETAILS AND FEATURES**

---

- The foyer provides a welcoming space as guests enter your home
- The chef-inspired kitchen features spacious countertops and a walk-in pantry to maximize storage
- The primary bedroom on the main floor gives you easy access to the kitchen and living areas while maintaining your privacy
- Located at the entry point from the garage, the mud room and laundry room can be used to drop off items or to clean off before entering