

# SHILOH

Starting from \$416,900  
Est. Mortgage

(623) 399-4783





## OVERVIEW

 Litchfield Park, AZ

 4 Bedrooms

 1,943–1,949 Sq. Ft.

 From \$380s - \$590s

 2 Bathrooms

The Shiloh is a single-story home with a spacious floorplan centered around an open-concept kitchen and great room. Relax in your primary bedroom and spa-inspired primary bathroom, located at the rear of the home for ideal views and a cozy, private oasis.

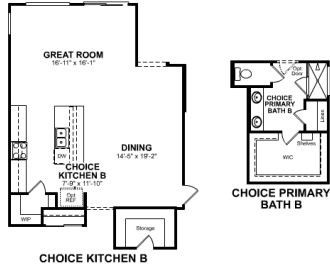
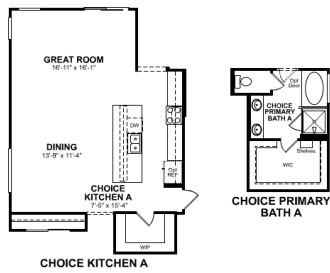
## FLOORPLAN

### 1st Floor

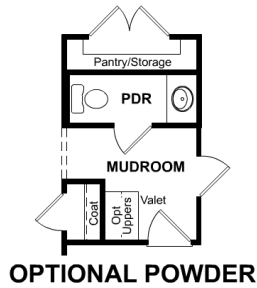
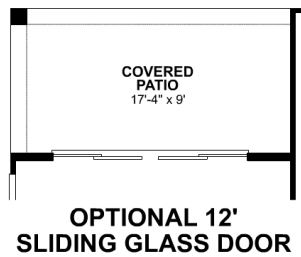
Base Floorplan



Room Choices Floorplan



**Paid Options Floorplan**



**DETAILS AND FEATURES**

- Open-concept kitchen includes ample countertop space, a center island, and an expansive walk-in pantry
- Primary bedroom suite is located at the back of the home for best exterior views and exposure to natural light
- Formal entry hall and foyer creates a welcome environment for guests and leads to a vast great room
- Sizeable laundry room with space for full-size washer and dryer, optional cabinets, and an optional sink