

ELLENTON

Starting from \$391,900
Est. Mortgage

(623) 399-4783





OVERVIEW

 Litchfield Park, AZ

 3 Bedrooms

 1,685 Sq. Ft.

 From \$380s - \$590s

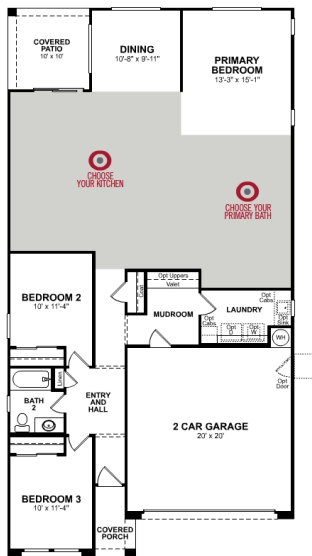
 2 Bathrooms

The Ellenton is a single-story home featuring a bright kitchen with a center island and a spacious great room that opens to a covered patio, perfect for backyard barbecues. The split bedroom floorplan creates a private primary bedroom oasis.

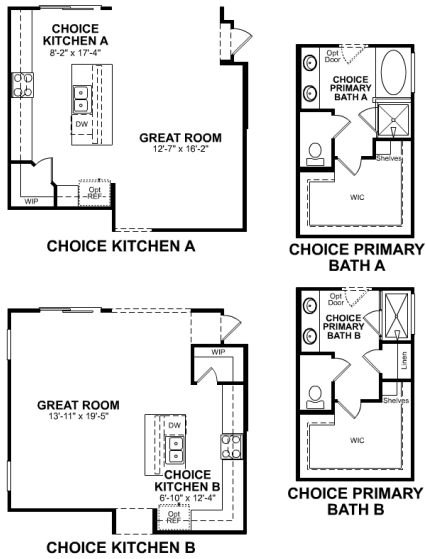
FLOORPLAN

1st Floor

Base Floorplan



Room Choices Floorplan



DETAILS AND FEATURES

- Living areas planned so your furniture fits easily into the home
- The primary bedroom is conveniently located where it gives you easy access to the kitchen and living areas while still maintaining your privacy
- Secondary bedrooms and closets are designed at optimal sizes to fit the needs of your family and guests
- Located at the entry point from the garage, the mud room and laundry room can be used to drop off items or to clean off before entering