

# OAK CREEK - 1,986 SQ. FT.



2 STORIES



3-5 BEDS



2.5-3 BATHS



2 BAYS

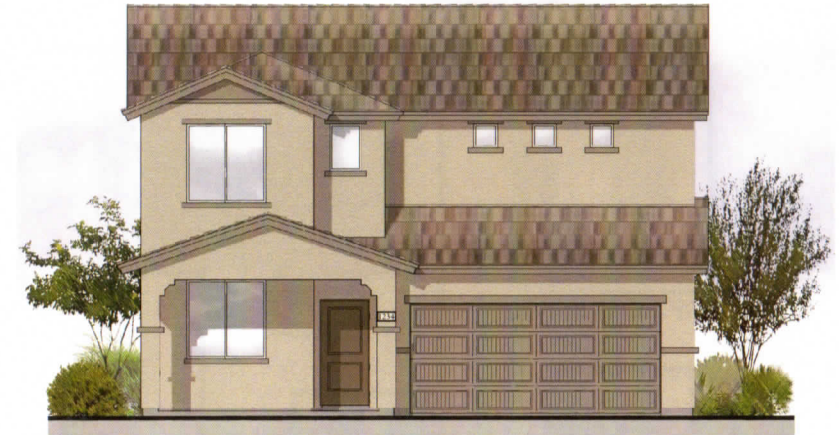
# GARRETT-WALKER HOMES

by LANDSEA® HOMES



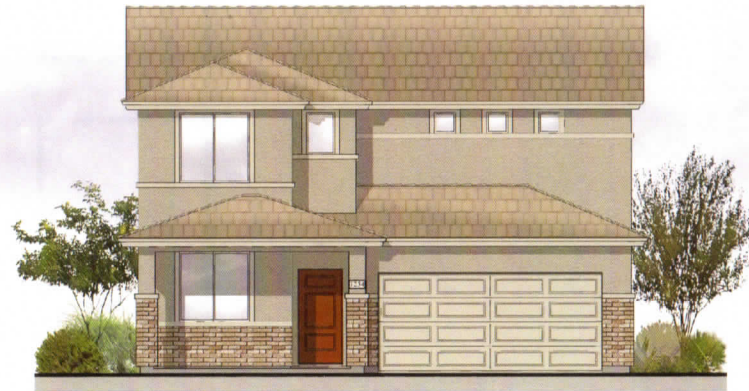
## ELEVATION A

Artist Conception. Optional coach lights and garage door windows available.  
See Builder Representative for more information.



## ELEVATION B

Artist Conception. Optional coach lights, stone veneer and garage door windows available. See Builder Representative for more information.



## ELEVATION C

Artist Conception. Optional coach lights and garage door windows available.  
See Builder Representative for more information.

**\*PRELIMINARY\***  
**SUBJECT TO**  
**CHANGE**

[WWW.GWHAZ.COM](http://WWW.GWHAZ.COM)



All square footages and room dimensions are approximate and are subject to field variation. Any and all furniture and landscaping is shown for illustrative purposes only. Garrett-Walker Homes strives to continually improve our communities and plans, therefore, homes, features, and community information are subject to change without notice or obligation. See Builder Representative for additional details. Constructed By: JJAZ Construction, LLC ROC#275051, Sales By: GW Sales, LLC Broker#BR531160000, 7/12/2019

# SUNDANCE

# OAK CREEK - 1,986 SQ. FT.

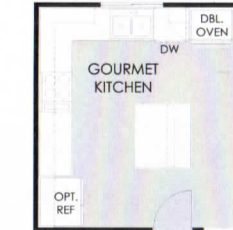
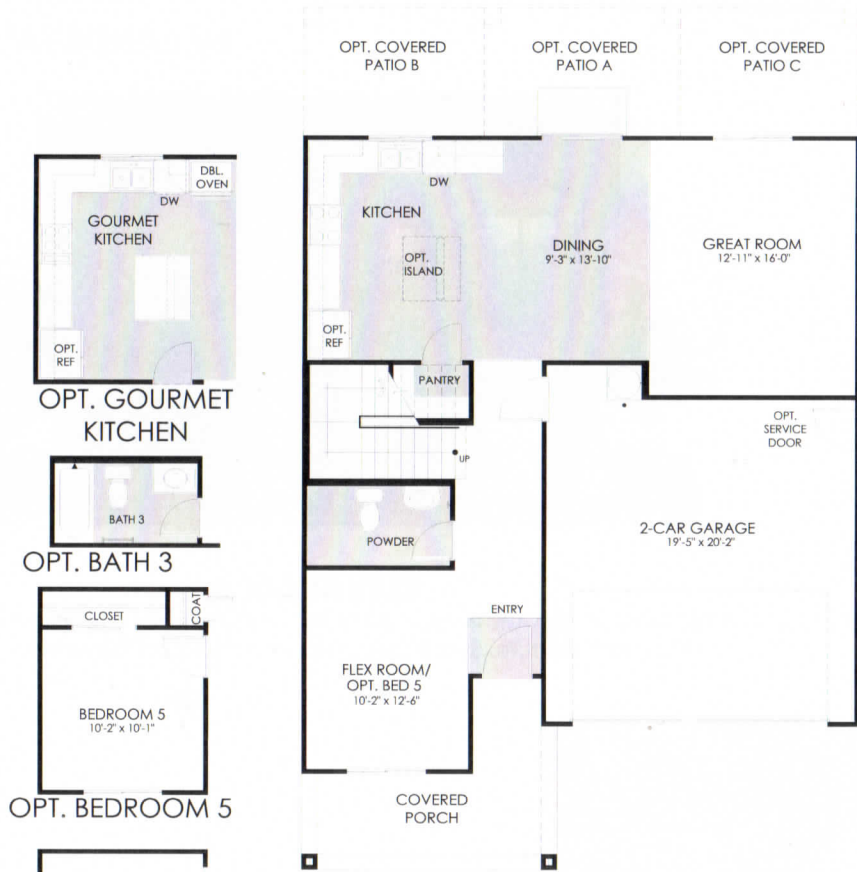
**\*PRELIMINARY\***  
**SUBJECT TO CHANGE**

  
2 STORIES

  
3-5 BEDS

  
2.5-3 BATHS

  
2 BAYS



OPT. GOURMET KITCHEN



OPT. BATH 3

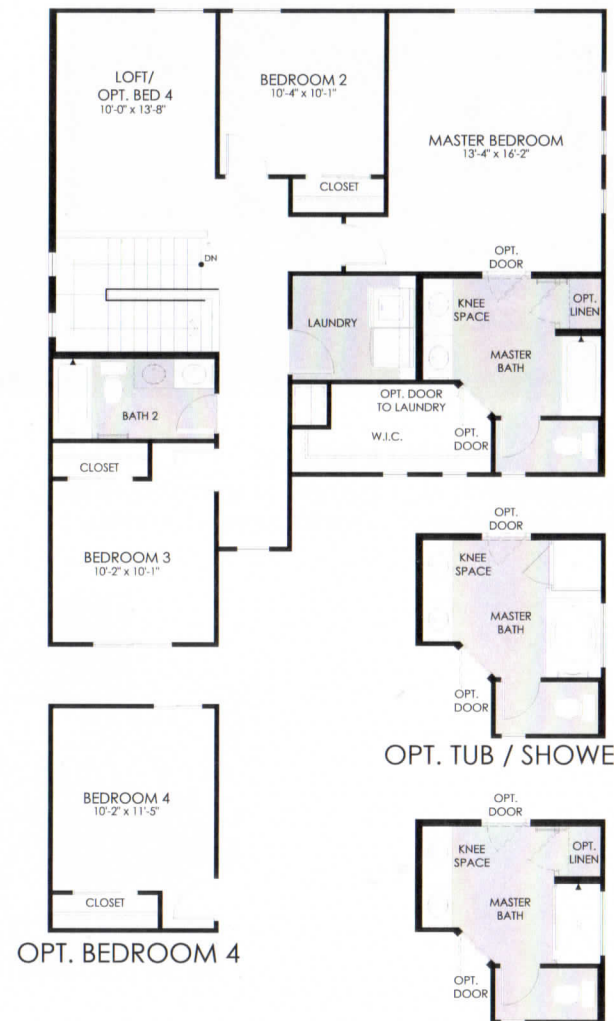


OPT. BEDROOM 5



OPT. DOUBLE DOOR AT FLEX

## UPPER LEVEL



OPT. TUB / SHOWER A

OPT. WALK-IN SHOWER C



All square footages and room dimensions are approximate and are subject to field variation. Any landscaping is shown for illustrative purposes only. Garrett-Walker Homes strives to continually improve our communities and plans, therefore, homes, features, and community information are subject to change without notice or obligation. See Builder Representative for additional details. Constructed By: JJAZ Construction, LLC ROC#275051. Sales By: GW Sales, LLC Broker#BR531160000. 7/12/2019

**SUNDANCE**