

Blue Horizon

Plan 1547



Built on Relationships[®]

Sq. Ft.	1,547
Bedrooms	3
Baths	2
Garage	2



Elevation A



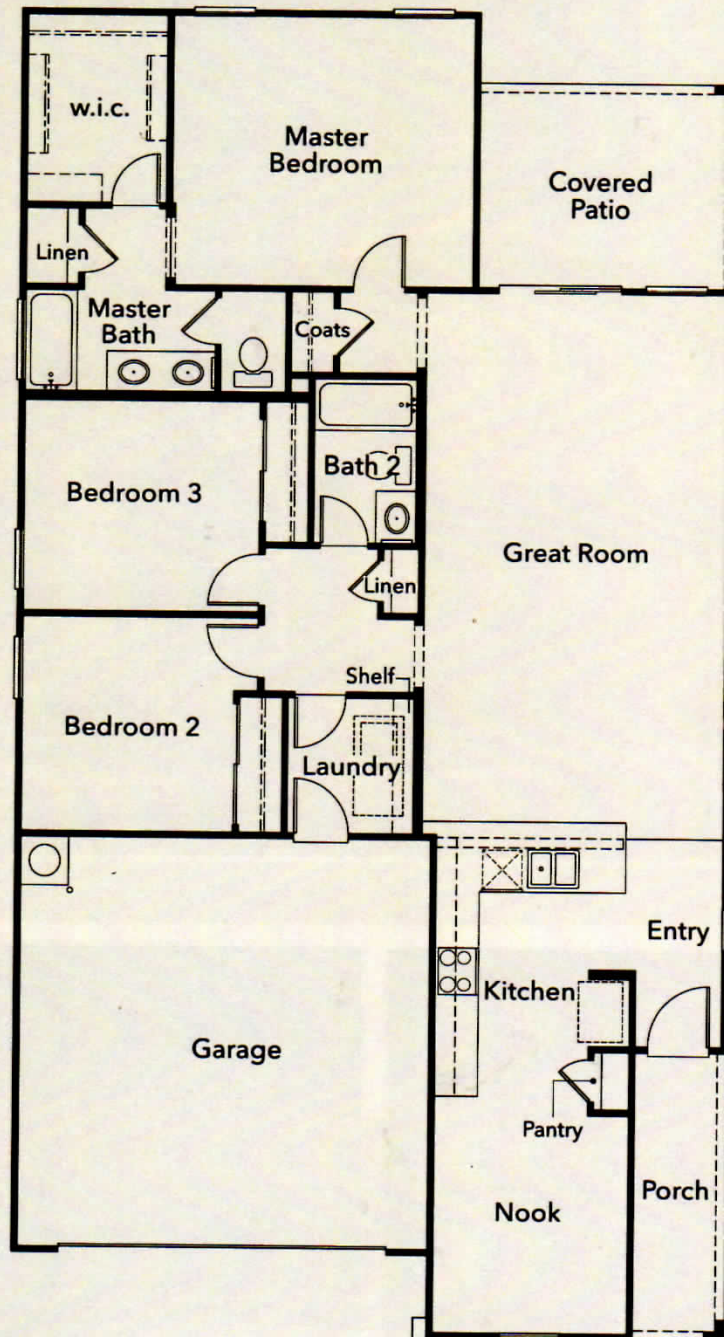
Elevation B



Elevation C

Floor Plan

Preliminary

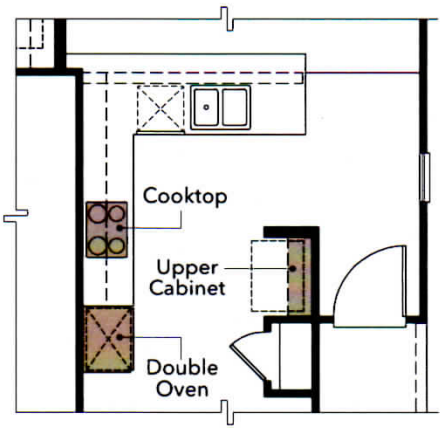
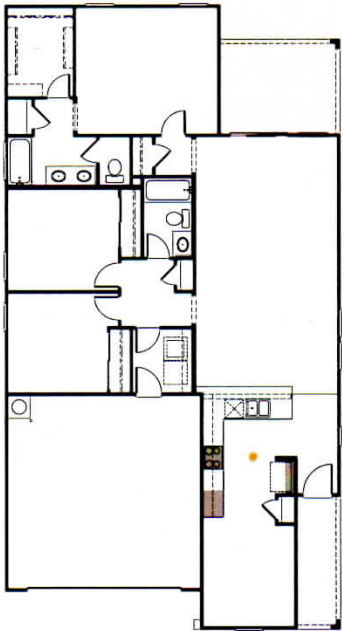


Floor Plan Options

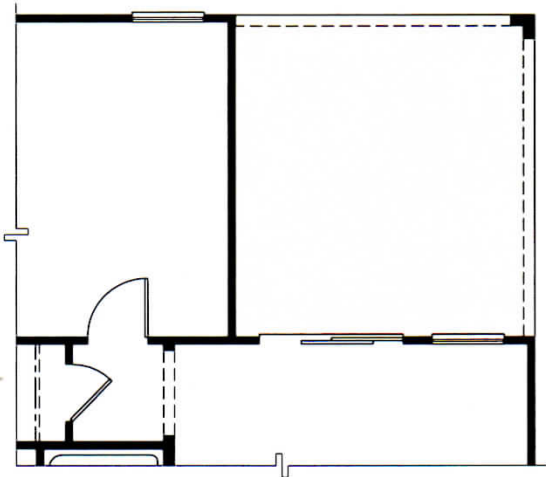
Kitchen	Gourmet Kitchen Cabinet above Refrigerator*
Great Room	Extended Covered Patio Double Doors* 9' Multi-slide Door
Master Bedroom	Sliding Glass Door Double Doors*
Master Bath	Shower in lieu of Tub Garden Tub Super Master Bath Door
Bath 2	Shower in lieu of Tub
Laundry	Upper Cabinets*
Garage	Service Door*

* Option not depicted graphically.
 ** Option not available on every lot. See your sales counselor.
 Explore our fully interactive floor plans online at kbhome.com.

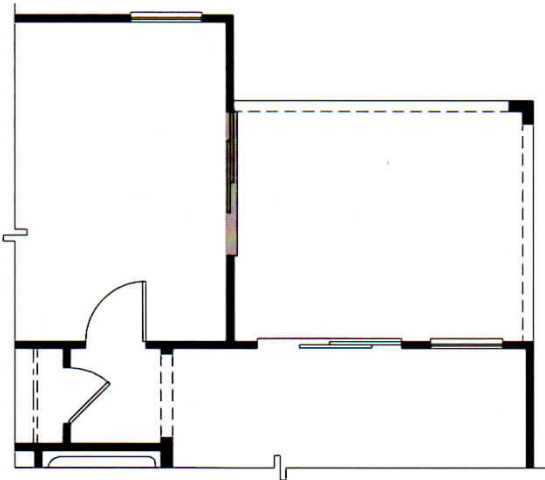
Preliminary



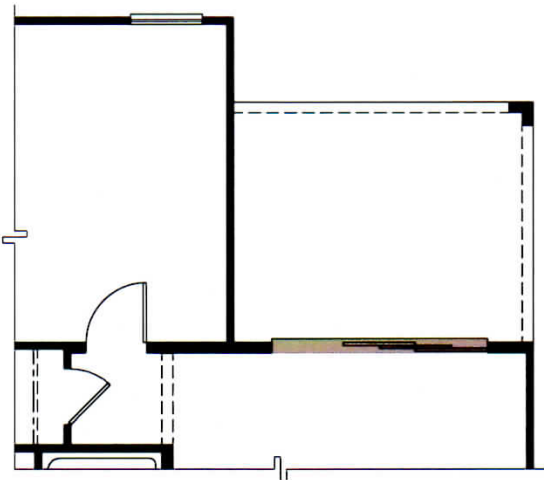
Gourmet Kitchen



Extended Covered Patio



Sliding Glass Door at Master Bedroom

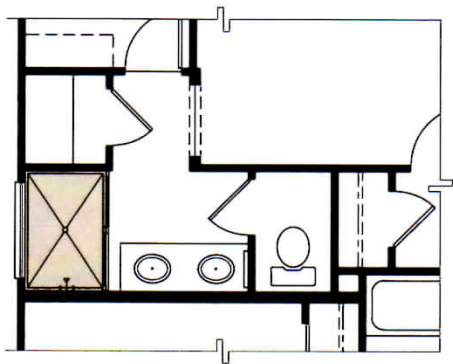


9' Multi-slide Door at Great Room

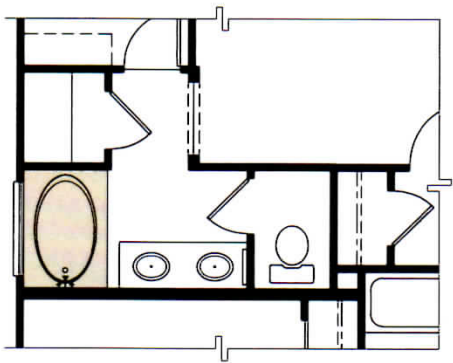
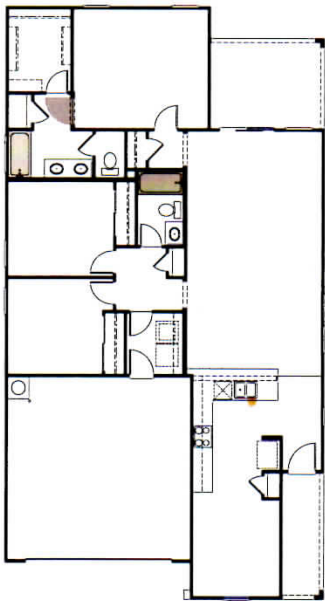
Floor Plan Options

Plan 1547

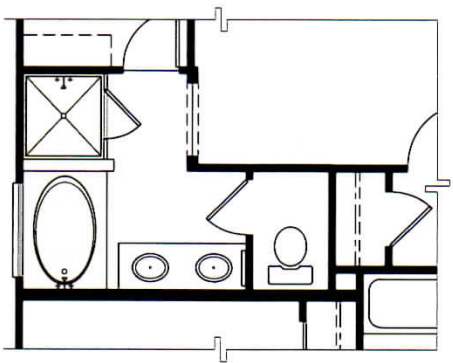
Preliminary



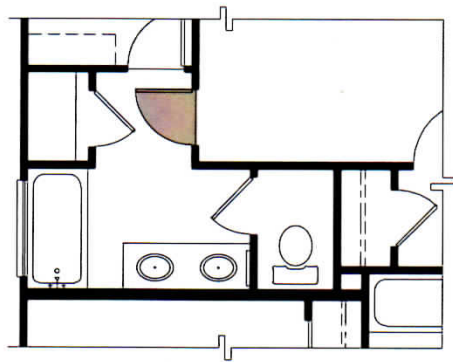
Shower in lieu of Tub at Master Bath



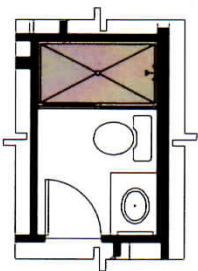
Garden Tub at Master Bath



Super Master Bath



Door at Master Bath



Shower in lieu of Tub at Bath 2



ENERGY PERFORMANCE GUIDE®

Blue Horizon Traditions

Plan 1547



ESTIMATED MONTHLY ENERGY
COST OF A TYPICAL, SIMILARLY
SIZED, **RESALE HOME**

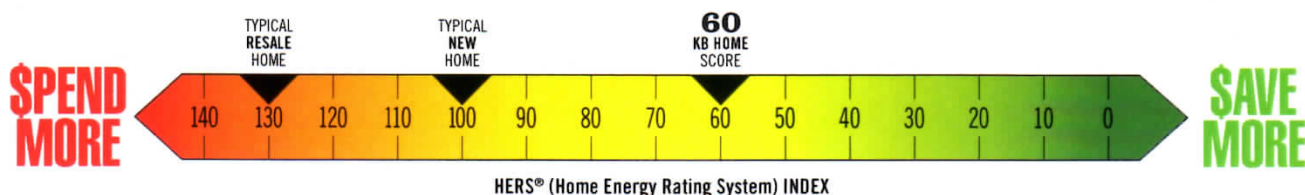
\$216

Actual energy consumption and costs will vary.

ESTIMATED MONTHLY ENERGY
COST OF THIS ENERGY STAR®
CERTIFIED **KB HOME**

\$127

Actual energy consumption and costs will vary.



ESTIMATED ANNUAL SAVINGS = \$1,068*

©2019 KB Home. The HERS® Index is a registered trademark of the Residential Energy Services Network (RESNET). KB Home is not affiliated with RESNET or its service providers, or with any energy efficiency rating organization or related system or service provider, software program, or rater. The HERS Index score and the estimated energy costs and savings shown for this KB home plan and the typical resale home are determined using RESNET-approved computer software and RESNET factors and assumptions as to typical residential energy use and the standard features of this KB home plan as designed and of a typical resale home of similar overall square footage (without accounting for layout or household size), as assumed by the RESNET software. Each is based on the heating and cooling systems, appliances and lighting that are included as standard items with this KB home plan and the typical resale home (as assumed by the RESNET software), and average local energy utility rates available at the time of determination. The estimated energy costs and savings shown do not include or take into account any applicable local, state or federal taxes and/or regulatory or energy utility provider-imposed fees, tariffs or charges. The comparison typical new home shown on the HERS Index is the RESNET U.S. national reference home, which is built to the specifications of the 2006 International Energy Conservation Code. The comparison typical resale home shown on the HERS Index marks the energy efficiency of the existing U.S. housing stock compared to the RESNET U.S. national reference home, as set by the U.S. Department of Energy. KB Home does not warrant or guarantee that a HERS Index score for an as-built home will be equal to or lower than the home's as-designed score as shown for this KB home plan, or that any level of energy costs or savings (if any) will be achieved or maintained, even if a home is built as designed per this KB home plan. **Actual energy costs and savings (if any) for any built home will vary over time, and may vary substantially, based on a number of factors and variables. Important information about the HERS Index and the estimated energy costs and savings figures shown for this KB home plan is available online at <https://www.kbhome.com/energy-efficient-homes> and at KB Home community sales offices. (rev. 04/19)

Phoenix_Blue Horizon Traditions_1547