

# Blue Horizon

Plan 1849



Built on Relationships<sup>®</sup>

Sq. Ft.	1,849
Bedrooms	3-4
Baths	2
Garage	2



Elevation A



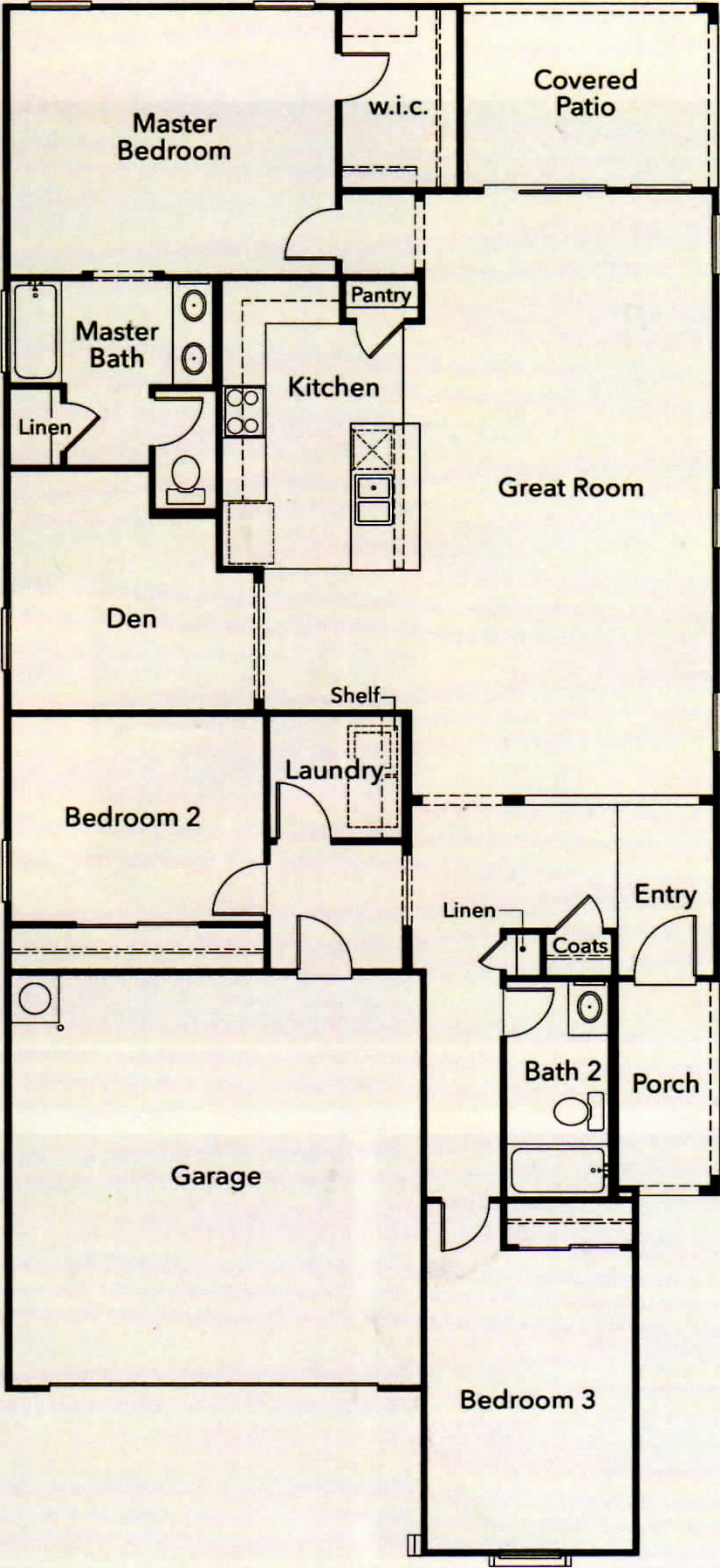
Elevation B



Elevation C

# Floor Plan

Preliminary

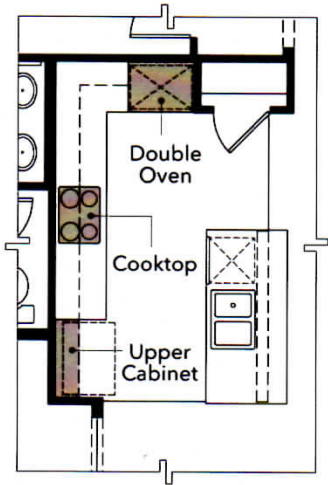
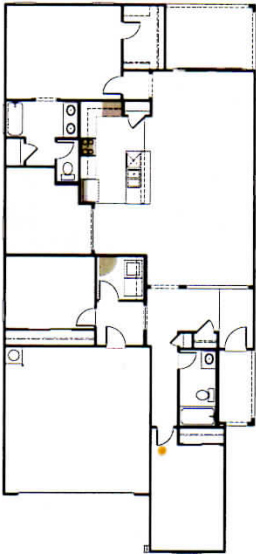




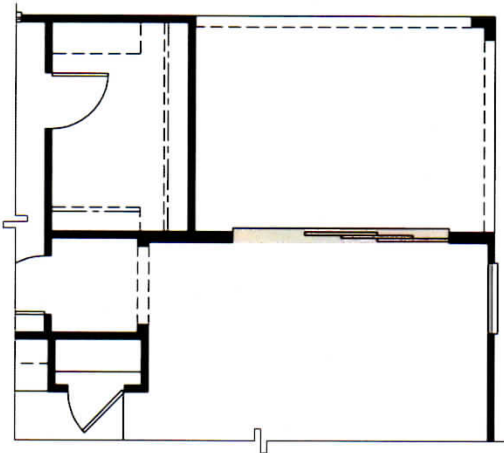
# Floor Plan Options

Kitchen	Gourmet Kitchen Cabinet above Refrigerator*
Great Room	Double Doors* 9' Multi-slide Door
Den	Double Doors* Bedroom 4
Master Bath	Door Shower in lieu of Tub Garden Tub Super Master Bath Medicine Cabinet*
Bath 2	Shower in lieu of Tub Extended Vanity with Knee Space Extended Vanity with Dual Sinks
Laundry	Upper Cabinets* Door
Garage	Service Door*

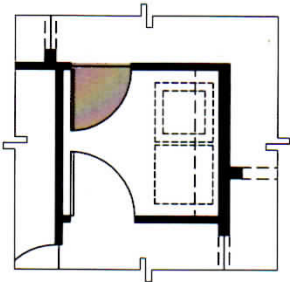
\* Option not depicted graphically.  
 \*\* Option not available on every lot. See your sales counselor.  
 Explore our fully interactive floor plans online at [kbhome.com](http://kbhome.com).



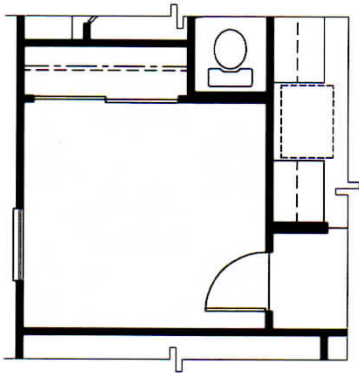
Gourmet Kitchen



9' Multi-slide Door at Great Room



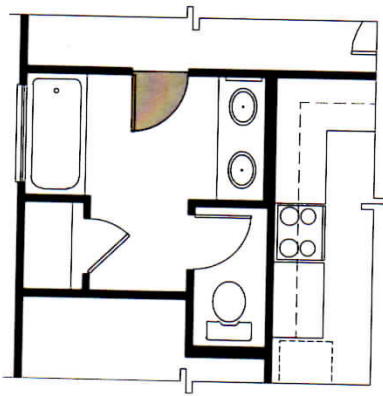
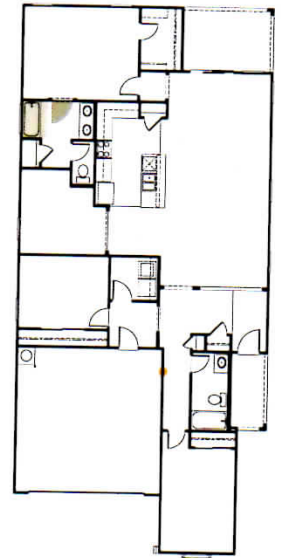
Door at Laundry



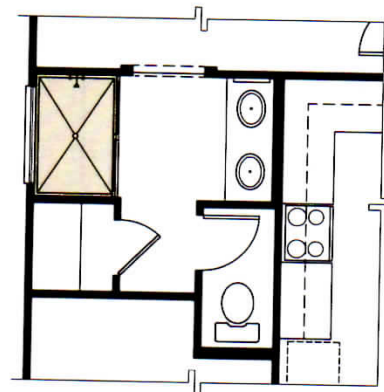
Bedroom 4 at Den

# Floor Plan Options

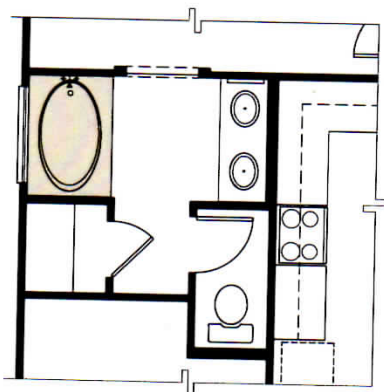
Plan 1849



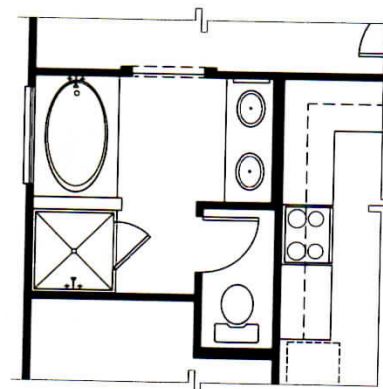
**Door at Master Bath**



**Shower in lieu of Tub at Master Bath**



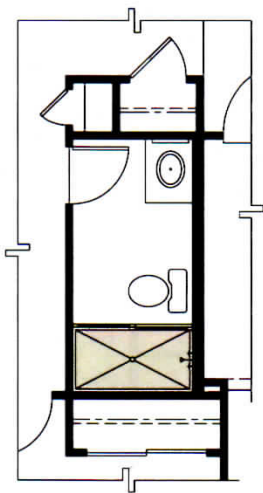
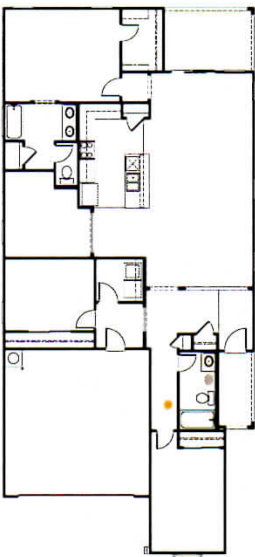
**Garden Tub at Master Bath**



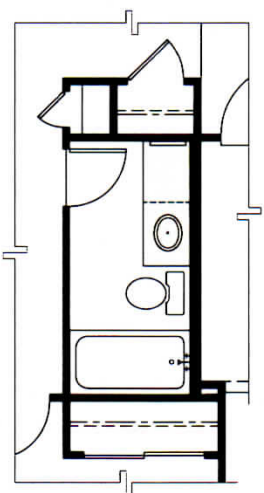
**Super Master Bath**

# Floor Plan Options

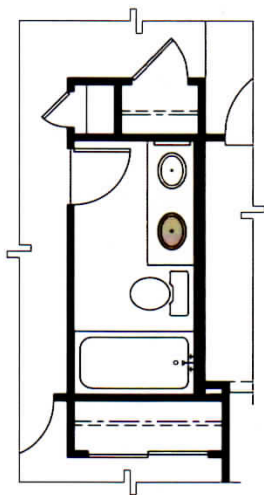
Plan 1849



Shower in lieu of Tub at Bath 2



Extended Vanity with Knee Space at Bath 2



Extended Vanity with Dual Sinks at Bath 2





# ENERGY PERFORMANCE GUIDE®

## Blue Horizon Traditions Plan 1849



ESTIMATED MONTHLY ENERGY  
COST OF A TYPICAL, SIMILARLY  
SIZED, RESALE HOME

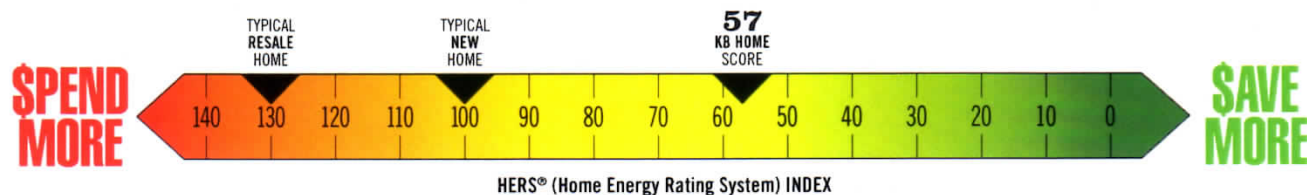
**\$251**

Actual energy consumption and costs will vary.

ESTIMATED MONTHLY ENERGY  
COST OF THIS ENERGY STAR®  
CERTIFIED KB HOME

**\$144**

Actual energy consumption and costs will vary.



**ESTIMATED ANNUAL SAVINGS = \$1,284\***

©2019 KB Home. The HERS® Index is a registered trademark of the Residential Energy Services Network (RESNET). KB Home is not affiliated with RESNET or its service providers, or with any energy efficiency rating organization or related system or service provider, software program, or rater. The HERS Index score and the estimated energy costs and savings shown for this KB home plan and the typical resale home are determined using RESNET-approved computer software and RESNET factors and assumptions as to typical residential energy use and the standard features of this KB home plan as designed and of a typical resale home of similar overall square footage (without accounting for layout or household size), as assumed by the RESNET software. Each is based on the heating and cooling systems, appliances and lighting that are included as standard items with this KB home plan and the typical resale home (as assumed by the RESNET software), and average local energy utility rates available at the time of determination. The estimated energy costs and savings shown do not include or take into account any applicable local, state or federal taxes and/or regulatory or energy utility provider-imposed fees, tariffs or charges. The comparison typical new home shown on the HERS Index is the RESNET U.S. national reference home, which is built to the specifications of the 2006 International Energy Conservation Code. The comparison typical resale home shown on the HERS Index marks the energy efficiency of the existing U.S. housing stock compared to the RESNET U.S. national reference home, as set by the U.S. Department of Energy. KB Home does not warrant or guarantee that a HERS Index score for an as-built home will be equal to or lower than the home's as-designed score as shown for this KB home plan, or that any level of energy costs or savings (if any) will be achieved or maintained, even if a home is built as designed per this KB home plan. \*\*Actual energy costs and savings (if any) for any built home will vary over time, and may vary substantially, based on a number of factors and variables. Important information about the HERS Index and the estimated energy costs and savings figures shown for this KB home plan is available online at <https://www.kbhome.com/energy-efficient-homes> and at KB Home community sales offices. (rev. 04/19)

Phoenix\_Blue Horizon Traditions\_1849