

Valencia at Estrella

Kaibab
3,325 Sq. Ft.



Elevation A



Elevation B



Elevation C

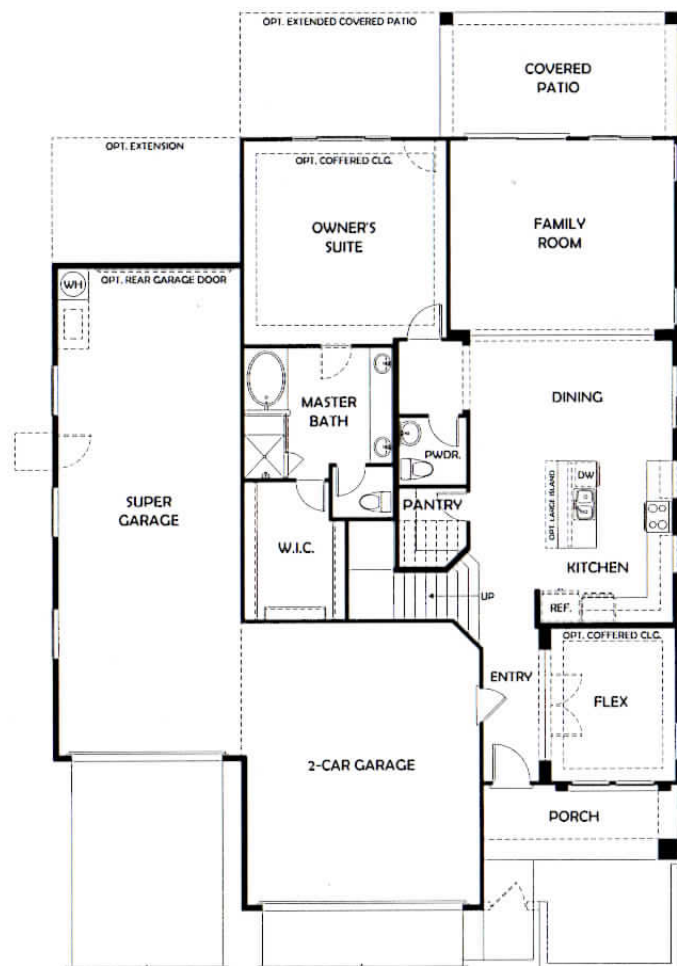


www.courtlandcommunities.com

PRELIMINARY



OPT. WALK-IN SHOWER
AT MASTER BATH



The floor plan for the second floor includes the following areas:

- BEDROOM 2**: Located in the top left corner.
- W.I.C.**: A walk-in closet located between Bedroom 2 and Bedroom 3.
- BEDROOM 3**: Located in the top right corner.
- BATH 2**: A bathroom located in the center, containing a bathtub, toilet, and sink.
- W.I.C.**: A walk-in closet located to the left of Bath 2.
- LAUNDRY**: A laundry room located to the left of Bath 2, containing a washing machine and dryer.
- STAIRS**: A set of stairs labeled "DN" (down) located below the laundry room.
- BEDROOM 4**: A large bedroom located on the right side of the floor plan.
- W.I.C.**: A walk-in closet located at the bottom right, adjacent to Bedroom 4.
- GAME ROOM**: A large room located at the bottom of the floor plan.

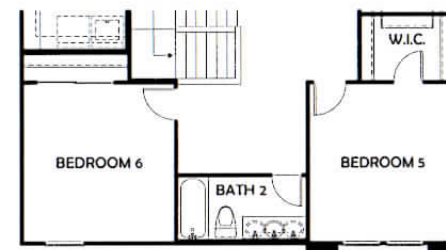
SECOND FLOOR



OPT. JACK AND JILL BATH



OPT. BEDROOM 6 WITH FULL BATH



OPT. BEDROOMS 5 AND 6
WITH FULL BATH



PRELIMINARY

www.courtlandcommunities.com

In an effort to continually improve our plans and also due to the possibility of material shortages, there may be existing or future changes made in the building products, materials, methods or designs used in our homes which are not reflected in our models. Such modifications as well as price changes may be made without notice. Therefore, please consult one of our Sales Executives for the latest information. Location, size, and existence of doors, windows, walls, and any other item depicted may vary depending on exterior preference or choice of options. Prices, plans, benefits, incentives and locations are subject to change without notice. Complete plans are available for inspection upon request. ROC#272575