

# THE MOONSTONE

Approx. 2,630 sq. ft. | 2 stories | 4-6 bedrooms | 2-car garage | Plan #P914



ELEVATION C

## ABOUT THE MOONSTONE

Spacious and accommodating, the two-story Moonstone plan features an open-concept main floor and four charming bedrooms upstairs. Just off the entryway, you'll find a secluded study with a nearby powder room. Toward the back of the home, a great room flows into an inviting kitchen with a center island and adjacent dining room. Upstairs, a loft offers a versatile common area, and a sprawling master suite includes an attached bath and walk-in closet. If desired, opt for additional bedrooms in lieu of the study or loft. Covered patio is also included!

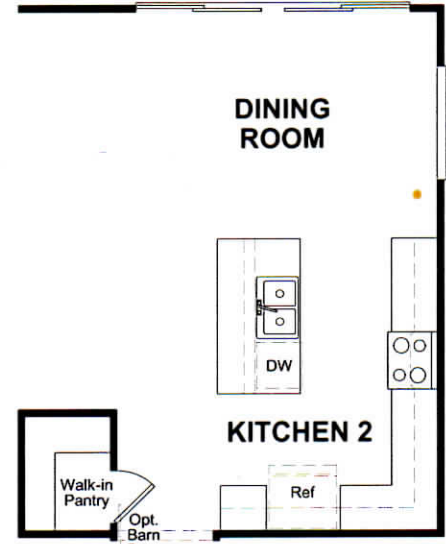
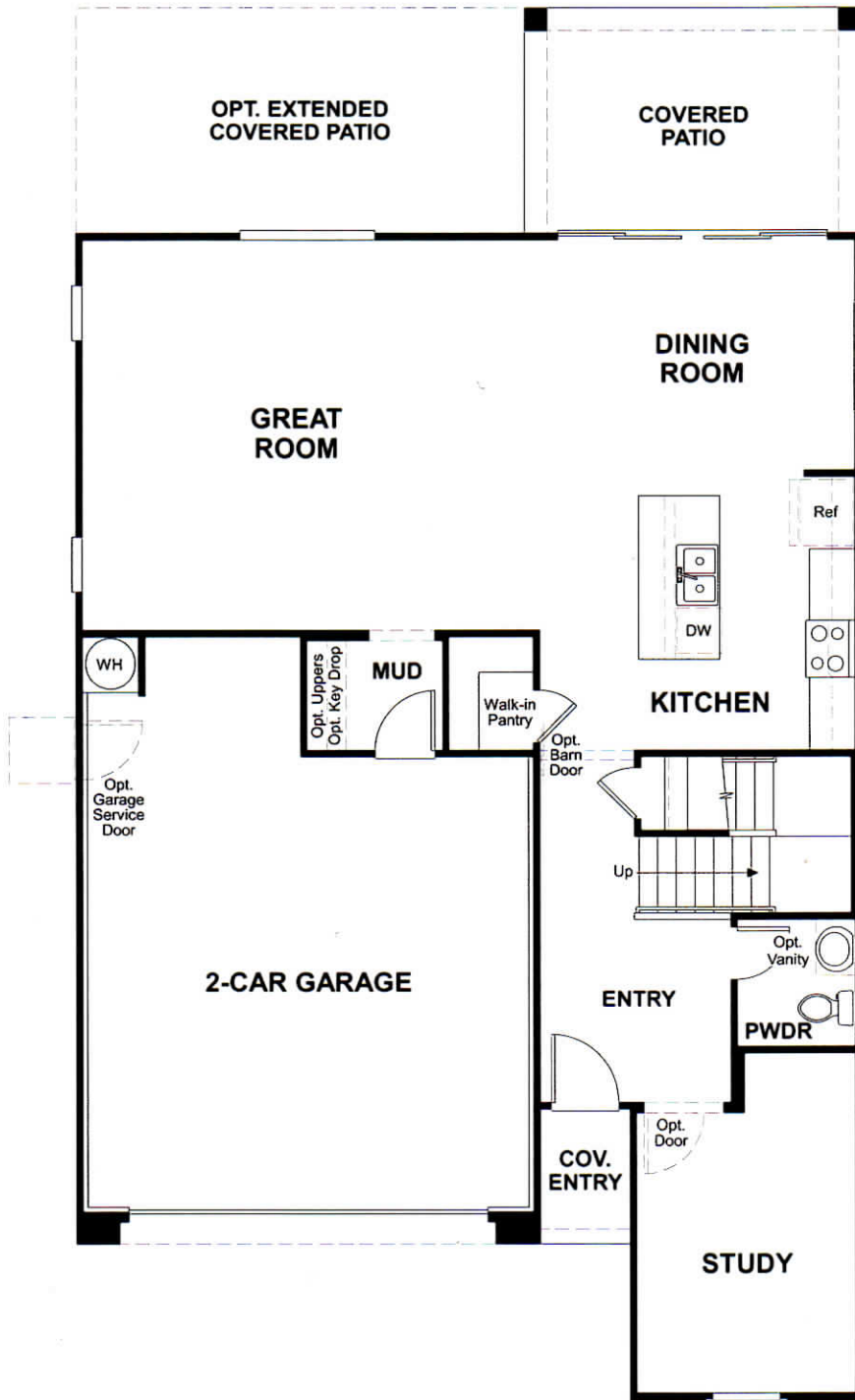


ELEVATION A

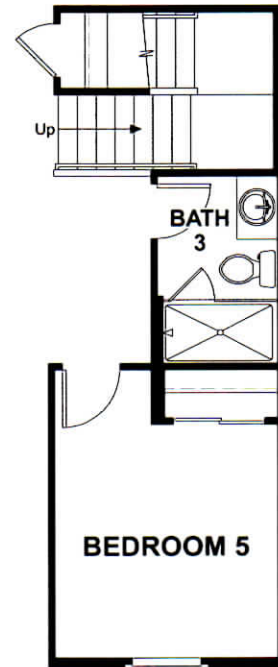


ELEVATION B

MAIN FLOOR



OPT. KITCHEN #2

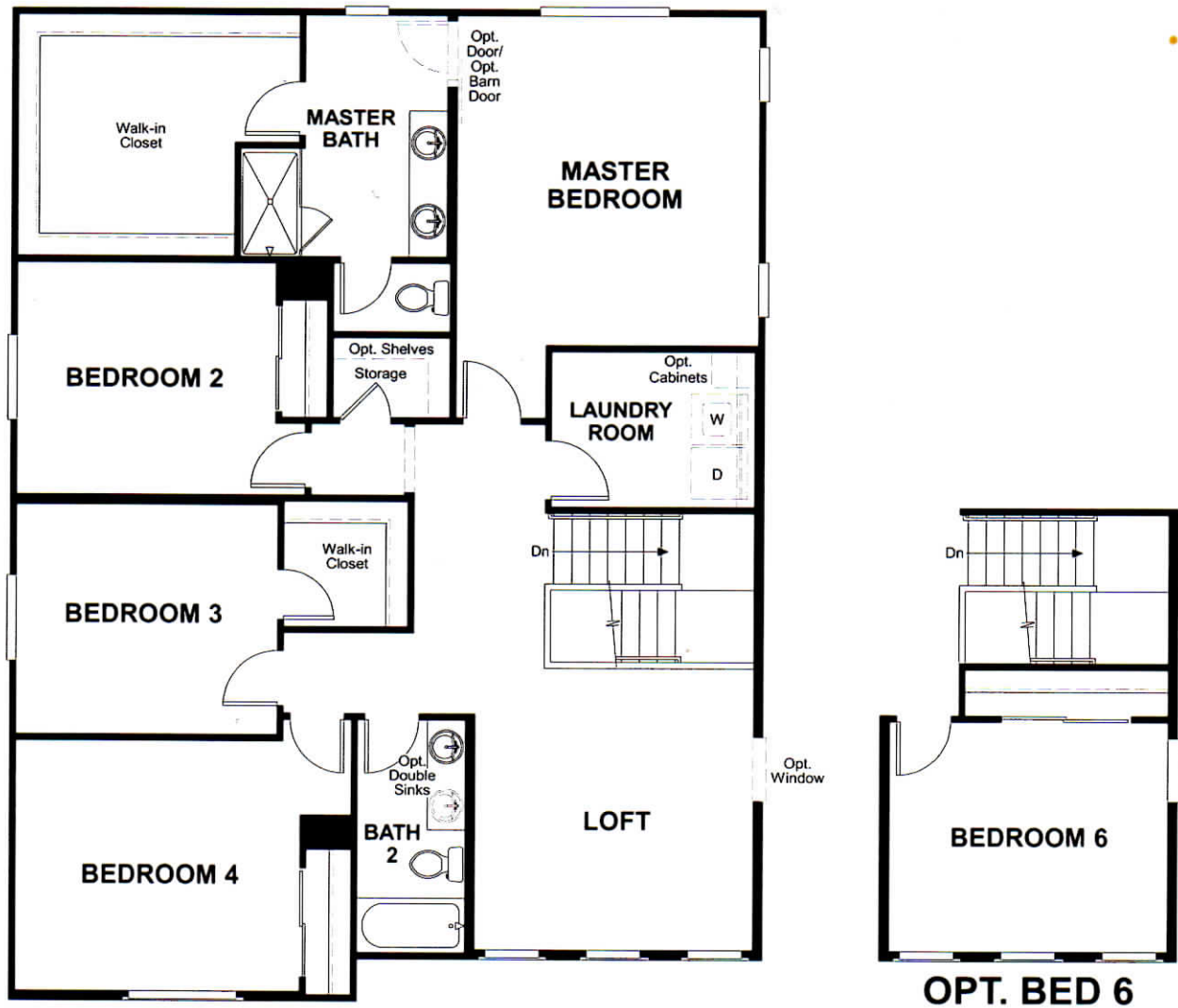


OPT. BED 5/  
BATH 3

THIS PLAN'S PROJECTED  
**HERS® INDEX = 61\***  
Projected Rating Based on Plans – Field Confirmation required

How does this floor plan rate?  
Take a look: 100 = Standard new home+ 130 = Typical resale Home\*\*  
The lower number, the better! Refer to the RESNET® HERS index brochure or  
go to [www.RESNET.us](http://www.RESNET.us) and [www.HERSindex.com](http://www.HERSindex.com)

SECOND FLOOR



**What's a HERS® Index?** HERS stands for Home Energy Rating System, a system created by RESNET® to measure home energy efficiency.<sup>^</sup> A Projected HERS index or rating is a computer simulation performed prior to construction by a third-party HERS rater using RESNET accredited rating software, rated feature and specification data derived from home plans, features and specifications, and other data selected or assumed by the rater. The projected HERS index is approximate and is subject to change without notice. Actual results will vary.