

THE LARIMAR

Approx. 1,810 sq. ft. | 1 story | 4 bedrooms | 2- to 3-car garage | Plan #P917



ELEVATION C

ABOUT THE LARIMAR

The ranch-style Larimar plan offers a seamless blend of style, comfort and functionality. The heart of this home is its open, airy kitchen, which features a center island, walk-in pantry and dining room, and flows into an inviting great room with an adjacent covered patio. The large master suite boasts a well-appointed bath with an oversized walk-in closet, and three additional bedrooms provide ample space for rest and relaxation. Personalization options include a private study, third bathroom and more!

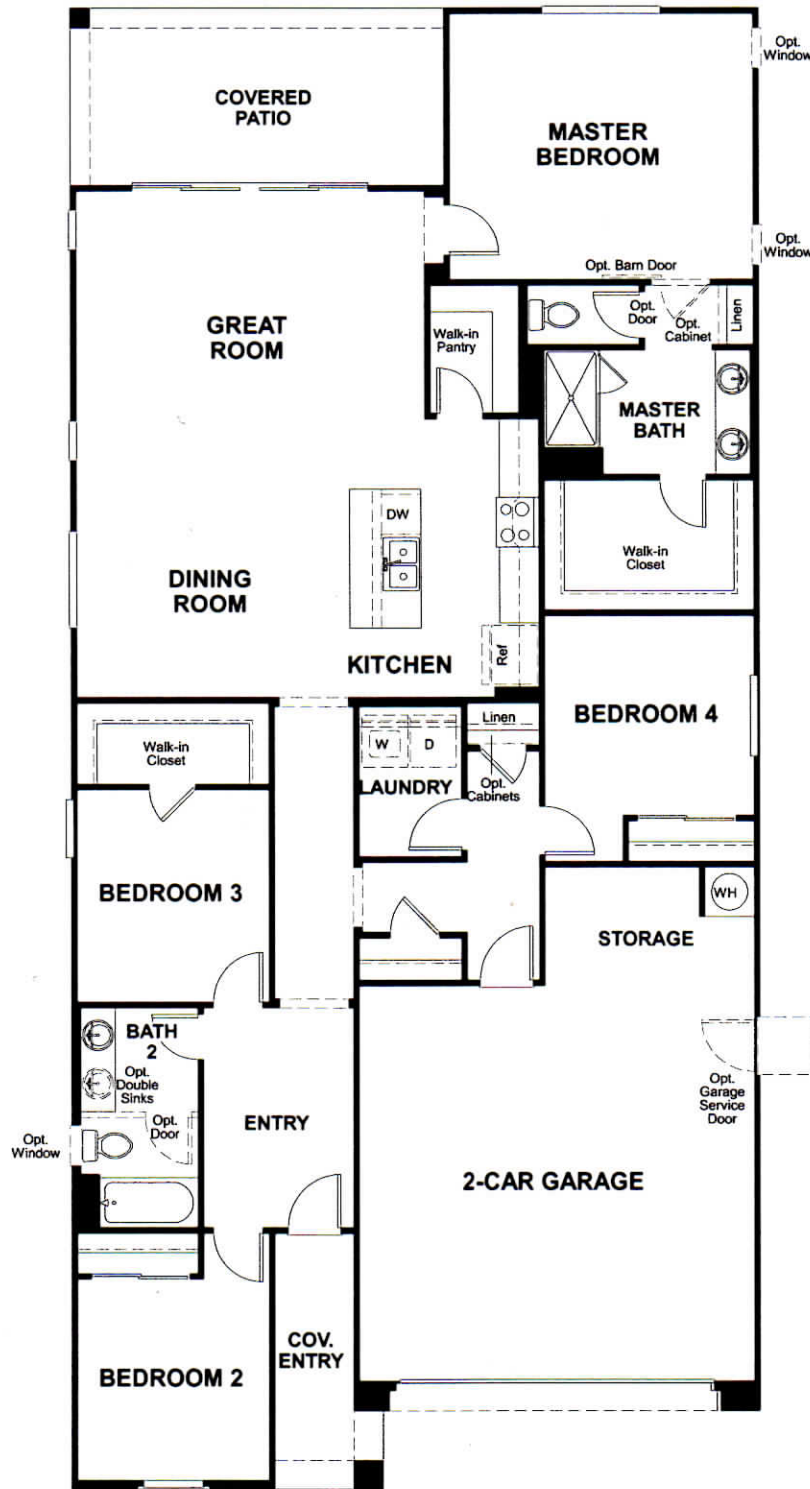


ELEVATION A



ELEVATION B

MAIN FLOOR



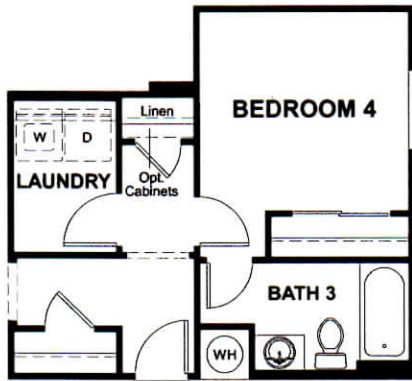
THIS PLAN'S PROJECTED
HERS® INDEX = 65*

Projected Rating Based on Plans – Field Confirmation required

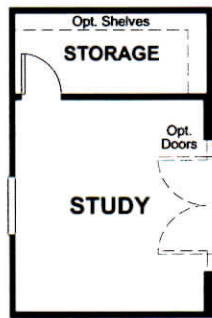
How does this floor plan rate?

Take a look: **100** = Standard new home* **130** = Typical resale Home**
 The lower number, the better! Refer to the RESNET® HERS index brochure or go to www.RESNET.us and www.HERSindex.com

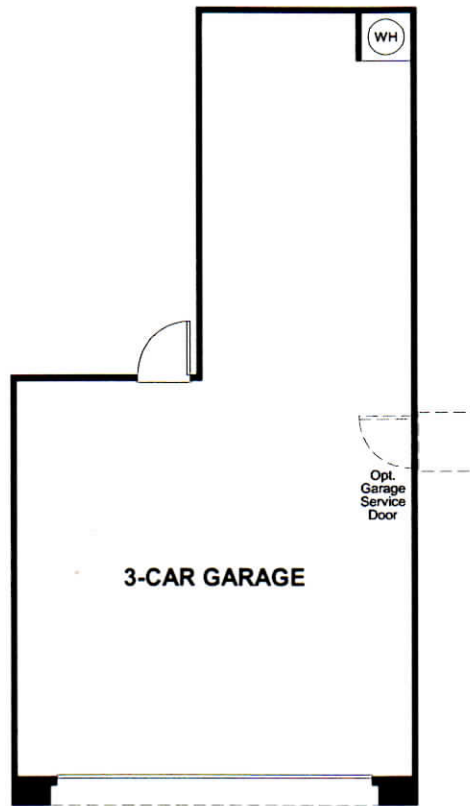
MAIN FLOOR OPTIONS



OPT. BATH 3 AT BEDROOM 4



OPT. STUDY



OPT. TANDEM GARAGE

What's a HERS® Index? HERS stands for Home Energy Rating System, a system created by RESNET® to measure home energy efficiency. A Projected HERS index or rating is a computer simulation performed prior to construction by a third-party HERS rater using RESNET-accredited rating software, rated feature and specification data derived from home plans, features and specifications, and other data selected or assumed by the rater. The projected HERS index is approximate and is subject to change without notice. Actual results will vary.