

THE SUNSTONE

Approx. 1,860 sq. ft. | 1 story | 4-5 bedrooms | 2-car garage | Plan #P919



ELEVATION C

ABOUT THE SUNSTONE

Everything's just where you need it in this charming ranch-style floor plan. As you enter, you'll find an elegant study just off the entryway. Beyond the entry, an inviting kitchen with a walk-in pantry and generous eat-in island flows into a charming dining room—and beyond that, the great room. From the great room, you'll enjoy a stylish sliding-glass door that provide access to a relaxing covered patio. This floor plan also includes four bedrooms, with an optional fifth bedroom in lieu of the study. Conversely, select bedrooms are available as a teen room or additional garage space. Completing the floor plan, a beautiful master suite boasts two walk-in closets—one of which can be converted into a tech center—and a private bath with double sinks.

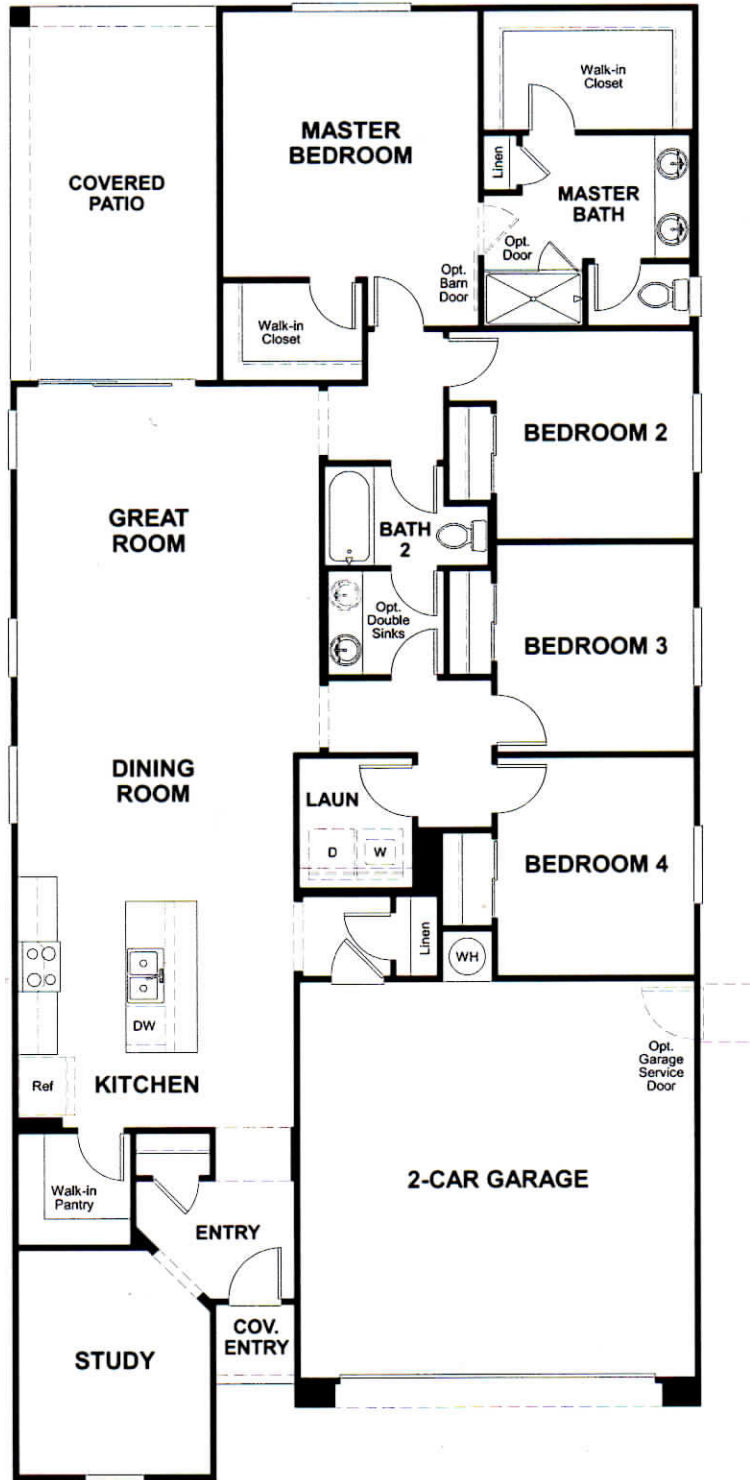


ELEVATION A



ELEVATION B

MAIN FLOOR



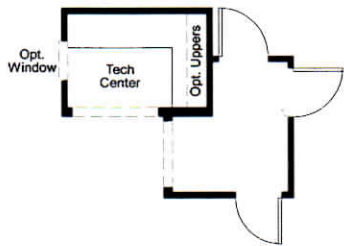
THIS PLAN'S PROJECTED
HERS® INDEX = 64*

Projected Rating Based on Plans – Field Confirmation required

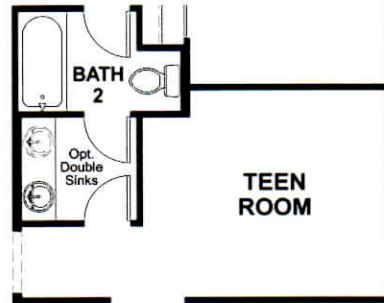
How does this floor plan rate?

Take a look: **100** = Standard new home+ **130** = Typical resale Home++
 The lower number, the better! Refer to the RESNET® HERS index brochure or go to www.RESNET.us and www.HERSindex.com

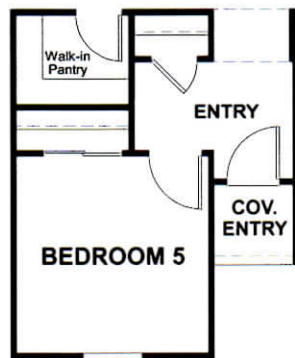
MAIN FLOOR OPTIONS



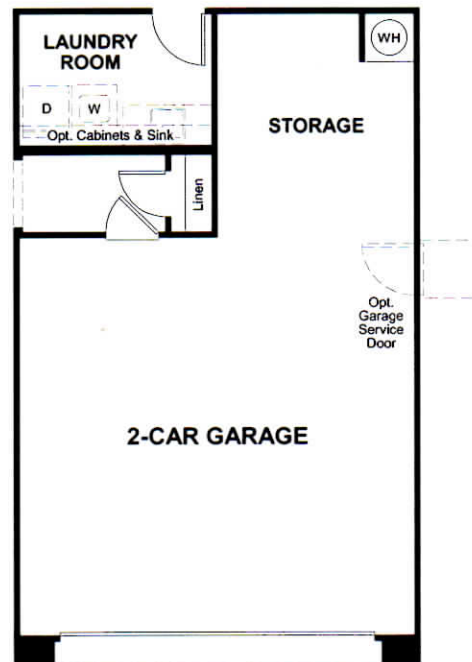
OPT. TECH CENTER



OPT. TEEN ROOM



OPT. BEDROOM 5



OPT. GARAGE STORAGE

What's a HERS® Index? HERS stands for Home Energy Rating System, a system created by RESNET® to measure home energy efficiency. A Projected HERS index or rating is a computer simulation performed prior to construction by a third-party HERS rater using RESNET-accredited rating software, rated feature and specification data derived from home plans, features and specifications, and other data selected or assumed by the rater. The projected HERS index is approximate and is subject to change without notice. Actual results will vary.