

# JOSLIN

40' SINGLE FAMILY HOMES



SPANISH



CONTEMPORARY



CRAFTSMAN

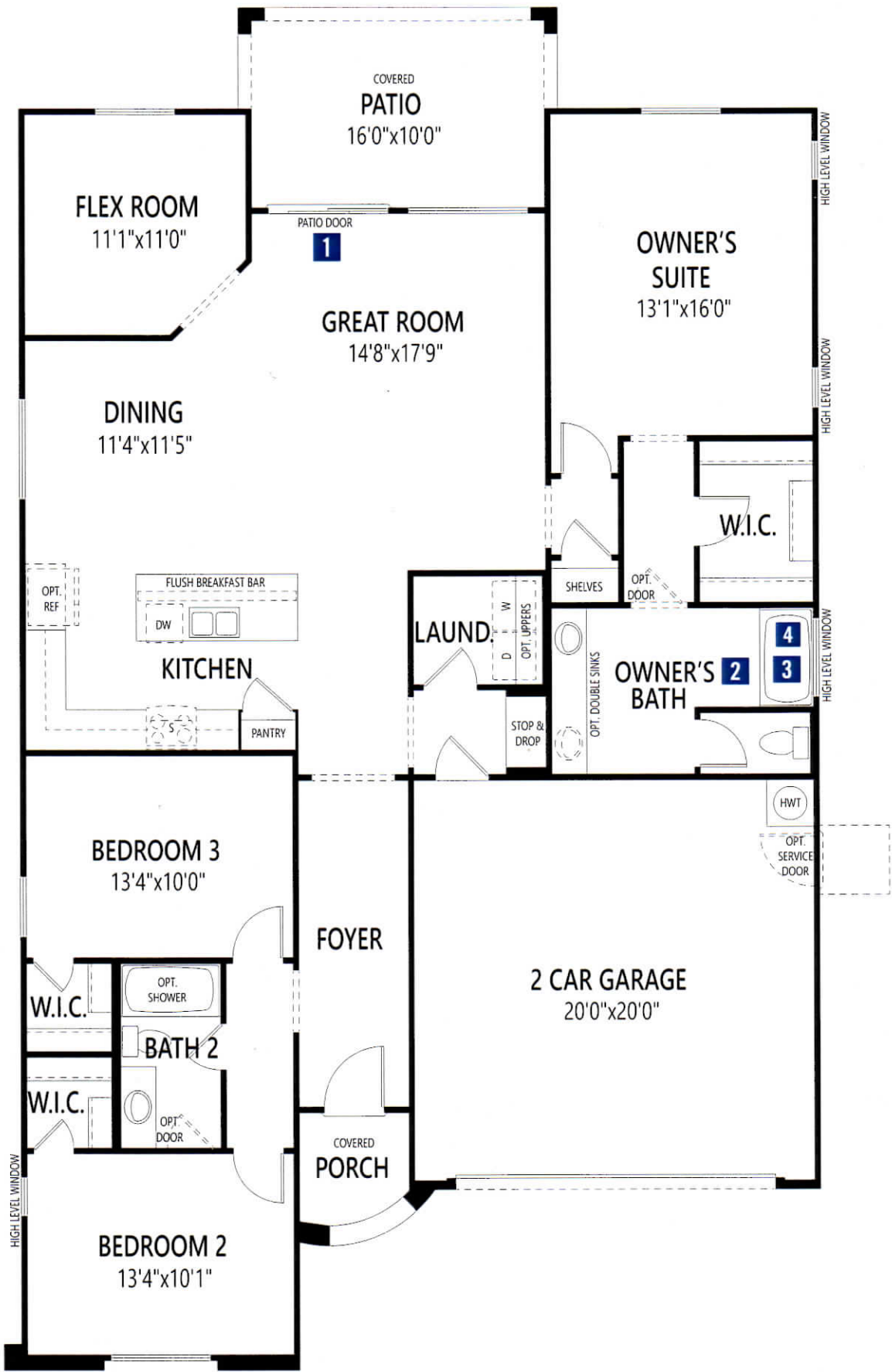
**1,768** SQ.FT.

3 BEDROOM • 2 BATHROOM • 2 CAR GARAGE • 1 STORY



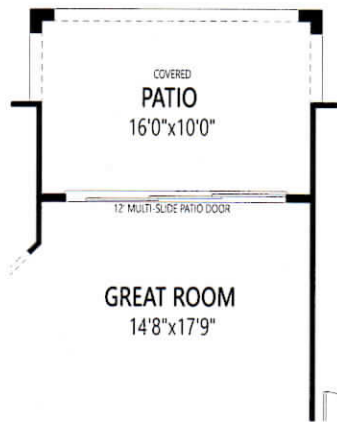
**SOLANO**  
AT SIENNA HILLS

**mattamy**HOMES



# ARCHITECT'S CHOICE OPTIONS

## 1 12' MULTI-SLIDING GLASS DOOR



## 2 BATH OASIS



## 3 WALK-IN SHOWER



## 4 GARDEN TUB IN LIEU OF TUB/SHOWER COMBO

