

Elevation A



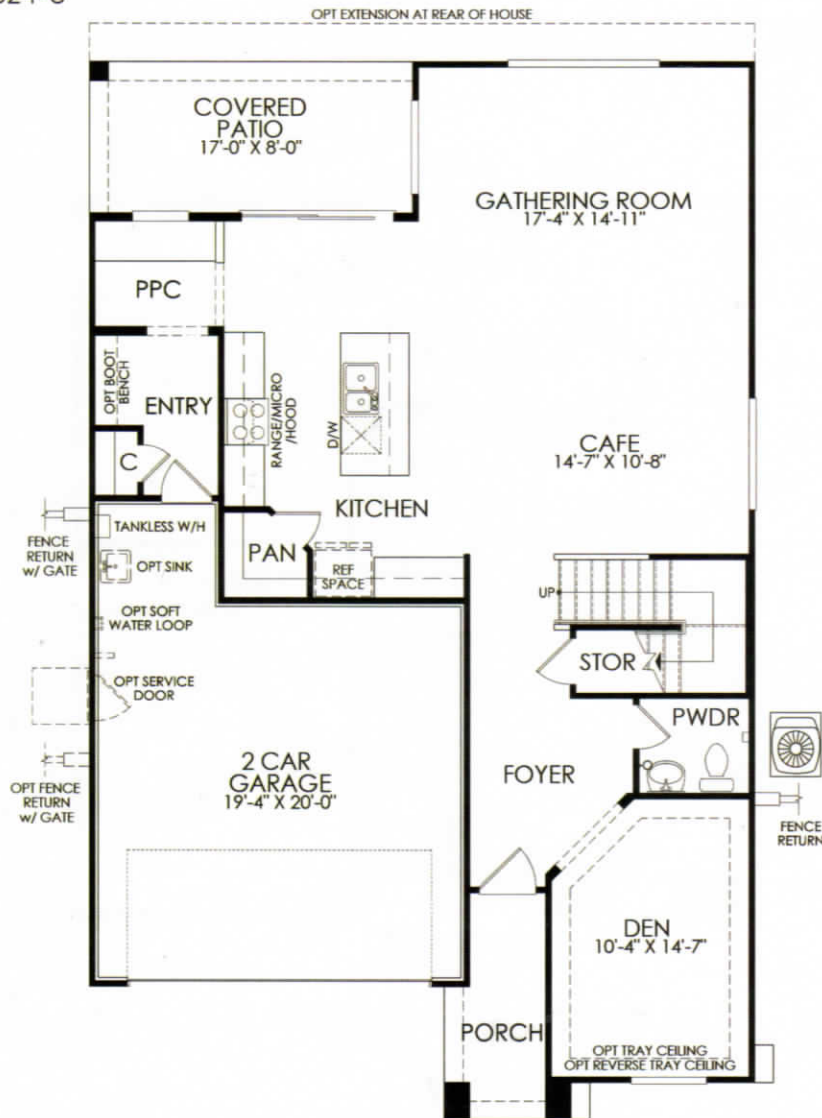
Elevation B



Elevation C with Stone

Fifth Avenue 3524-6

2,446 Sq. Ft.

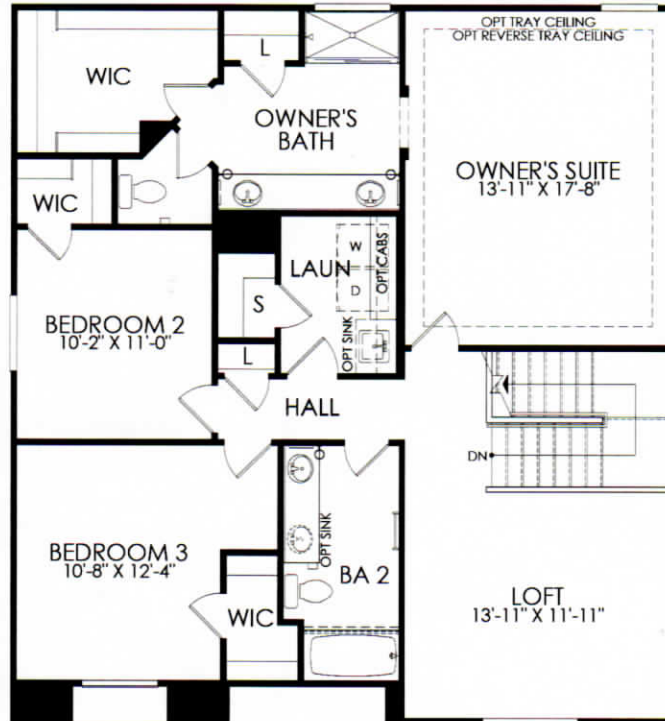


First Floor

Dimensions shown are approximate. Location, size, and construction of doors, windows, walls, fireplaces and any other items depicted may vary depending on elevation preference or choice of options and are subject to change without notice. Owing to normal construction tolerances, the room sizes may vary. Please ask a sales consultant for more details.

Pulte Homes Corporation reserves the right to modify home design, materials, features, methods of construction, and price without notice or obligation. Due to normal construction tolerances, square footage may vary from those shown on the floorplans. Floorplan and elevation illustrations are artists' conception and are not intended to show specific detailing. Sales are conditioned upon buyers' acceptance and receipt of the Arizona Subdivision Public Report. ROC.#079383 2/18

Fifth Avenue 3524-6
2,446 Sq. Ft.



Second Floor

Dimensions shown are approximate. Location, size, and construction of doors, windows, walls, fireplaces and any other items depicted may vary depending on elevation preference or choice of options and are subject to change without notice. Owing to normal construction tolerances, the room sizes may vary slightly. Please ask a sales consultant for more details.

Pulte Homes Corporation reserves the right to modify home design, materials, features, methods of construction, and price without notice or obligation. Due to normal construction tolerances, square footage may vary from those shown on the floorplans. Floorplan and elevation illustrations are artists' conception and are not intended to show specific detailing. Sales are conditioned upon buyers' acceptance and receipt of the Arizona Subdivision Public Report. ROC #079383 2/18

