

# Terra de Oro

Plan 2016

Sq. Ft.	2,016
Bedrooms	3-4
Baths	2
Garage	2

Preliminary



Built on  
Relationships®



Elevation A

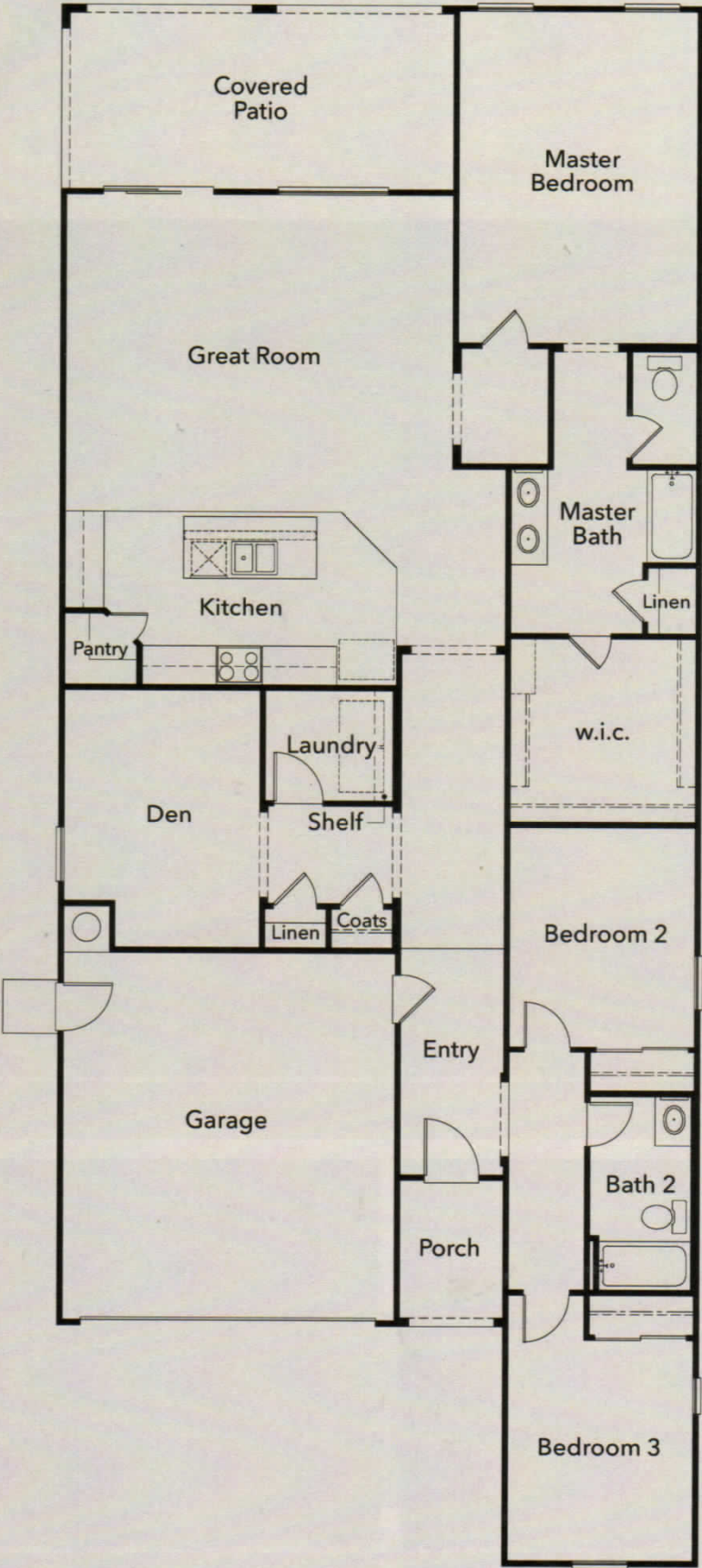


Elevation B



Elevation C

# Floor Plan





# Floor Plan Options

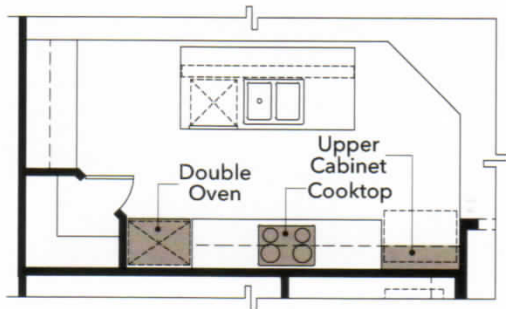
Kitchen	Cabinet Above Refrigerator* Gourmet Kitchen
Great Room	Double Doors* 9' Multi-slide Door 15' Multi-slide Door
Master Bath	Garden Tub Full Shower Super Master Bath Door Extended Vanity Extended Vanity with 2nd Medicine Cabinet*
Bath 2	Full Shower Extended Vanity with Dual Sinks Extended Vanity with Knee Space
Den	Double Doors* Bedroom 4
Laundry	Upper Cabinets*

\* Option not depicted graphically.

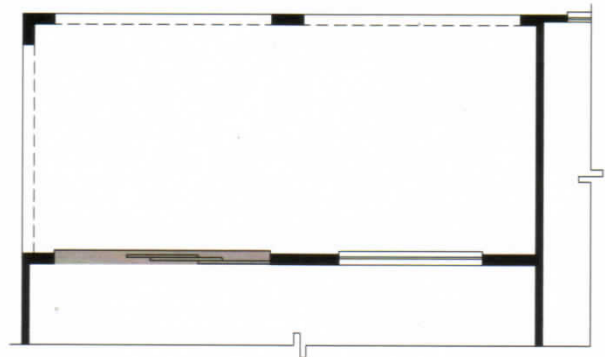
\*\* Option not available on every lot. See your sales counselor.

Explore our fully interactive floor plans online at [kbhome.com](http://kbhome.com).

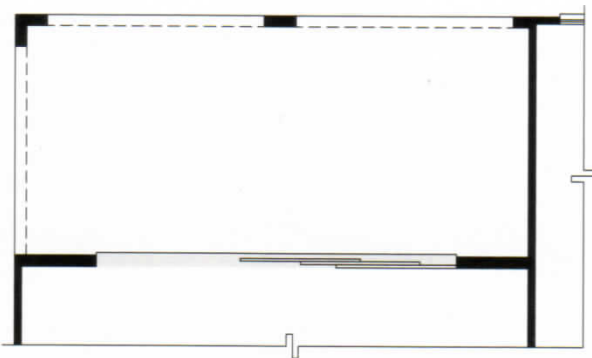
Preliminary



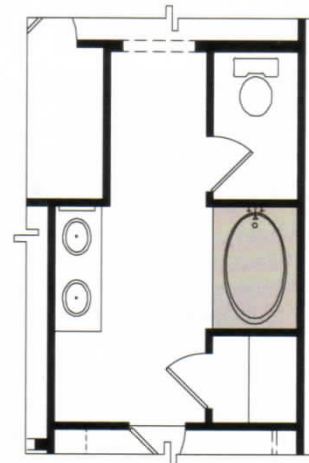
**Gourmet Kitchen**



**9' Multi-slide Door at Great Room**

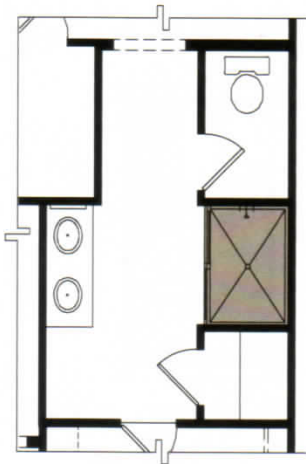


**15' Multi-slide Door at Great Room**

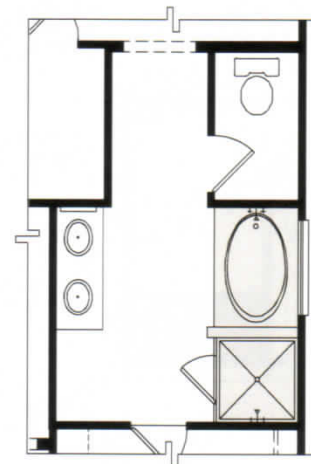


**Garden Tub at Master Bath**

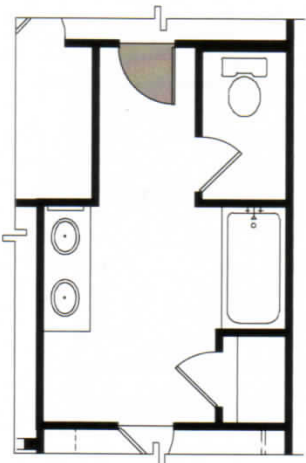
Preliminary



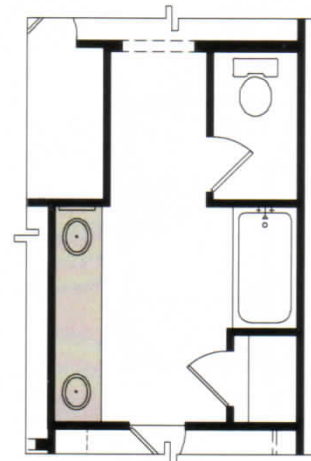
**Full Shower at Master Bath**



**Super Master Bath**

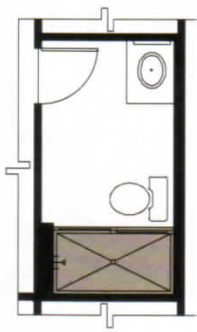


**Door at Master Bath**

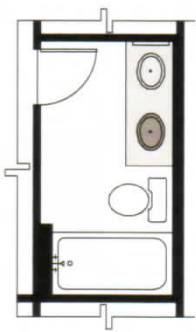


**Extended Vanity at Master Bath**

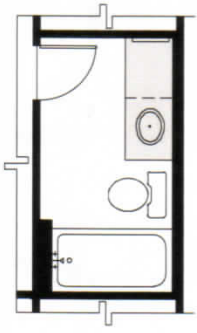
Preliminary



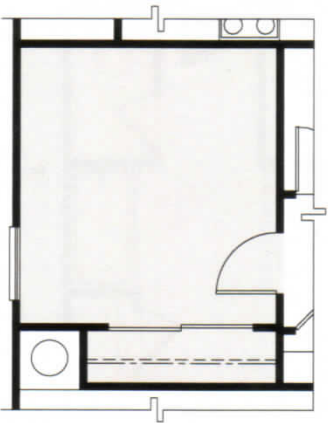
Full Shower at Bath 2



Extended Vanity with Dual Sinks at Bath 2



Extended Vanity with Knee Space at Bath 2



Bedroom 4 at Den



# ENERGY PERFORMANCE GUIDE®

Terra de Oro

## Plan 2016



ESTIMATED MONTHLY ENERGY  
COST OF A TYPICAL, SIMILARLY  
SIZED, RESALE HOME

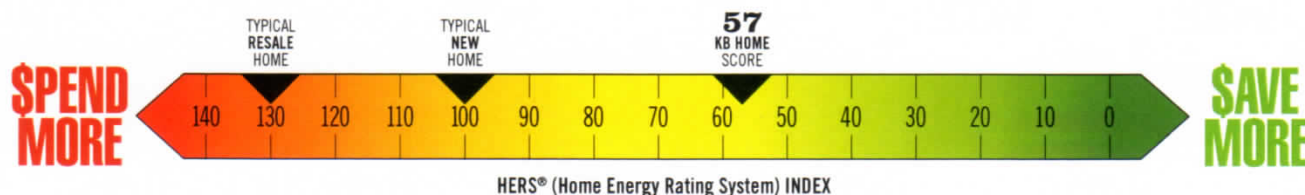
# \$258

Actual energy consumption and costs will vary.

ESTIMATED MONTHLY ENERGY  
COST OF THIS ENERGY STAR®  
CERTIFIED KB HOME

# \$142

Actual energy consumption and costs will vary.



ESTIMATED ANNUAL SAVINGS = \$1,392\*

©2019 KB Home. The HERS® Index is a registered trademark of the Residential Energy Services Network (RESNET). KB Home is not affiliated with RESNET or its service providers, or with any energy efficiency rating organization or related system or service provider, software program, or rater. The HERS Index score and the estimated energy costs and savings shown for this KB home plan and the typical resale home are determined using RESNET-approved computer software and RESNET factors and assumptions as to typical residential energy use and the standard features of this KB home plan as designed and of a typical resale home of similar overall square footage (without accounting for layout or household size), as assumed by the RESNET software. Each is based on the heating and cooling systems, appliances and lighting that are included as standard items with this KB home plan and the typical resale home (as assumed by the RESNET software), and average local energy utility rates available at the time of determination. The estimated energy costs and savings shown do not include or take into account any applicable local, state or federal taxes and/or regulatory or energy utility provider-imposed fees, tariffs or charges. The comparison typical new home shown on the HERS Index is the RESNET U.S. national reference home, which is built to the specifications of the 2006 International Energy Conservation Code. The comparison typical resale home shown on the HERS Index marks the energy efficiency of the existing U.S. housing stock compared to the RESNET U.S. national reference home, as set by the U.S. Department of Energy. KB Home does not warrant or guarantee that a HERS Index score for an as-built home will be equal to or lower than the home's as-designed score as shown for this KB home plan, or that any level of energy costs or savings (if any) will be achieved or maintained, even if a home is built as designed per this KB home plan. \*\*Actual energy costs and savings (if any) for any built home will vary over time, and may vary substantially, based on a number of factors and variables. Important information about the HERS Index and the estimated energy costs and savings figures shown for this KB home plan is available online at <https://www.kbhome.com/energy-efficient-homes> and at KB Home community sales offices. (rev. 04/19)

Phoenix\_Terra de Oro\_2016