

Zafiro | ONE-STORY 1,965 SQ. FT.

Lucero in Estrella



SOUTHWEST RANCH



FARMHOUSE RANCH



TERRITORIAL RANCH

PRELIMINARY
PLAN 3433

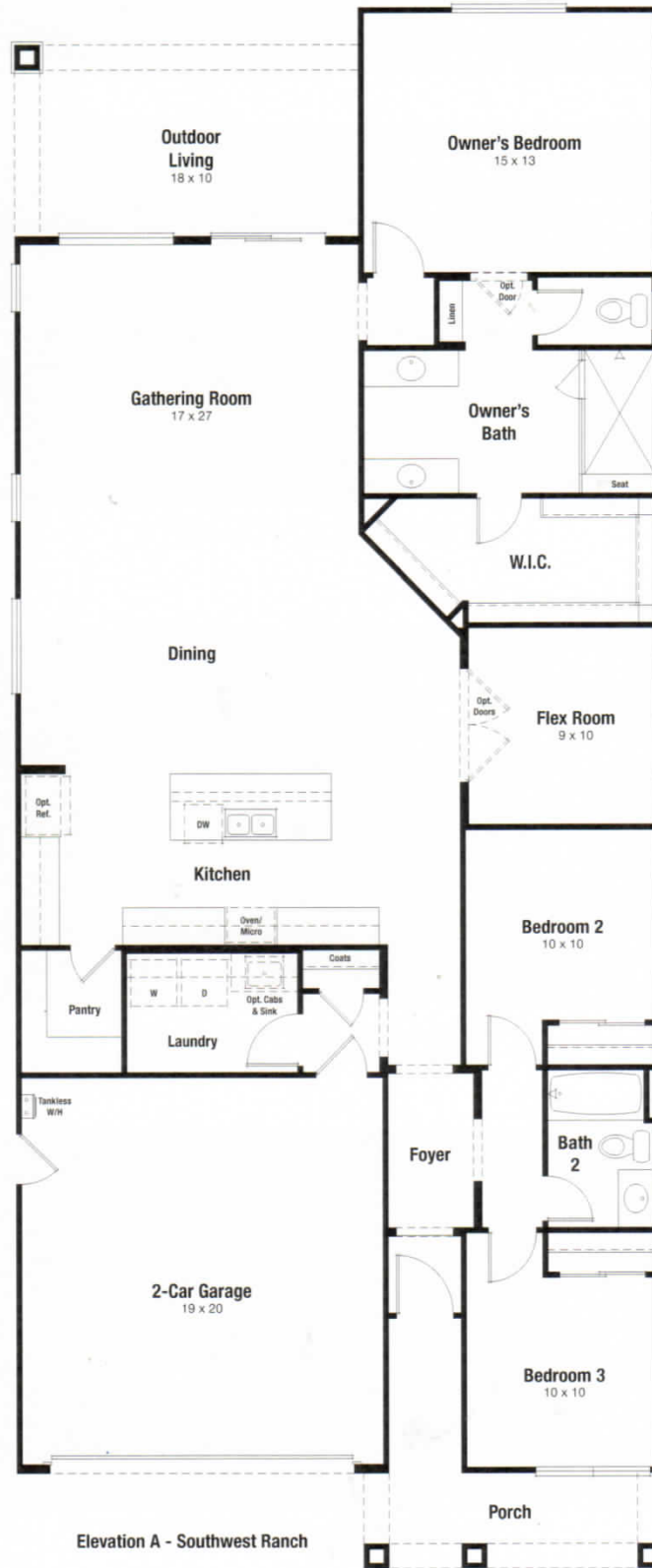


All information (including, but not limited to prices, views, availability, incentives, floor plans, site plans, features, standards and options, assessments and fees, planned amenities, programs, conceptual artists' renderings and community development plans) deemed reliable as of publication date but not guaranteed and remains subject to change daily or delay without notice. Floor plans and elevations are an artist's conception and are not intended to show specific detailing. As-Built Condition will control. Price(s) shown may not reflect lot premiums, upgrades and options. Lot status "Sold" is an inclusive term that describes the present status of any Contract-submitted, Pending-sale or Closed property. All homes subject to prior sale. Maps and plans are not to scale and all dimensions are approximate. Not an offer in any state where prohibited or otherwise restricted by law. No offer to sell or lease may be made or accepted prior to the issuance of the final AZ Subdivision Disclosure Report. A public report is available at the State Real Estate Department's website at www.azre.gov for the property of interest that is now open for sales. Please see a Community Sales Manager for details or visit www.taylormorrison.com for additional disclaimers. JCH Construction, LLC, ROC# 256789. © April, 2019, AV Homes of Arizona, LLC, AZ DRE# LC632206000. 4/8/19

taylor
morrison

Homes Inspired by You

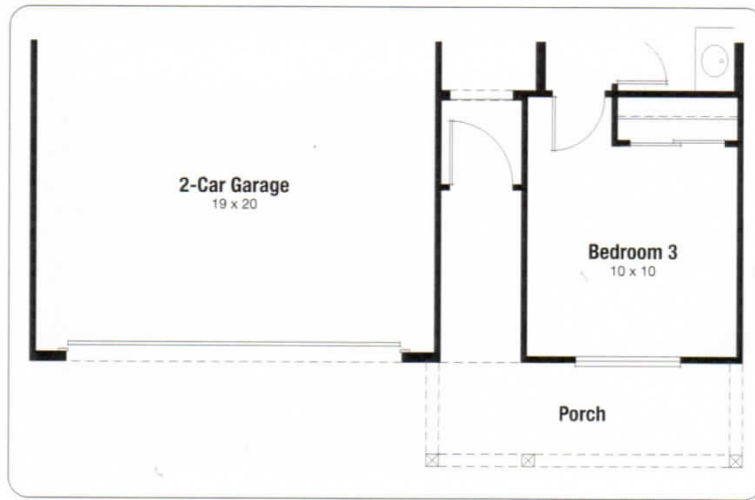




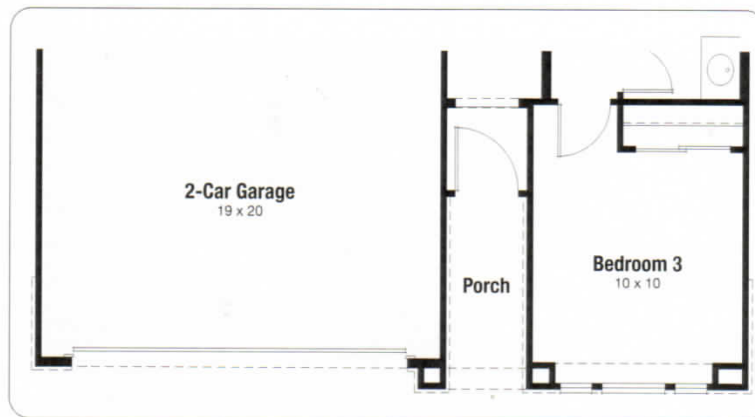
Elevation A - Southwest Ranch

PRELIMINARY
PLAN 3433

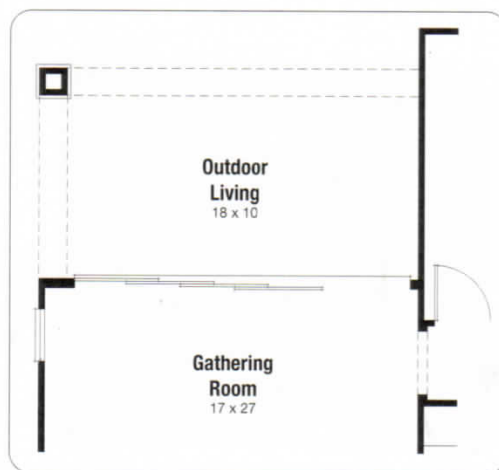
FIRST FLOOR
SOUTHWEST RANCH



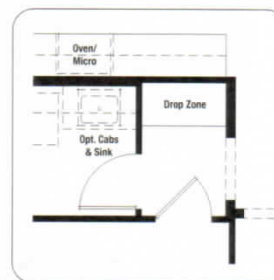
Elevation B - Farmhouse Ranch



Elevation C - Territorial Ranch



Opt. 16' Multi-Slide Glass Door at Gathering Room



Opt. Drop Zone ILO Coats

OPTIONS