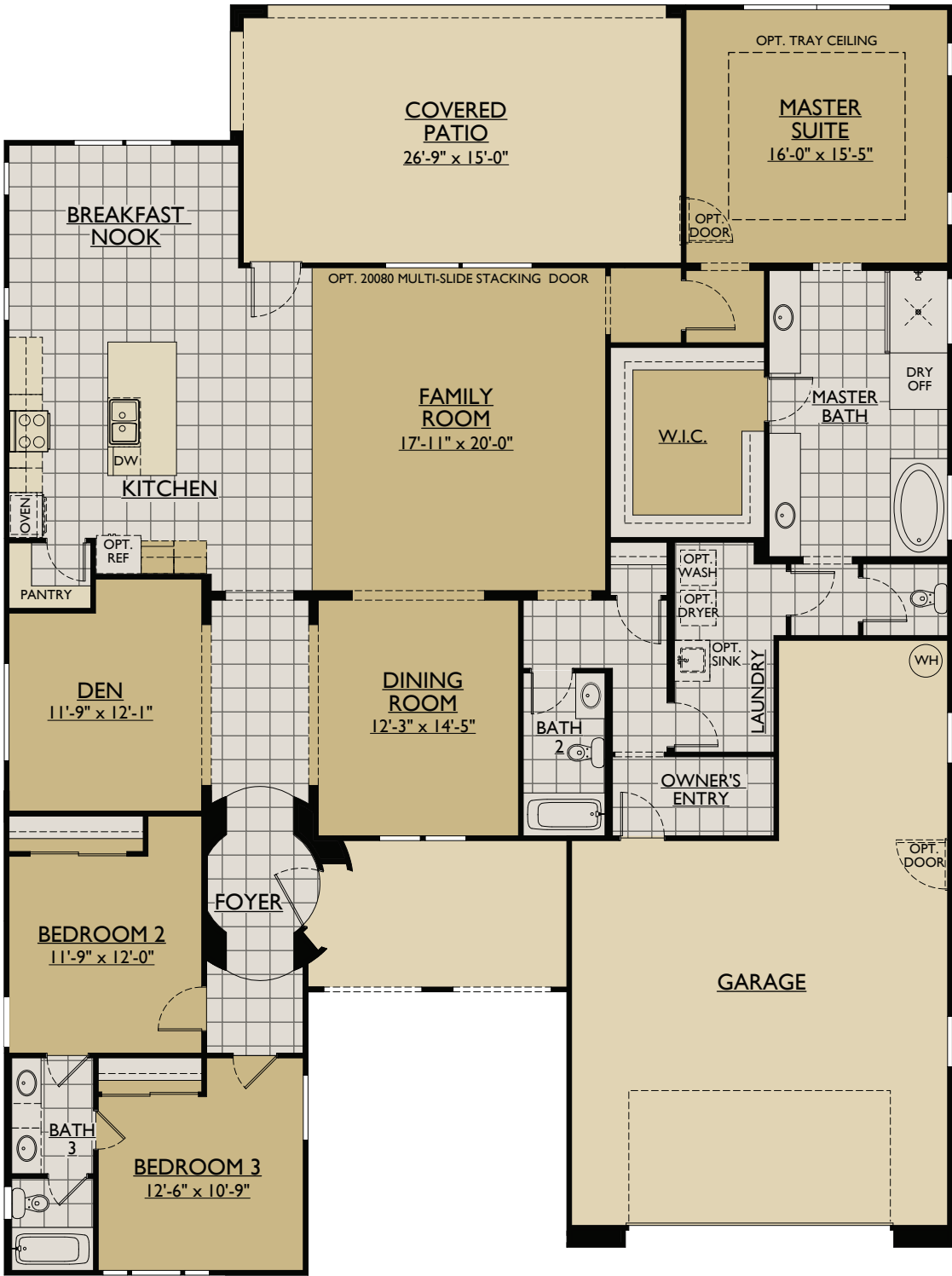


# THE CHAUCER

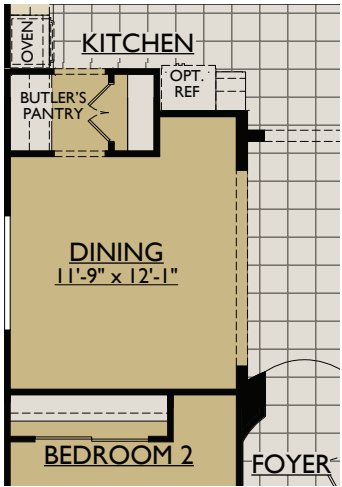
2,791 Square Feet Single Story

3-4 Bedrooms • 3 Bath • Covered Patio • Tandem Garage • Family Room  
Optional: Bedroom 4 or Study ILO Dining Room • Dining w/Butler's Pantry ILO Den  
Oversized Master Shower • Extended Covered Patio • Multi-Slide Stacking Door

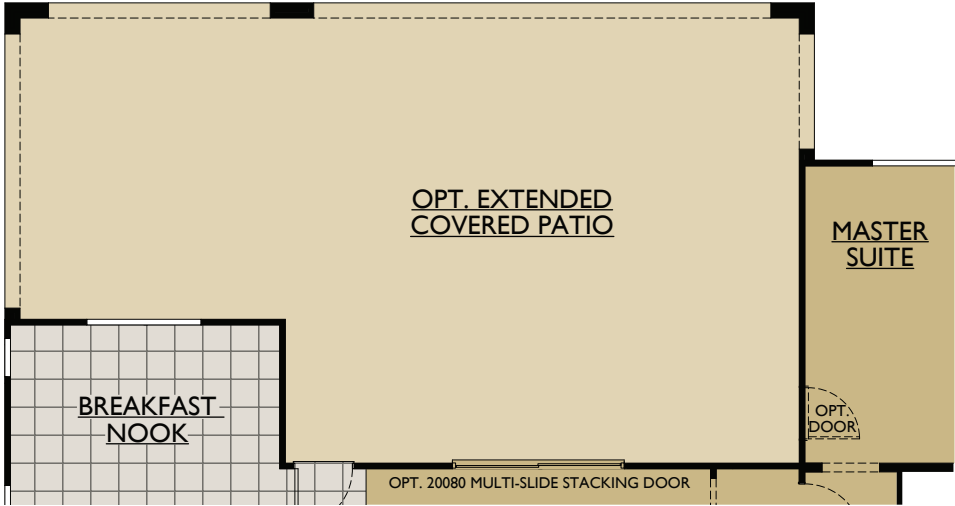
To see flexible option for this home, view our interactive floor plans at [www.WilliamRyanHomes.com](http://www.WilliamRyanHomes.com)



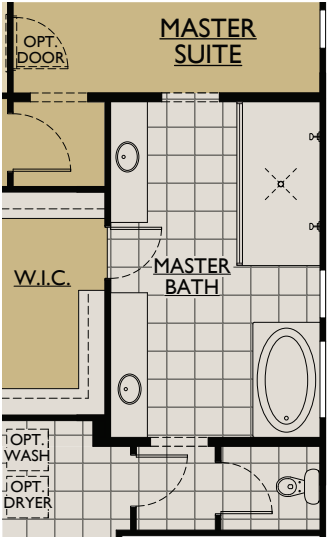
FLOOR PLAN  
SPANISH ELEVATION



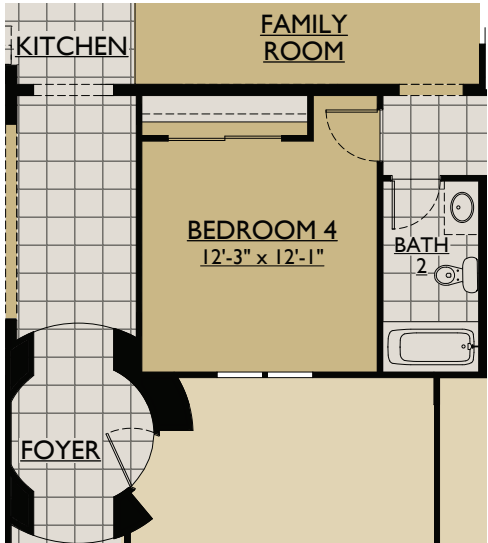
OPT. DINING ROOM  
W/BUTLER'S PANTRY ILO DEN



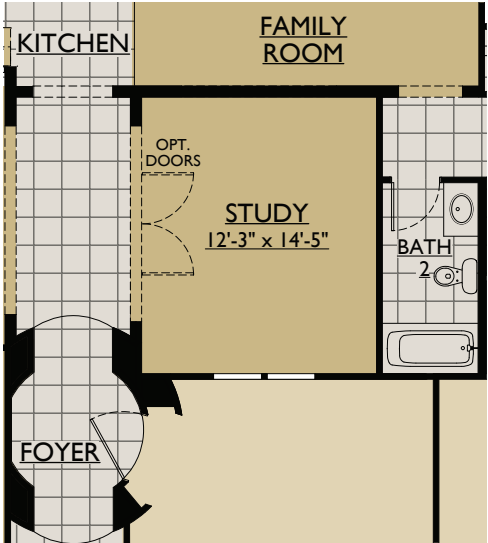
OPT. EXTENDED COVERED PATIO



OPT. OVERSIZED  
MASTER SHOWER



OPT. BEDROOM 4 ILO DINING ROOM



OPT. STUDY ILO DINING ROOM