



RESIDENCE TWO, RESIDENCE FOUR & RESIDENCE ONE  
*with Mediterranean Exterior Style*



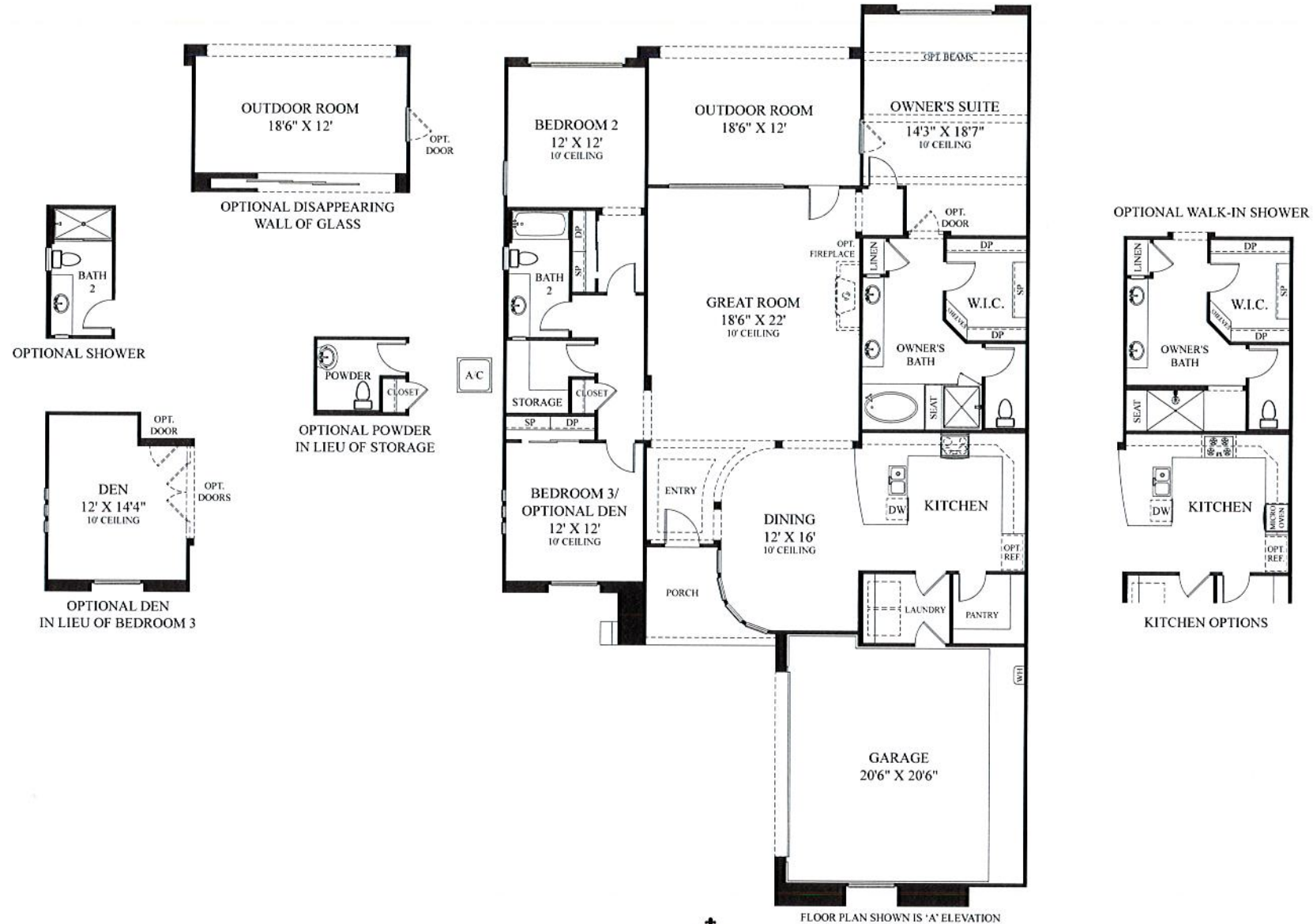
ROSEWOOD HOMES  
*Enduring Beauty. Timeless Style.®*  
[www.rosewoodhomes.com](http://www.rosewoodhomes.com)



In the interest of continuous improvement, Rosewood Homes reserves the right to change or modify pricing, plans, designs, materials, features & specifications without prior notice or obligation. All dimensions, square footages, ceiling heights, arches/soffits & window sizes, styles & locations are approximate & may vary per elevation. All renderings, floor plans & landscape are the artist's conception & may vary from the actual plans & homes as built. © Rosewood Homes 2018



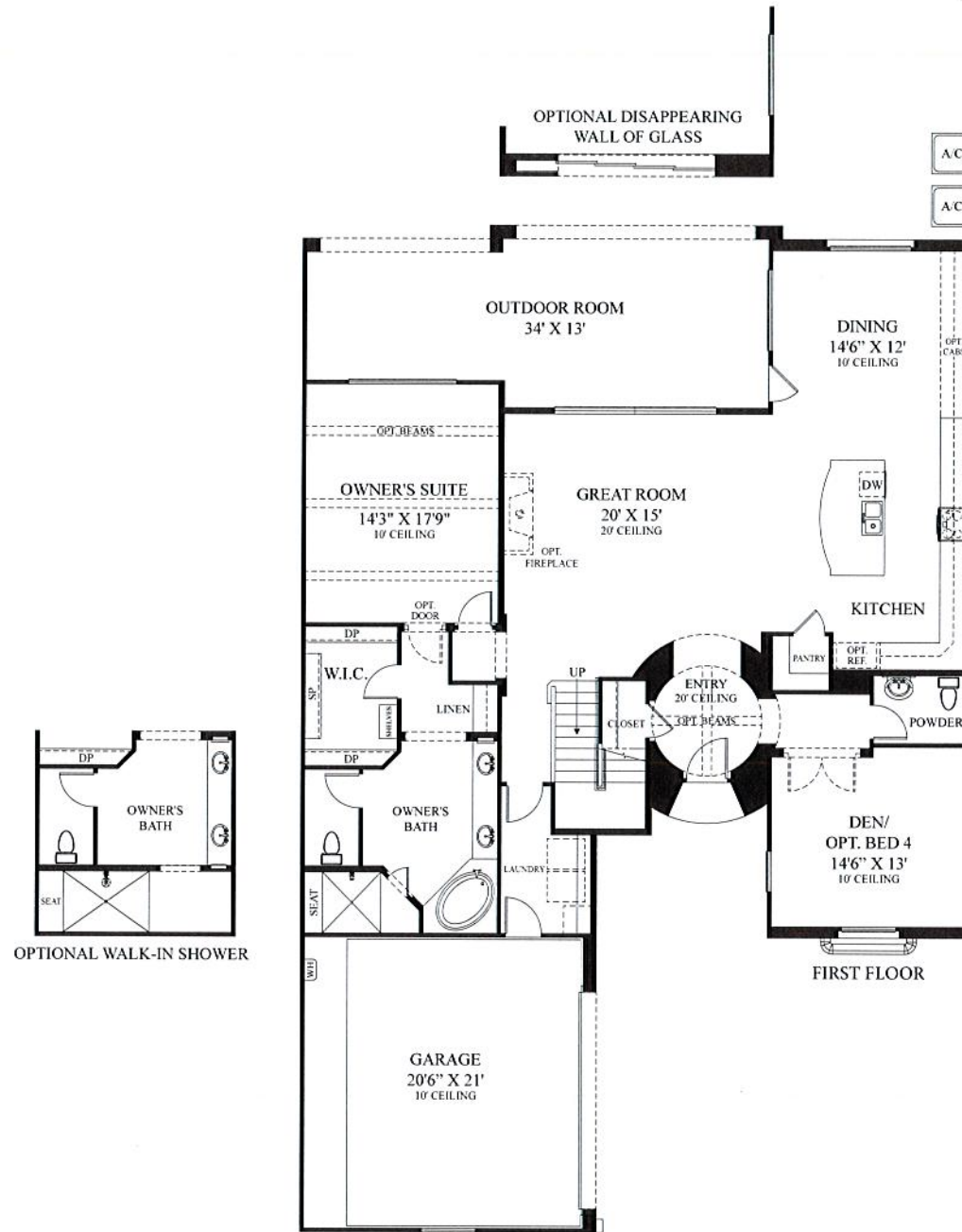
2,053 SQUARE FEET



ROSEWOOD HOMES  
Enduring Beauty. Timeless Style.®  
www.rosewoodhomes.com

# RESIDENCE FOUR

2,585 TO 2,911 SQUARE FEET



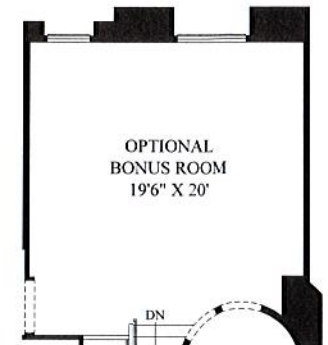
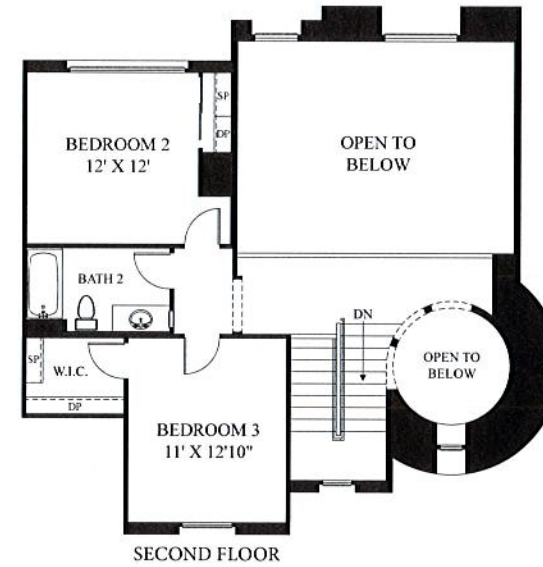
OPTIONAL WALK-IN SHOWER

FLOOR PLAN SHOWN IS 'A' ELEVATION

## KITCHEN OPTIONS



OPTIONAL BEDROOM 4 INCLUDES BATH 3



ROSEWOOD HOMES

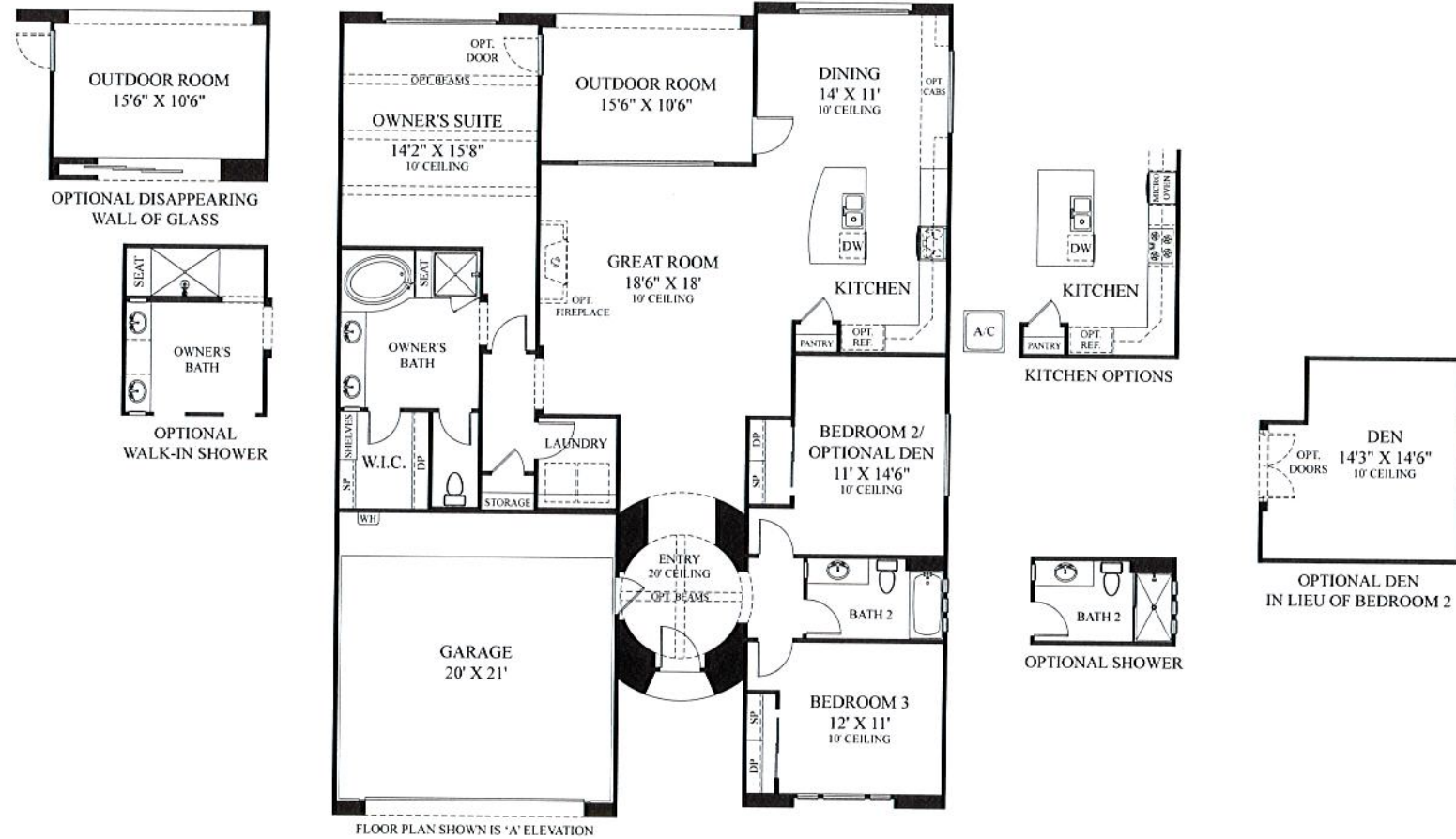
Enduring Beauty. Timeless Style.®

www.rosewoodhomes.com



# RESIDENCE ONE

1,886 SQUARE FEET



ROSEWOOD HOMES

Enduring Beauty. Timeless Style.®

www.rosewoodhomes.com

In the interest of continuous improvement, Rosewood Homes reserves the right to change or modify pricing, plans, designs, materials, features & specifications without prior notice or obligation. All dimensions, square footages, ceiling heights, arches/soffits & window sizes, styles & locations are approximate & may vary per elevation. All renderings, floor plans & landscape are the artist's conception & may vary from the actual plans & homes as built. 11-9-18

© Rosewood Homes 2018

