

THE TIMOTHY

Approx. 2,300 sq. ft. | 1 story | 3-4 bedrooms | 2-car garage | Plan #P23T



ELEVATION D

ABOUT THE TIMOTHY

The Timothy floor plan opens with two bedrooms, each with their own walk-in closet. A private study is adjacent, which can be optioned as a dining room or a fourth bedroom. An inviting open layout showcases a great room, a breakfast nook, and a kitchen—complete with a walk-in pantry and a center island—that can be personalized with gourmet features. The master suite is across the foyer, and offers a large walk-in closet and an attached bath with dual sinks and three deluxe options. Additional options include gourmet kitchen options, center meet or multi-slide door and an extended covered patio.



ELEVATION A



ELEVATION B



ELEVATION C

MAIN FLOOR



THIS PLAN'S PROJECTED
HERS® INDEX = 63*
 Projected Rating Based on Plans – Field Confirmation required

How does this floor plan rate?

Take a look: **100** = Standard new home+ **130** = Typical resale Home**
 The lower number, the better! Refer to the RESNET® HERS index brochure or
 go to www.RESNET.us and www.HERSindex.com

MAIN FLOOR OPTIONS



**OPT. DELUXE
MASTER BATH #1**



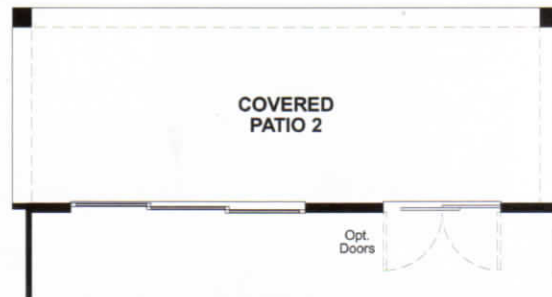
**OPT. DELUXE
MASTER BATH #2**



**OPT. DELUXE
MASTER BATH #3**



OPT. CENTER MEET DOOR AT NOOK



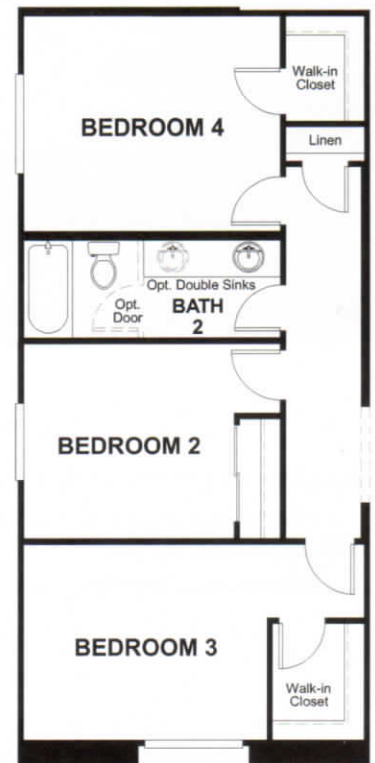
**OPT. MULTI-SLIDE DOOR
AT GREAT ROOM**



OPT. DINING



OPT. GOURMET KITCHEN



OPT. BEDROOM 4

What's a HERS® Index? HERS stands for Home Energy Rating System, a system created by RESNET® to measure home energy efficiency.®

A Projected HERS index or rating is a computer simulation performed prior to construction by a third-party HERS rater using RESNET-accredited rating software, rated feature and specification data derived from home plans, features and specifications, and other data selected or assumed by the rater. The projected HERS index is approximate and is subject to change without notice. Actual results will vary.