

# THE AUGUSTA

Approx. 1,940 sq. ft. | 1 story | 3-4 bedrooms | 2-car garage | Plan #P740



ELEVATION D

## ABOUT THE AUGUSTA

The ranch-style Augusta offers thoughtfully designed living space with a range of personalization possibilities. The foyer leads to an open floor plan with a kitchen, a great room, a dining room and a covered patio. Looking for extra space for entertaining? Add a club room and an extended covered patio! You'll find a spacious master suite next to the dining room, showcasing a walk-in closet and an attached bath that can be personalized with three deluxe options. This plan also offers two bedrooms and a bath; for more space, choose another bedroom in lieu of storage. Additional options include gourmet features in the kitchen, a corner-meet door in the great room, multi slide and center meet door options and a study instead of third bathroom.



ELEVATION A

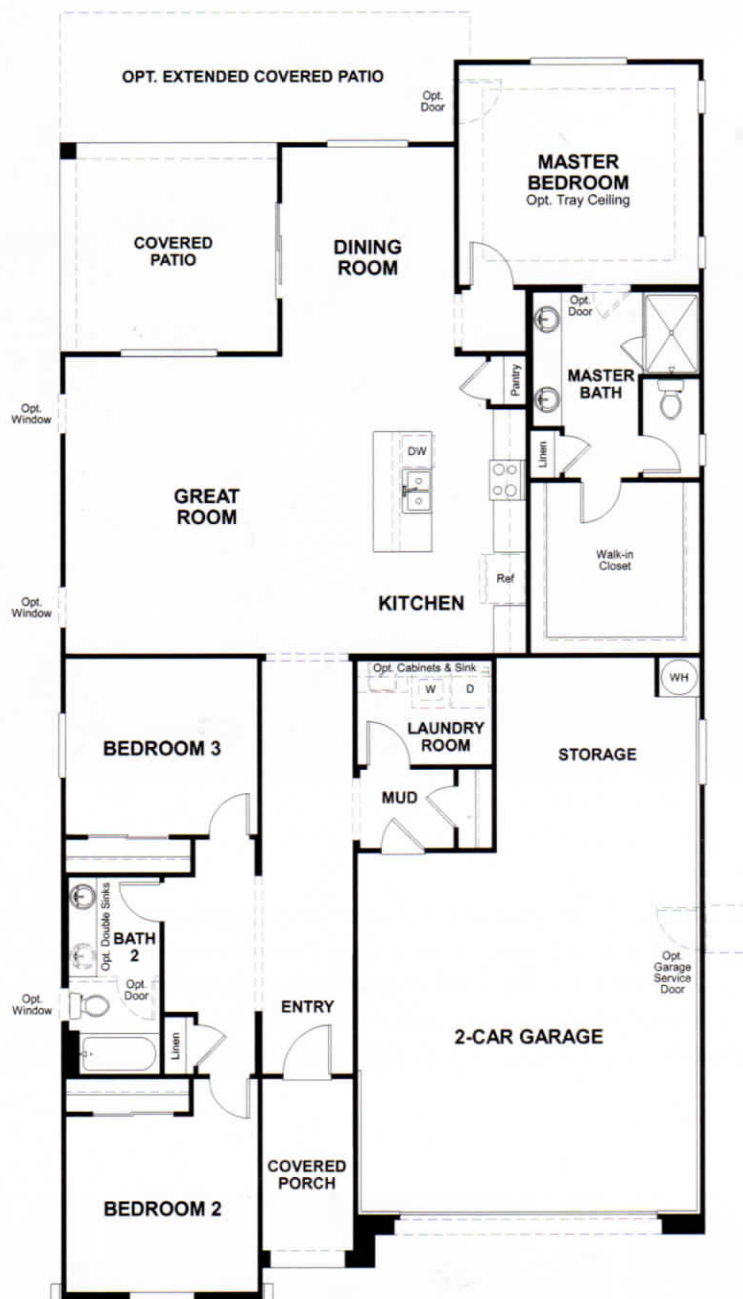


ELEVATION B



ELEVATION C

## MAIN FLOOR



THIS PLAN'S PROJECTED  
**HERS® INDEX = 64\***

Projected Rating Based on Plans – Field Confirmation required

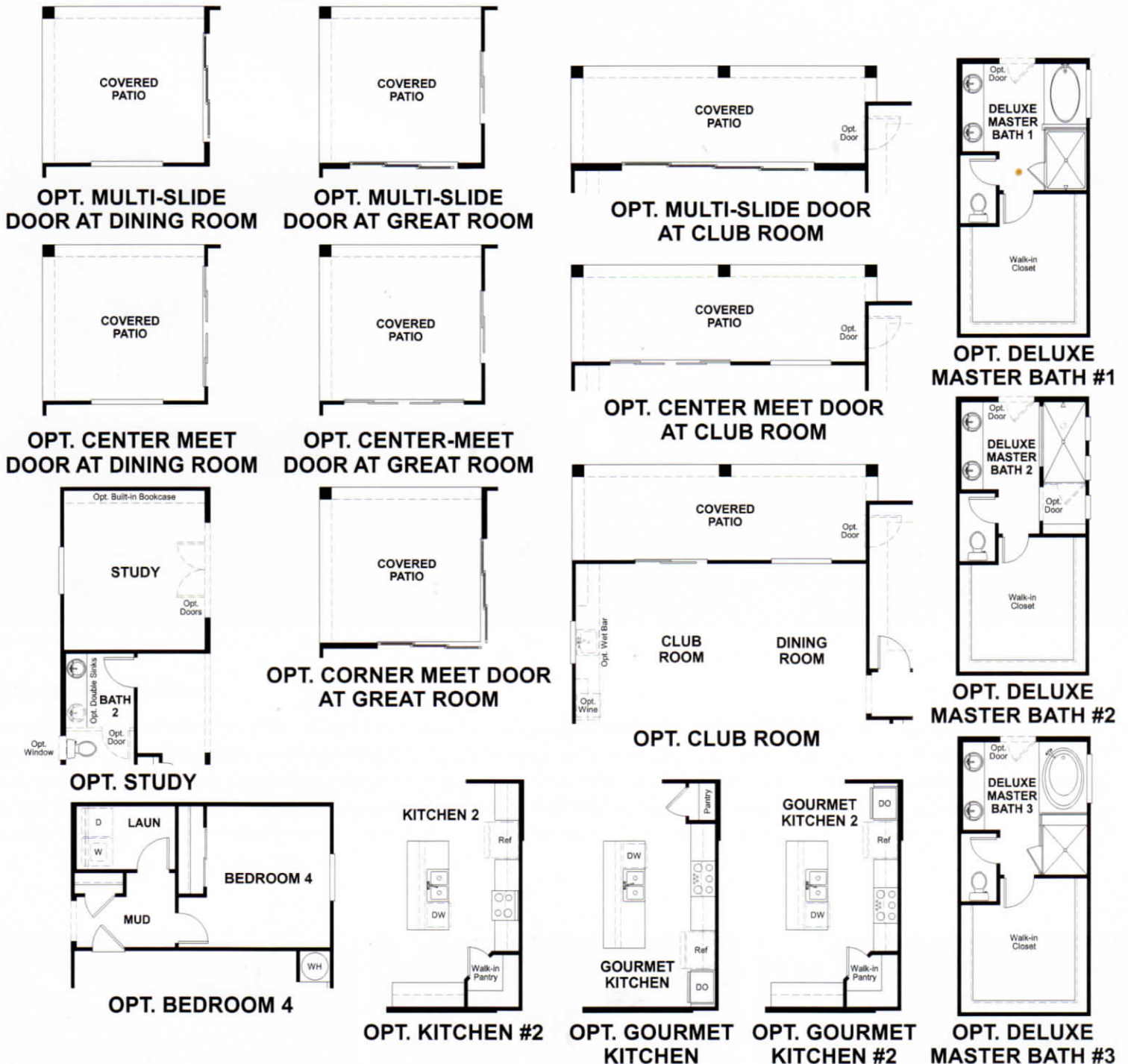
### How does this floor plan rate?

Take a look: **100** = Standard new home+ **130** = Typical resale Home++

The lower number, the better! Refer to the RESNET® HERS index brochure or go to [www.RESNET.us](http://www.RESNET.us) and [www.HERSindex.com](http://www.HERSindex.com)



## MAIN FLOOR OPTIONS



**What's a HERS® Index?** HERS stands for Home Energy Rating System, a system created by RESNET® to measure home energy efficiency.¹

A Projected HERS index or rating is a computer simulation performed prior to construction by a third-party HERS rater using RESNET-accredited rating software, rated feature and specification data derived from home plans, features and specifications, and other data selected or assumed by the rater. The projected HERS index is approximate and is subject to change without notice. Actual results will vary.