

THE HANSON

Approx. 2,580 sq. ft. | 1 story | 3-4 bedrooms | 3-car tandem + RV garage | Plan #P775



ELEVATION C

ABOUT THE HANSON

Discover the Hanson, a thoughtful ranch plan with three generous bedrooms—including a lavish master suite with a private bath—and an open, airy layout for entertaining. Highlights include a quiet study, an expansive great room and an impressive kitchen with a walk-in pantry, center island and optional gourmet features. You'll also appreciate a large covered patio, a 2-car garage with a third tandem space and a convenient RV garage. Make this home your own with an optional home management center and a dining room or fourth bedroom in lieu of the study.

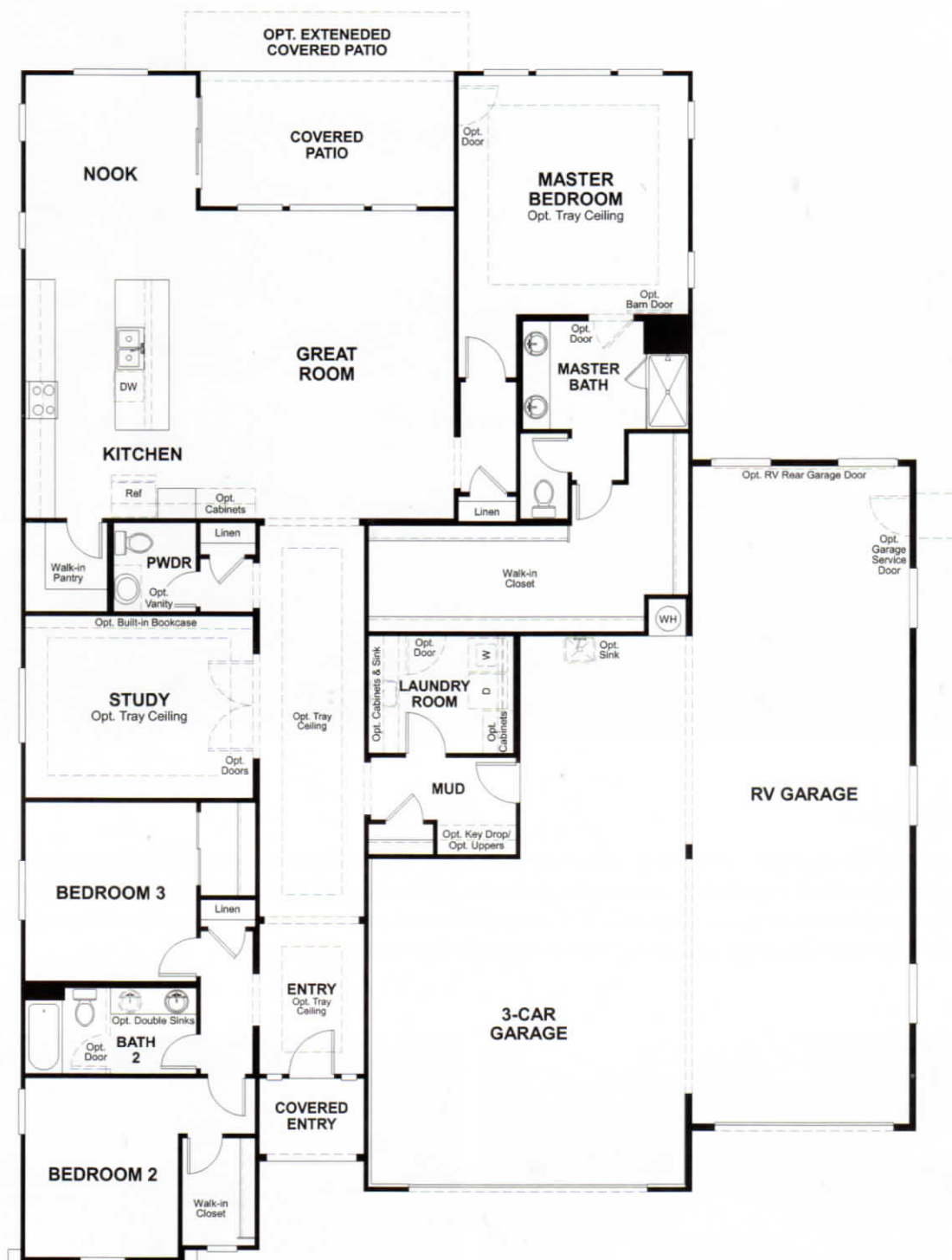


ELEVATION A



ELEVATION B

MAIN FLOOR



THIS PLAN'S PROJECTED
HERS® INDEX = 62*

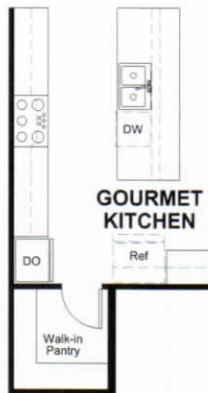
Projected Rating Based on Plans – Field Confirmation required

How does this floor plan rate?

Take a look: **100** = Standard new home* **130** = Typical resale Home**

The lower number, the better! Refer to the RESNET® HERS index brochure or go to www.RESNET.us and www.HERSindex.com

MAIN FLOOR OPTIONS



OPT. GOURMET KITCHEN



OPT. DELUXE MASTER BATH 1



OPT. CENTER-MEET AT GREAT ROOM



OPT. BEDROOM 4 W/ BATH 3



OPT. DELUXE MASTER BATH 2



OPT. MULTI-SLIDE AT GREAT ROOM



OPT. DINING ROOM



OPT. DELUXE MASTER BATH 3



OPT. HOME MANAGEMENT

What's a HERS® Index? HERS stands for Home Energy Rating System, a system created by RESNET® to measure home energy efficiency.*

A Projected HERS index or rating is a computer simulation performed prior to construction by a third-party HERS rater using RESNET-accredited rating software, rated feature and specification data derived from home plans, features and specifications, and other data selected or assumed by the rater. The projected HERS index is approximate and is subject to change without notice. Actual results will vary.