

THE ROCCO

Approx. 3,470 sq. ft. | 1 story | 4 bedrooms | 3- to 4-car garage | Plan #P34R



ELEVATION C

ABOUT THE ROCCO

The Rocco comes with an inspired courtyard entrance. Inside, a spacious floor plan is anchored by a great room that flows into a breakfast nook—with an adjacent formal dining room—and an open kitchen with a large eat-in island and access to the covered patio. A private study and four comfortable bedrooms complete this floor plan—including a master suite with a spa-like master bath and dual walk-in closets. Personalization options include an extended covered patio, pet spa, wet bar at dining room, deluxe master bath options and more!

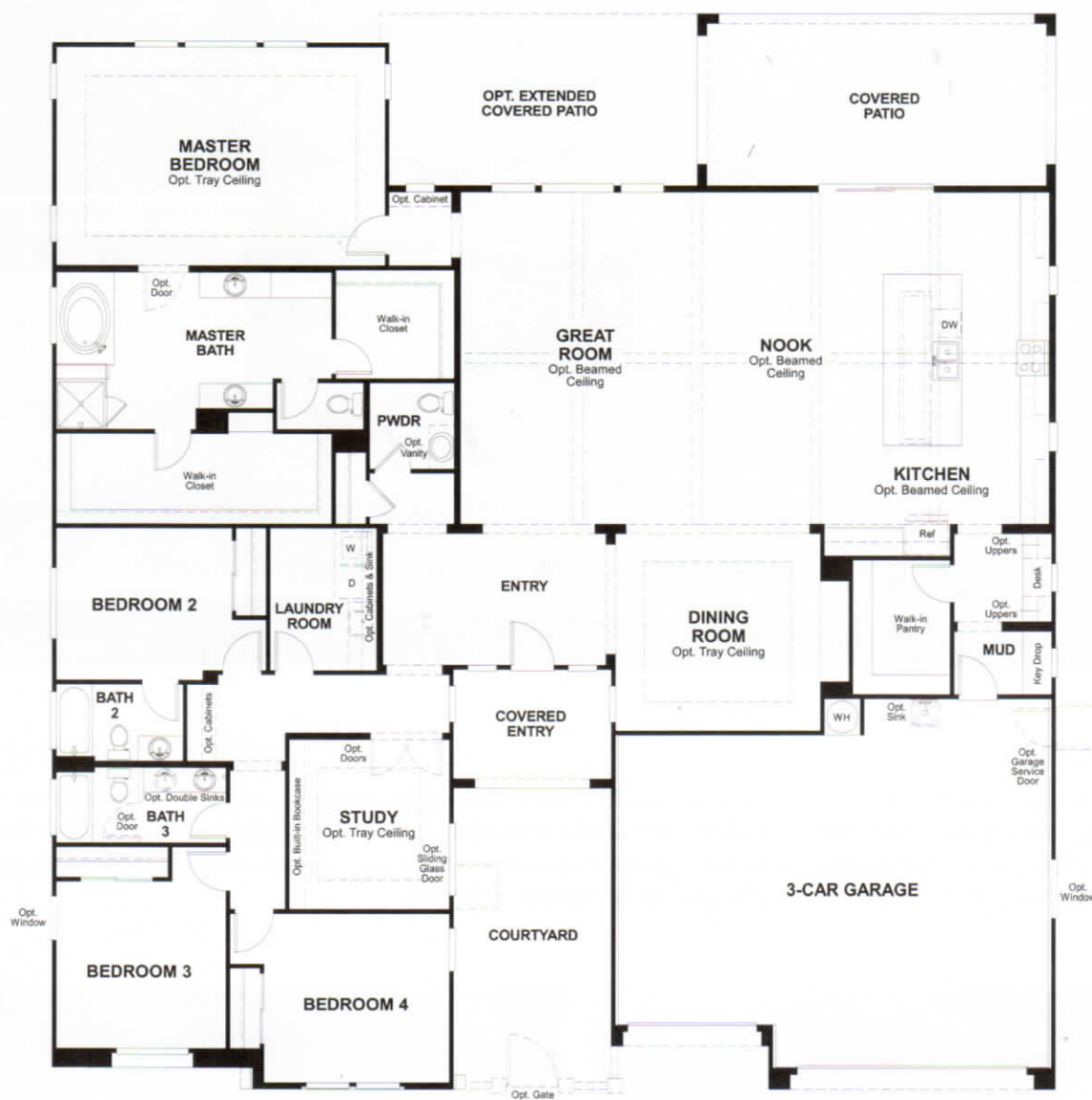


ELEVATION A



ELEVATION B

MAIN FLOOR

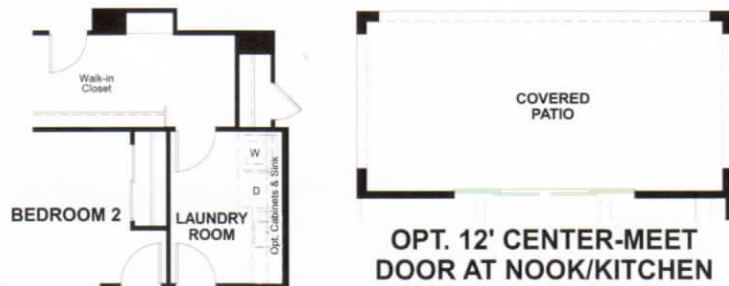


THIS PLAN'S PROJECTED
HERS® INDEX = 60*
 Projected Rating Based on Plans – Field Confirmation required

How does this floor plan rate?

Take a look: **100** = Standard new home+ **130** = Typical resale Home++
 The lower number, the better! Refer to the RESNET® HERS index brochure or
 go to www.RESNET.us and www.HERSindex.com

MAIN FLOOR OPTIONS



OPT. ALT. LAUNDRY ENTRANCE

OPT. MULTI-SLIDE DOOR AT NOOK/KITCHEN



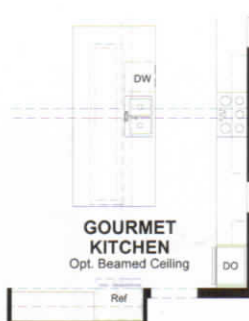
OPT. PET SPA



OPT. WET BAR AT DINING ROOM



OPT. WINE ROOM



OPT. GOURMET KITCHEN



OPT. MASTER BATH SPA BATH



OPT. MASTER BATH W/ FREE-STANDING TUB



OPT. MASTER BATH WALK-IN SHOWER



OPT. 1-CAR GARAGE

What's a HERS® Index? HERS stands for Home Energy Rating System, a system created by RESNET® to measure home energy efficiency.®

A Projected HERS index or rating is a computer simulation performed prior to construction by a third-party HERS rater using RESNET-accredited rating software, rated feature and specification data derived from home plans, features and specifications, and other data selected or assumed by the rater. The projected HERS index is approximate and is subject to change without notice. Actual results will vary.