

THE HARLEY

Approx. 2,740 sq. ft. | 1 story | 3-5 bedrooms | 3-car garage | Plan #P776



ELEVATION C

ABOUT THE HARLEY

Entertaining is easy in the ranch-style Harley plan, which boasts a well-appointed kitchen with a walk-in pantry, center island and breakfast nook, and a adjacent great room overlooking a relaxing covered patio. A quiet study can be optioned as an extra bedroom or formal dining room, and a spacious master suite with attached bath and walk-in closet is separated from two additional bedrooms for privacy. Both a 2-car garage and an RV garage are included. Personalize this plan with an optional gourmet kitchen, second master bedroom, club room and more!

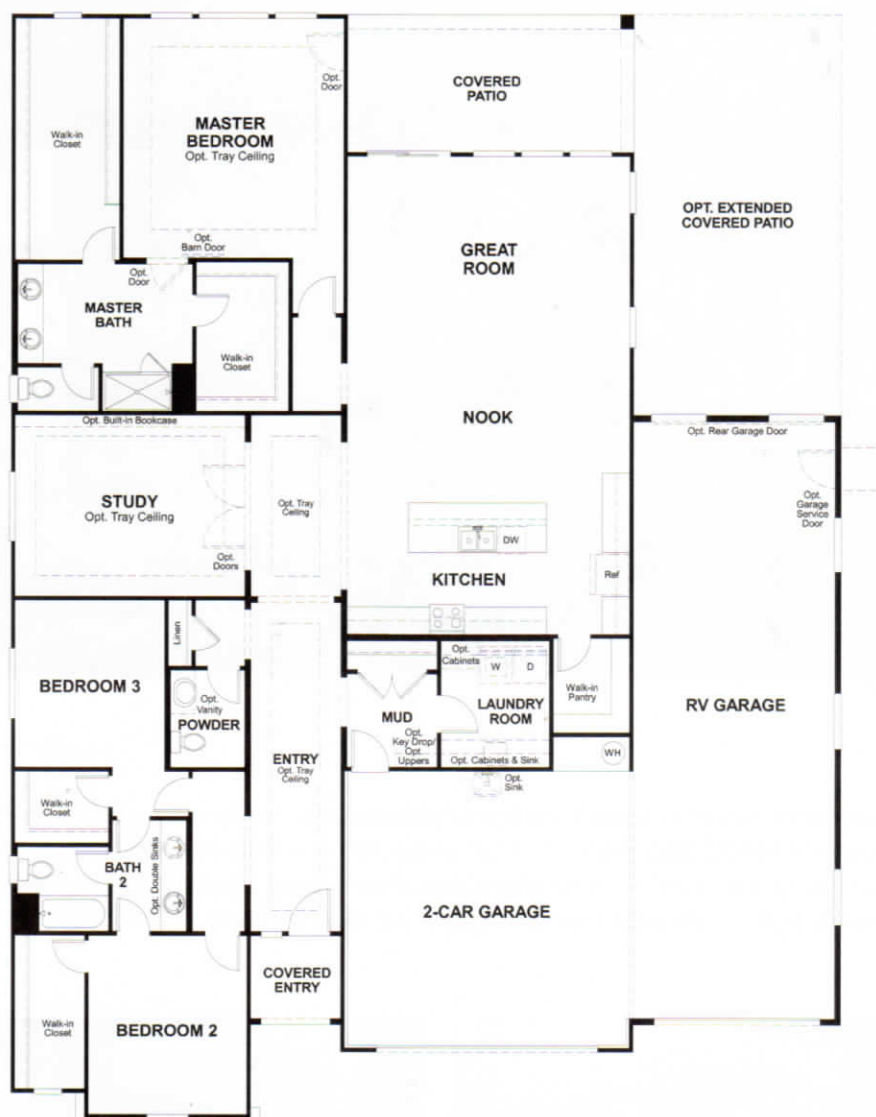


ELEVATION A



ELEVATION B

MAIN FLOOR



THIS PLAN'S PROJECTED
HERS® INDEX = 59*
 Projected Rating Based on Plans – Field Confirmation required

How does this floor plan rate?

Take a look: **100** = Standard new home+ **130** = Typical resale Home++
 The lower number, the better! Refer to the RESNET® HERS index brochure or
 go to www.RESNET.us and www.HERSindex.com

MAIN FLOOR OPTIONS



OPT. CLUB ROOM



OPT. MASTER BEDROOM 2



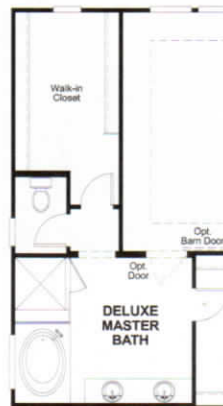
OPT. BEDROOM 5/BATH 4



OPT. DELUXE MASTER BATH 1



OPT. DELUXE MASTER BATH 2



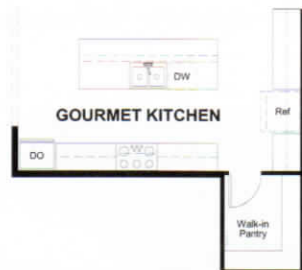
OPT. DELUXE MASTER BATH 3



OPT. MULTI-SLIDE AT GREAT ROOM



OPT. CENTER-MEET AT GREAT ROOM



OPT. GOURMET KITCHEN



OPT. DINING ROOM



OPT. BEDROOM 4 W/ BATH 3

What's a HERS® Index? HERS stands for Home Energy Rating System, a system created by RESNET® to measure home energy efficiency.[^]

A Projected HERS index or rating is a computer simulation performed prior to construction by a third-party HERS rater using RESNET-accredited rating software, rated feature and specification data derived from home plans, features and specifications, and other data selected or assumed by the rater. The projected HERS index is approximate and is subject to change without notice. Actual results will vary.