

# THE EMERALD

Approx. 2,090 sq. ft. | 1 story | 4-5 bedrooms | 2-car garage | Plan #P926



ELEVATION C

## ABOUT THE EMERALD

The Emerald floor plan shines as brightly as its namesake. A covered entry greets guests, and leads past two bedrooms and a bath. Across the foyer, you'll find a living room that can be optioned as either a teen room or a fifth bedroom. An airy, open layout showcases the kitchen, the dining room and the great room, which has access to the covered patio via the center-meet door. The impressive master suite is adjacent, and includes a walk-in closet and an attached bath. An additional bedroom and bath complete the home. Want a little more space to kick back? You can opt for a private study in lieu of the third bedroom! This plan also offers the option of a multi-generational living suite, featuring a separate entry at the living room and a private bed, bath and lounge area.

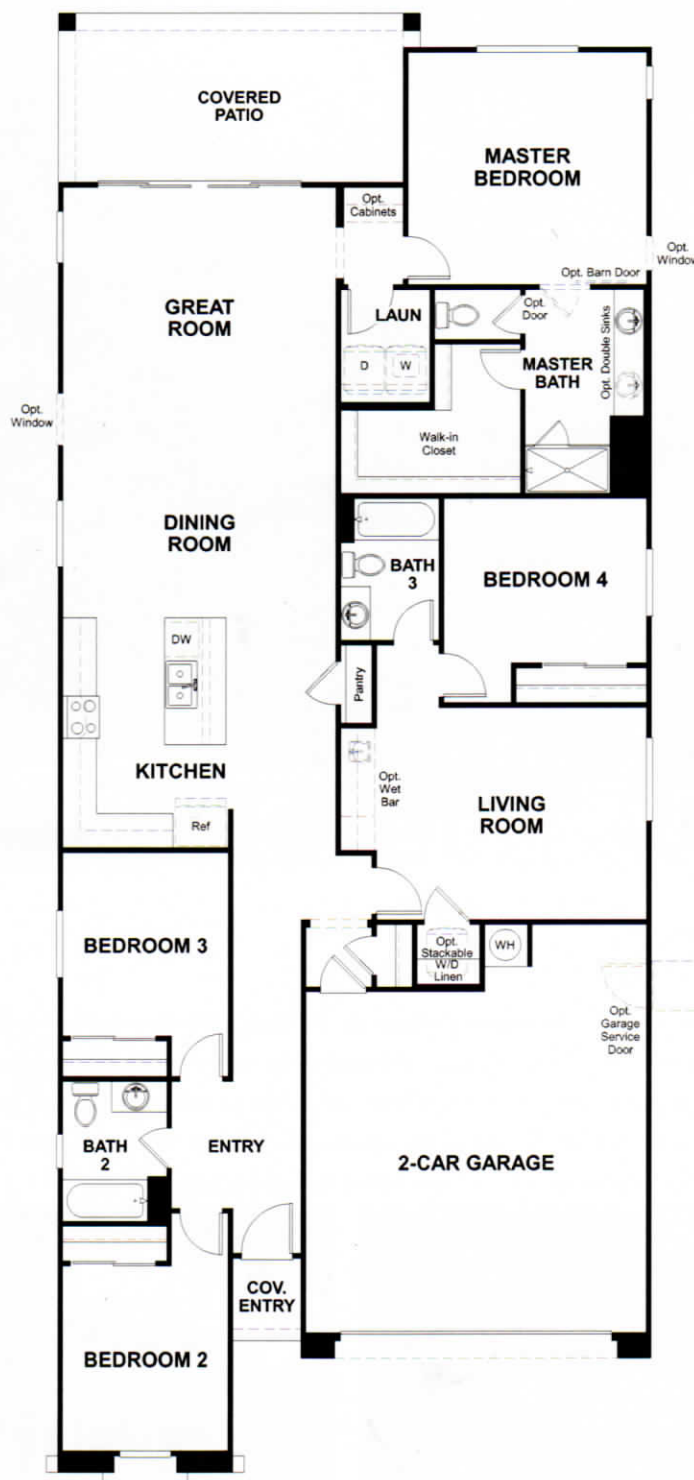


ELEVATION A



ELEVATION B

MAIN FLOOR



THIS PLAN'S PROJECTED  
**HERS® INDEX = 68\***  
 Projected Rating Based on Plans – Field Confirmation required

**How does this floor plan rate?**

Take a look: **100** = Standard new home\* **130** = Typical resale Home\*\*  
 The lower number, the better! Refer to the RESNET® HERS index brochure or  
 go to [www.RESNET.us](http://www.RESNET.us) and [www.HERSindex.com](http://www.HERSindex.com)



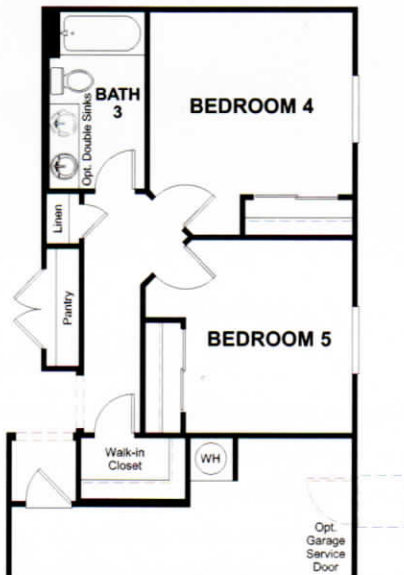
## MAIN FLOOR OPTIONS



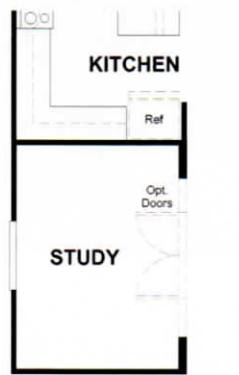
**OPT. DOOR AT LIVING**



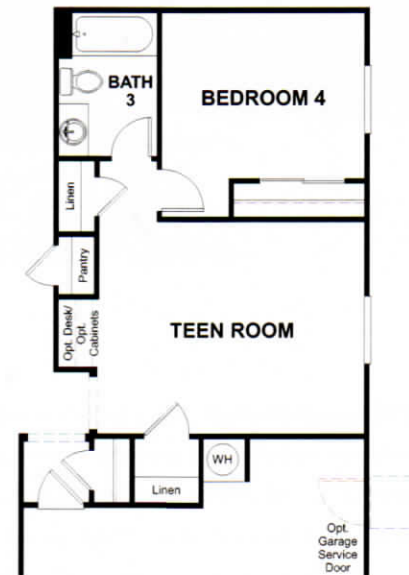
**OPT. BENCH AT  
MASTER BATH SHOWER**



**OPT. BEDROOM 5**



**OPT. STUDY**



**OPT. TEEN ROOM**

**What's a HERS® Index?** HERS stands for Home Energy Rating System, a system created by RESNET® to measure home energy efficiency.®

A Projected HERS index or rating is a computer simulation performed prior to construction by a third-party HERS rater using RESNET-accredited rating software, rated feature and specification data derived from home plans, features and specifications, and other data selected or assumed by the rater. The projected HERS index is approximate and is subject to change without notice. Actual results will vary.