

THE STEPHEN

Approx. 1,930 sq. ft. | 1 story | 3-4 bedrooms | 3-car tandem garage | Plan #P19S



ELEVATION C

ABOUT THE STEPHEN

This ranch-style floor plan boasts an inviting great room, an elegant dining room and a well-appointed kitchen, an expansive walk-in pantry and a generous center island. You'll also appreciate a convenient laundry room and three inviting bedrooms, including a luxurious master suite with a roomy walk-in closet and private bath with double sinks. Personalization options include a gourmet kitchen, a private study and center-meet or multi-slide doors that open onto a relaxing covered patio. 3-car garage included!



ELEVATION A



ELEVATION B



THIS PLAN'S PROJECTED
HERS® INDEX = 63*

Projected Rating Based on Plans – Field Confirmation required

How does this floor plan rate?

Take a look: **100** = Standard new home+ **130** = Typical resale Home**

The lower number, the better! Refer to the RESNET® HERS index brochure or go to www.RESNET.us and www.HERSindex.com

MAIN FLOOR OPTIONS



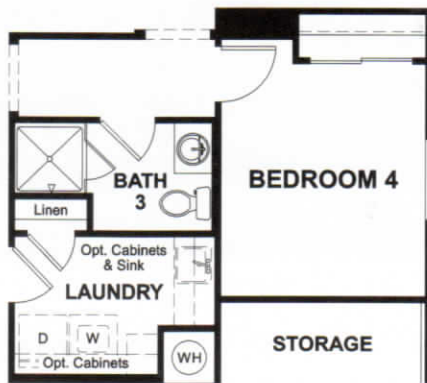
OPT. GOURMET KITCHEN



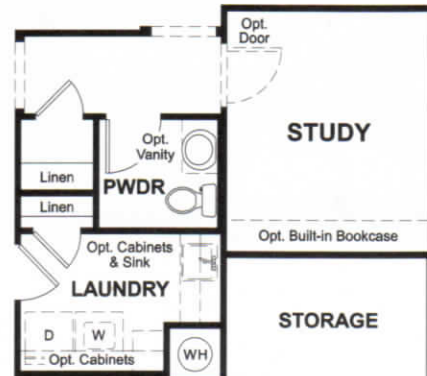
OPT. KITCHEN 2



OPT. GOURMET KITCHEN 2



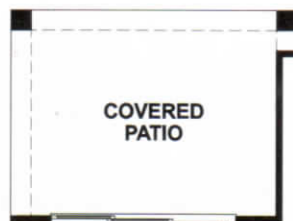
OPT. BEDROOM 4/
BATH 3



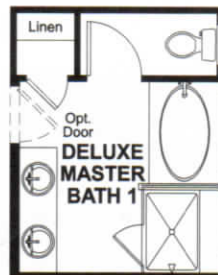
OPT. STUDY



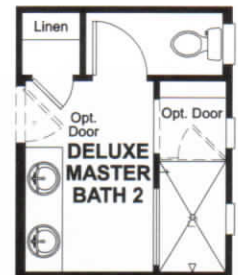
OPT. CENTER MEET
DOOR AT DINING



OPT. MULTI-SLIDE
DOOR AT DINING



OPT. DELUXE
MASTER BATH #1



OPT. DELUXE
MASTER BATH #2

What's a HERS® Index? HERS stands for Home Energy Rating System, a system created by RESNET® to measure home energy efficiency. A Projected HERS index or rating is a computer simulation performed prior to construction by a third-party HERS rater using RESNET-accredited rating software, rated feature and specification data derived from home plans, features and specifications, and other data selected or assumed by the rater. The projected HERS index is approximate and is subject to change without notice. Actual results will vary.