

THE RALEIGH

Approx. 2,220 sq. ft. | 1 story | 3-5 bedrooms | 2.5-car garage | Plan #P741



ELEVATION C

ABOUT THE RALEIGH

You'll find plenty to love about the Raleigh plan, a versatile ranch-style home with a number of personalization options. Located off the entryway, a spacious study can also be optioned as a dining room, an extra bedroom and even a guest suite with a full bath and walk-in closet. The center of the home boasts a large kitchen with a convenient center island and walk-in pantry. The kitchen flows into an open-concept nook and great room, which offers direct access to an inviting covered patio. From the great room, you can also make your way to two secondary bedrooms, as well as a secluded master suite with a private bath and walk-in closet. Additional options include a fifth bedroom in lieu of garage storage space, a gourmet kitchen with a butler's pantry or tech center, and three deluxe master bath layouts.

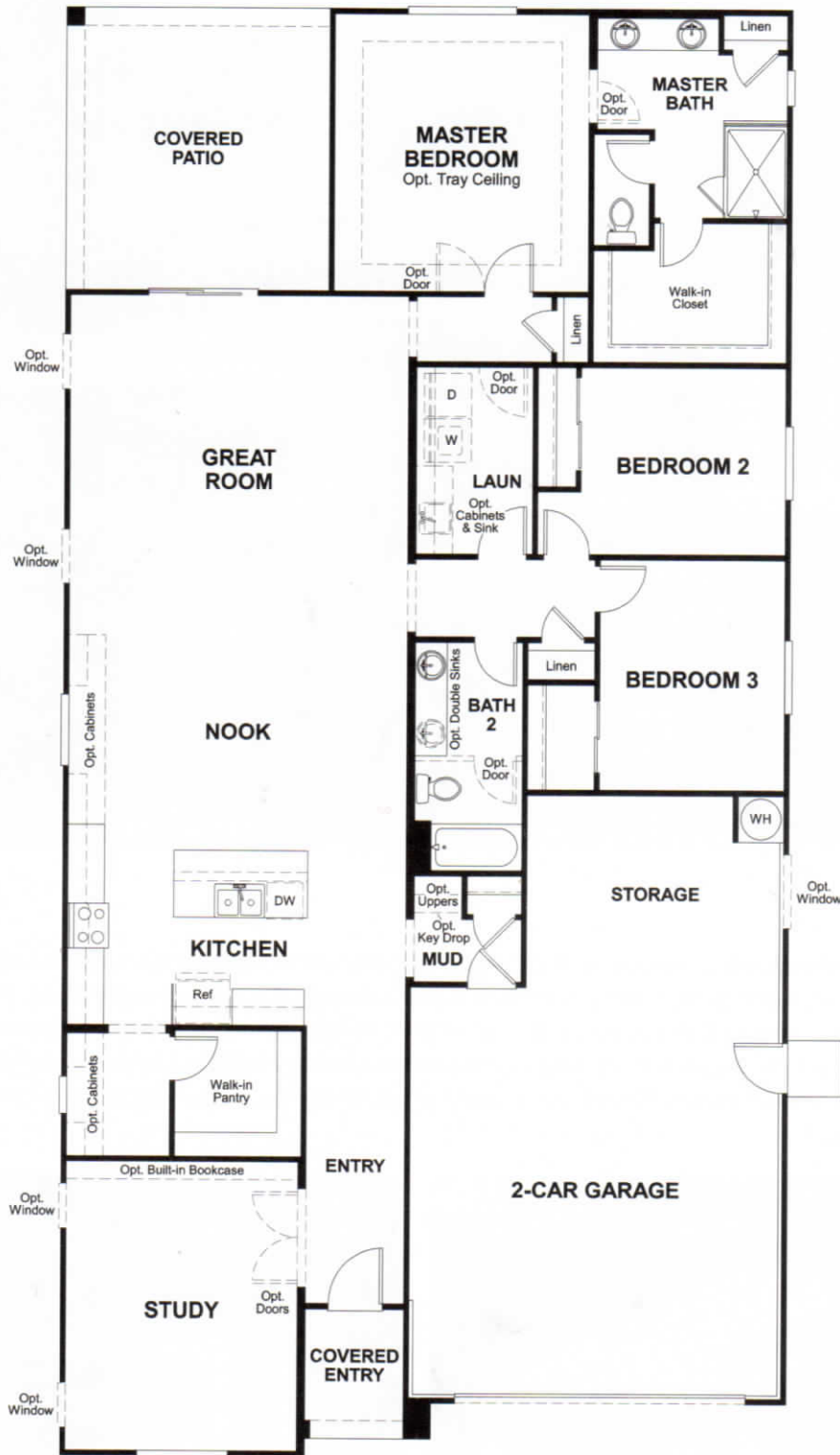


ELEVATION A



ELEVATION B

MAIN FLOOR



THIS PLAN'S PROJECTED
HERS® INDEX = 62*
 Projected Rating Based on Plans – Field Confirmation required

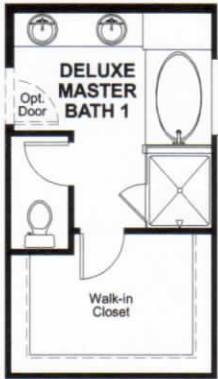
How does this floor plan rate?

Take a look: **100** = Standard new home+ **130** = Typical resale Home++
 The lower number, the better! Refer to the RESNET® HERS index brochure or go to www.RESNET.us and www.HERSindex.com

MAIN FLOOR OPTIONS

OPT. CENTER-MEET DOOR

OPT. MULTI-SLIDE DOOR



OPT. DELUXE MASTER BATH #1



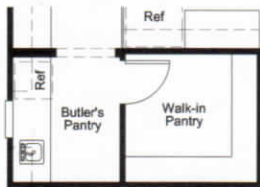
OPT. DELUXE MASTER BATH #2



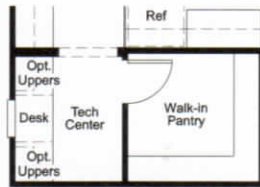
OPT. DELUXE MASTER BATH #3



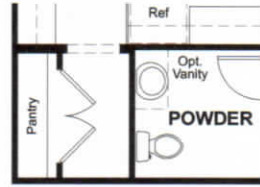
OPT. BEDROOM 4



OPT. BUTLER'S PANTRY



OPT. TECH



OPT. POWDER ROOM



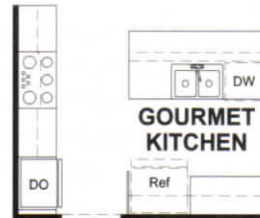
OPT. GUEST SUITE



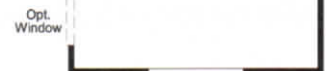
OPT. BEDROOM 5



OPT. DINING ROOM



OPT. GOURMET KITCHEN



What's a HERS® Index? HERS stands for Home Energy Rating System, a system created by RESNET® to measure home energy efficiency. A Projected HERS index or rating is a computer simulation performed prior to construction by a third-party HERS rater using RESNET-accredited rating software, rated feature and specification data derived from home plans, features and specifications, and other data selected or assumed by the rater. The projected HERS index is approximate and is subject to change without notice. Actual results will vary.