

THE IVY

Approx. 2,880 sq. ft. | 2 stories | 4-6 bedrooms | 2-car garage | Plan #P288



ELEVATION C

ABOUT THE IVY

The Ivy plan offers the space of a traditional home, plus a separate suite that includes a living room, kitchenette and private entry. The main home has an open dining room, a spacious great room and a well-appointed kitchen with a center island, walk-in pantry and optional gourmet features. Upstairs, enjoy a convenient laundry, a versatile loft and three generous bedrooms, including a lavish master suite with an oversized walk-in closet and optional deluxe bath. Additional personalization options include a master retreat, extra bedrooms and a second covered patio.



ELEVATION A



ELEVATION B

MAIN FLOOR



THIS PLAN'S PROJECTED
HERS® INDEX = 61 *

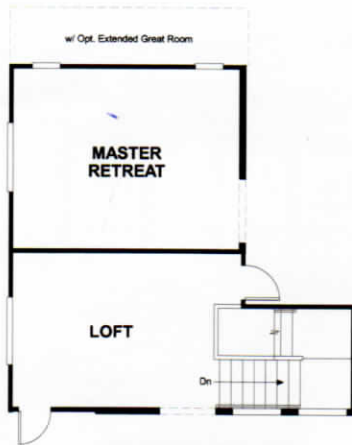
Projected Rating Based on Plans – Field Confirmation required

How does this floor plan rate?

Take a look: **100** = Standard new home+ **130** = Typical resale Home**

The lower number, the better! Refer to the RESNET® HERS index brochure or go to www.RESNET.us and www.HERSindex.com

SECOND FLOOR



OPT. MASTER BEDROOM RETREAT



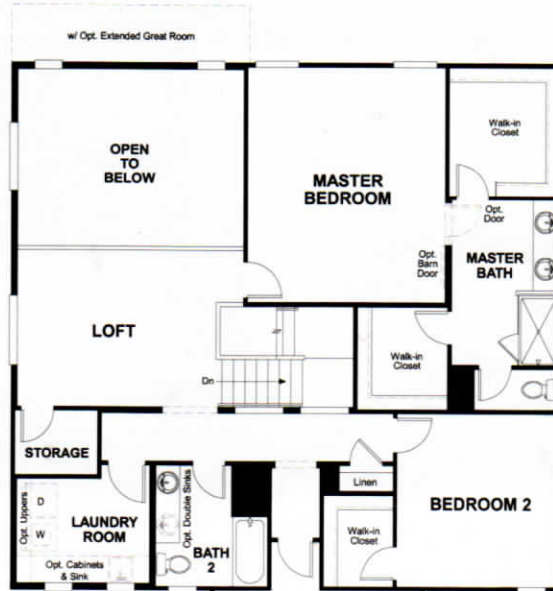
OPT. BEDROOM 6/BATH 5



OPT. EXTENDED LOFT



OPT. BEDROOM 6/BATH 5
W/ OPT. EXT. GREAT ROOM



OPT. BEDROOM 5



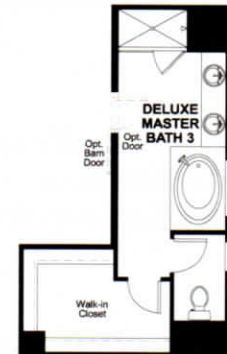
OPT. BATH 4



OPT. DELUXE
MASTER BATH #1



OPT. DELUXE
MASTER BATH #2



OPT. DELUXE
MASTER BATH #3

What's a HERS® Index? HERS stands for Home Energy Rating System, a system created by RESNET® to measure home energy efficiency.[^] A Projected HERS index or rating is a computer simulation performed prior to construction by a third-party HERS rater using RESNET-accredited rating software, rated feature and specification data derived from home plans, features and specifications, and other data selected or assumed by the rater. The projected HERS index is approximate and is subject to change without notice. Actual results will vary.