



CALATLANTIC HOMES™

VICTORY AT VERRADO

Nandina - Plan 3571 | 2-3 Bedroom | 2-3 Bath | 2 Car Garage | 1,870 sq. ft.



Spanish Colonial A



Craftsman B



Western Farmhouse D



CALATLANTIC
HOMES™

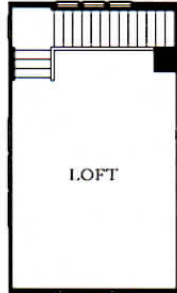
CalAtlanticHomes.com



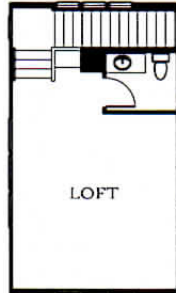
Square footage shown is only an estimate and actual square footage will differ. Buyer should rely on his or her own evaluation of useable area. Prices, plans and terms are effective on the date of publication and subject to change without notice. Depictions of homes or other features are artist conceptions. Hardscape, landscape and other items shown may be decorator suggestions that are not included in the purchase price and availability may vary. Floorplans are the property of CalAtlantic Homes and may not be reproduced without the written agreement of CalAtlantic Homes. CalAtlantic Homes of Arizona, Inc. Construction by: HSP Arizona, Inc., ROC144869A, ROC138431B, ROC242267B-2. A public report is available on the Arizona Department of Real Estate's website.



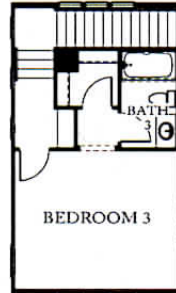
Nandina - Plan 3571 | 2-3 Bedroom | 2-3 Bath | 2 Car Garage | 1,870 sq. ft.



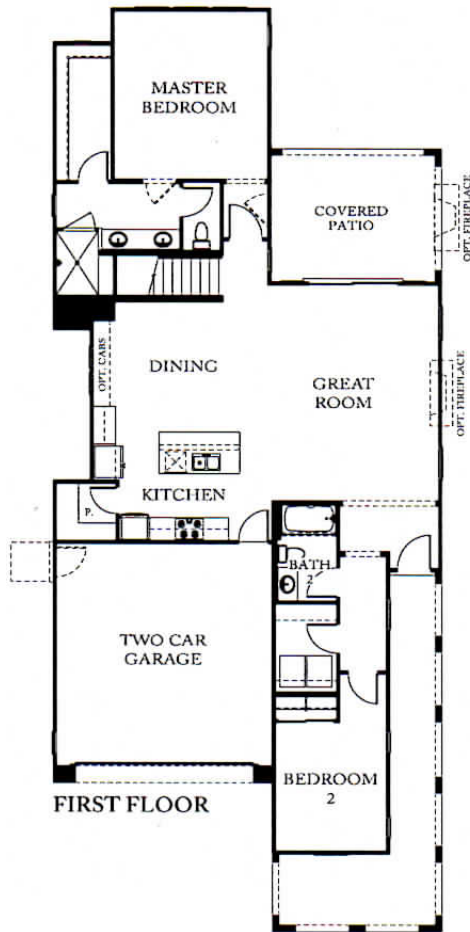
SECOND FLOOR



OPT. POWDER



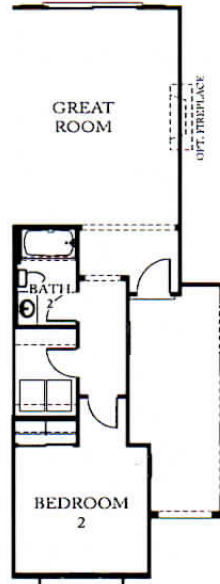
OPT. BEDROOM 3
W/ BATH 3



FIRST FLOOR



OPT. 12' SLIDING
GLASS DOOR



OPT. EXTENDED PORCH
AT CORNER LOT

