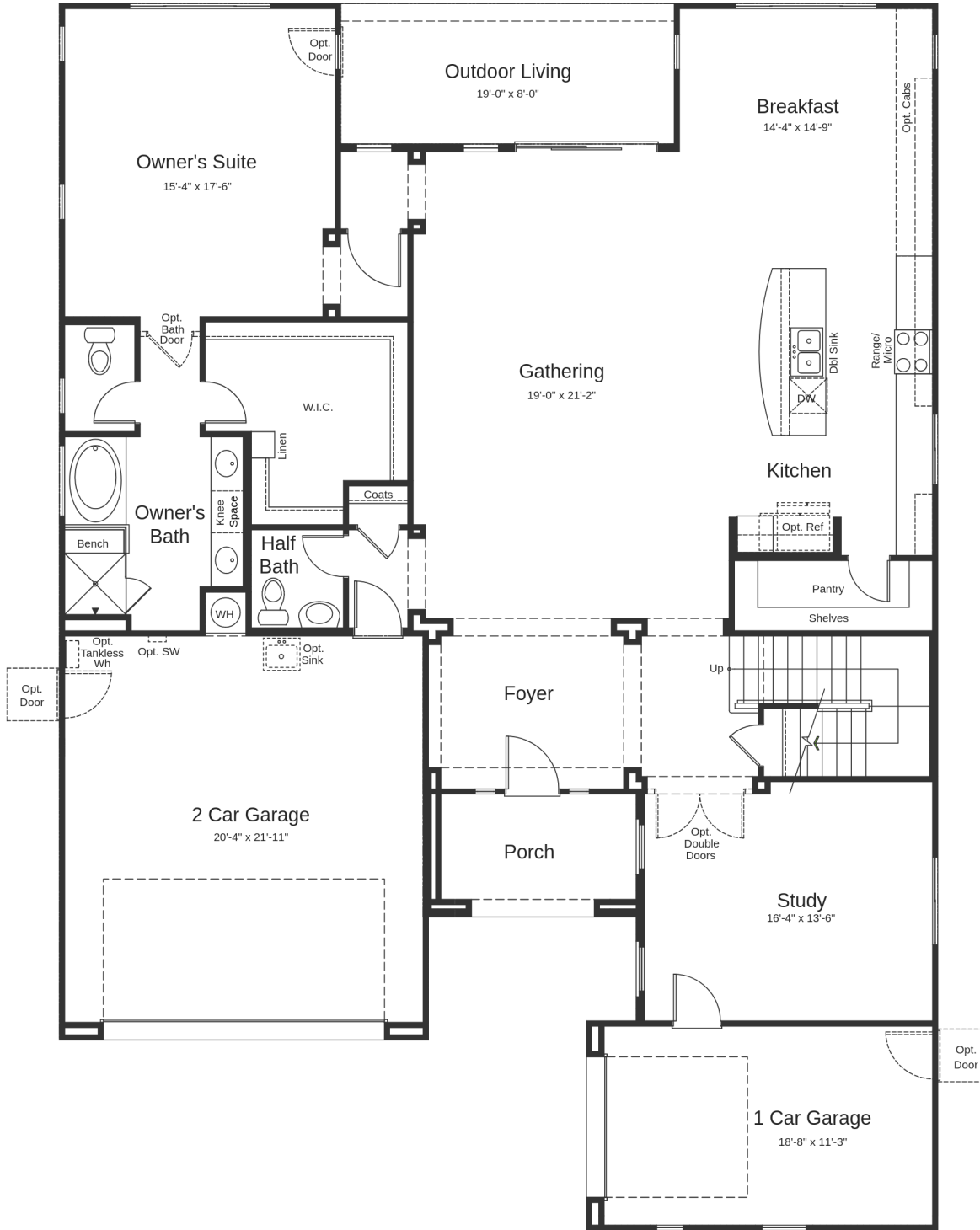


PLAN POWELL (3,967 SQ. FT. | 2 FLOORS | 5-7 BEDS | 3.5-4.5 BATH | 2-3-CAR GARAGE )



## Elevation A - Spanish

**PLAN POWELL** (3,967 SQ. FT. | 2 FLOORS | 5-7 BEDS | 3.5-4.5 BATH | 2-3-CAR GARAGE )



**PLAN POWELL** (3,967 SQ. FT. | 2 FLOORS | 5-7 BEDS | 3.5-4.5 BATH | 2-3-CAR GARAGE )

