

THE PEARL

Approx. 2,360 sq. ft. | 2 stories | 3-5 bedrooms | 2-car garage | Plan #P913



ELEVATION C

ABOUT THE PEARL

The Pearl plan offers two stories of thoughtful living space. A spacious kitchen provides a panoramic view of the main floor—overlooking an elegant dining room, a covered patio and a large great room. You'll also enjoy a convenient powder room and private study located by the entryway. Upstairs, an open loft features access to a laundry room and three bedrooms, including a lavish master suite with a roomy walk-in closet and attached bath. Options include bedrooms in lieu of the loft and study.

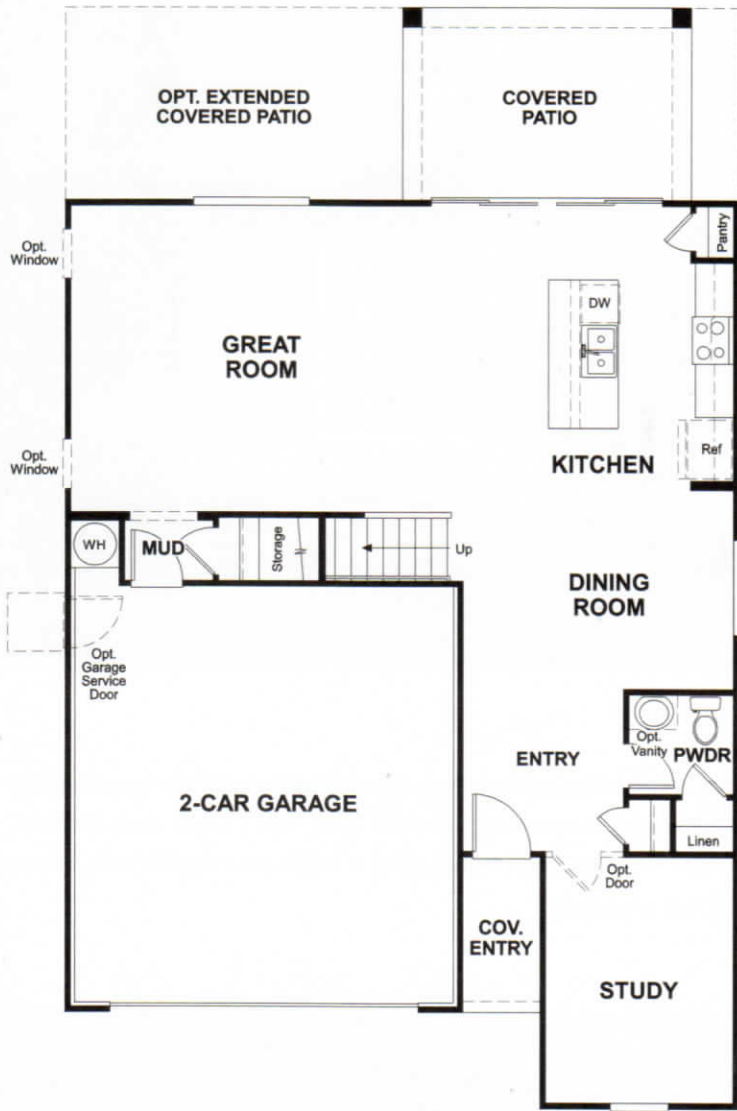


ELEVATION A



ELEVATION B - SHOWN W/OPT. STONE

MAIN FLOOR



THIS PLAN'S PROJECTED
HERS® INDEX = 64*
 Projected Rating Based on Plans – Field Confirmation required

How does this floor plan rate?

Take a look: **100** = Standard new home+ **130** = Typical resale Home++
 The lower number, the better! Refer to the RESNET® HERS index brochure or go to www.RESNET.us and www.HERSindex.com

SECOND FLOOR



What's a HERS® Index? HERS stands for Home Energy Rating System, a system created by RESNET® to measure home energy efficiency.[^] A Projected HERS index or rating is a computer simulation performed prior to construction by a third-party HERS rater using RESNET-accredited rating software, rated feature and specification data derived from home plans, features and specifications, and other data selected or assumed by the rater. The projected HERS index is approximate and is subject to change without notice. Actual results will vary.