

Plan 1482

3 Bedrooms and 2 Baths, 2 Car Garage

1,482 square feet



Elevation A



Elevation B



Elevation C

Walk into the Bisbee and discover formal dining to the right adjoining a gourmet kitchen with pantry. The connected great room allows for the chef to interact with guests, making this plan great for entertaining. A sliding glass door leads to a covered patio and backyard. The remote master suite features a walk-in closet and master bath with large shower and dual sinks. Two secondary bedrooms are conveniently located near the indoor laundry room.

The Bisbee features superior energy efficiency with state-of-the-art, energy-efficient construction, appliances and lighting. This means lower energy bills and environmental sustainability.

Pick up a copy of the Avanti Series at Granite Vista features list for a complete overview of the superior products that are included, and see how Elliott builds your home to be friendlier to the environment and your pocketbook.

# THE BISBEE

**Elliott Homes**

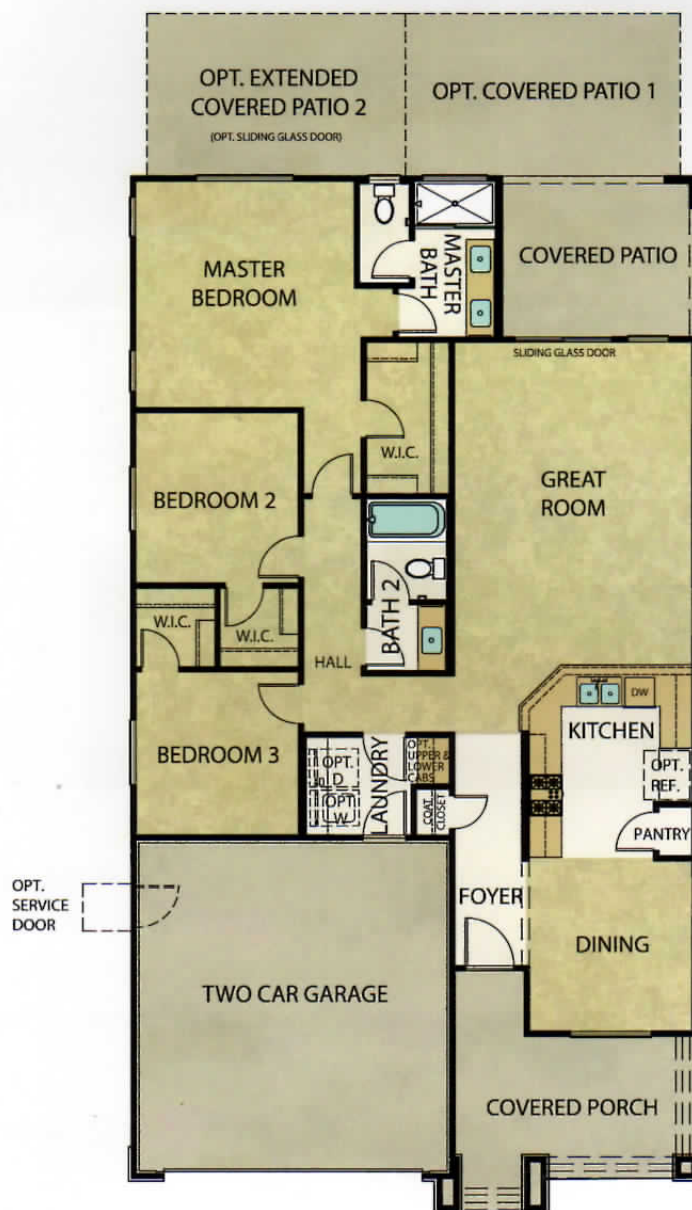
1914 Celebrating 100 years 2014

Plan 1482

ElliottHomes.com



3 Bedrooms and 2 Baths, 2 Car Garage  
1,482 square feet



Tile Flooring

**GRANITE VISTA**

AN H.C. ELLIOTT COMMUNITY  
AVANTI SERIES

17170 W. Las Palmaritas Drive  
Waddell, AZ 85355  
Ph: 623-217-2670 | Toll Free: 800-481-0352  
Email: j.supanchis@elliotthomes.com



ROC#51293

Square footage figures are approximate. Elliott Homes reserves the right to substitute or change without notice, equipment, materials, appliances, features, amenities, floor plans, site plans, assessment and fees, planned amenities, conceptual artists renderings, photos and community development plans. Special features and decorator items in model homes are not included (wallpaper, mirrors, wall treatments, furniture and special walk-finishing). Option prices are subject to change prior to homebuyer selection. See sales representative for further information and visit [elliotthomes.com](http://elliotthomes.com).

9/9/16