

SAVANNAH

Coming Soon
Est. Mortgage undefined


(623) 399-4787




OVERVIEW

 Litchfield Park, AZ

 4 Bedrooms

 2,414–2,427 Sq. Ft.

 From \$360s - \$540s

 2.5 Bathrooms

The Savannah is a single-story plan featuring a foyer that creates an inviting space to welcome guests into your home. The thoughtfully-designed kitchen opens to the great room and breakfast room, providing a place to prepare meals, host a dinner party, or enjoy a perfect weekend brunch.

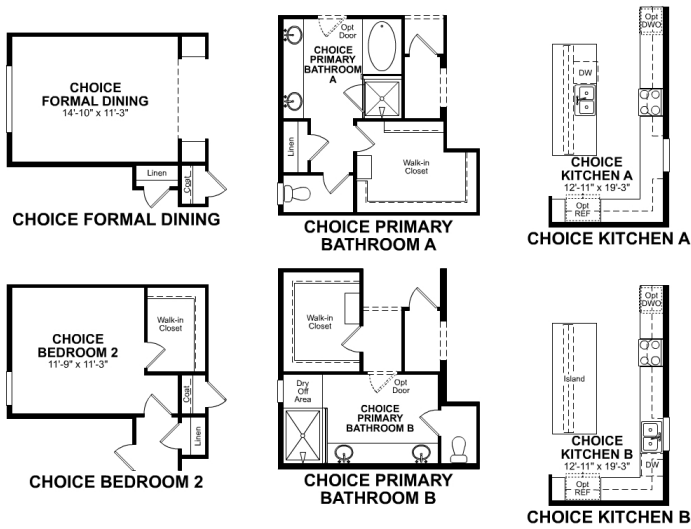
FLOORPLAN

1st Floor

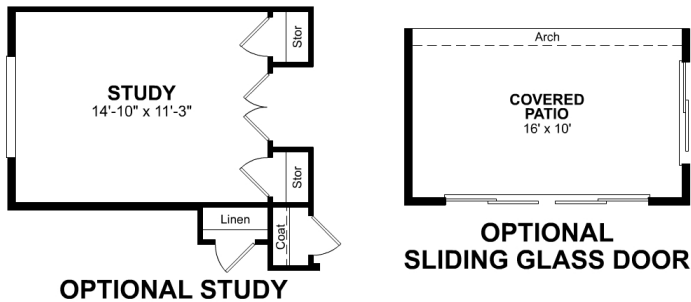
Base Floorplan



Room Choices Floorplan



Paid Options Floorplan



DETAILS AND FEATURES

- Breakfast room designed for optimal light and exterior views to the backyard

- Primary suite separated from secondary bedrooms to create privacy and reduce noise
- Located at the entry point from the garage, the laundry room can be used to drop off items or to clean off before entering
- Living areas designed to be open while still giving you privacy in formal areas