

Tuscano
YORKTOWN



Elevation A

Available elevations:



Elevation B



Elevation C

Approx. square feet: 2,910

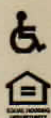
Stories: 2

Bedrooms: 4 - 5

Garage: 2- to 3-car

Plan Number: P725

The main floor of the Yorktown was designed for entertaining, offering an expansive great room with optional fireplace, an open dining room overlooking a covered patio and backyard and a well-appointed kitchen with a large center island. The 3-car garage leads to a convenient mudroom with walk-in closet, a powder room and a private study. On the second floor, there's an immense loft surrounded by three bedrooms, a shared bath, a laundry room and a master suite with its own bath and spacious walk-in closet. Options include a sunroom, extra bedrooms and a deluxe bath.



COMMUNITY LOCATION

8008 West Pueblo Avenue
Phoenix, AZ 85043
480-624-0244

HOME GALLERY

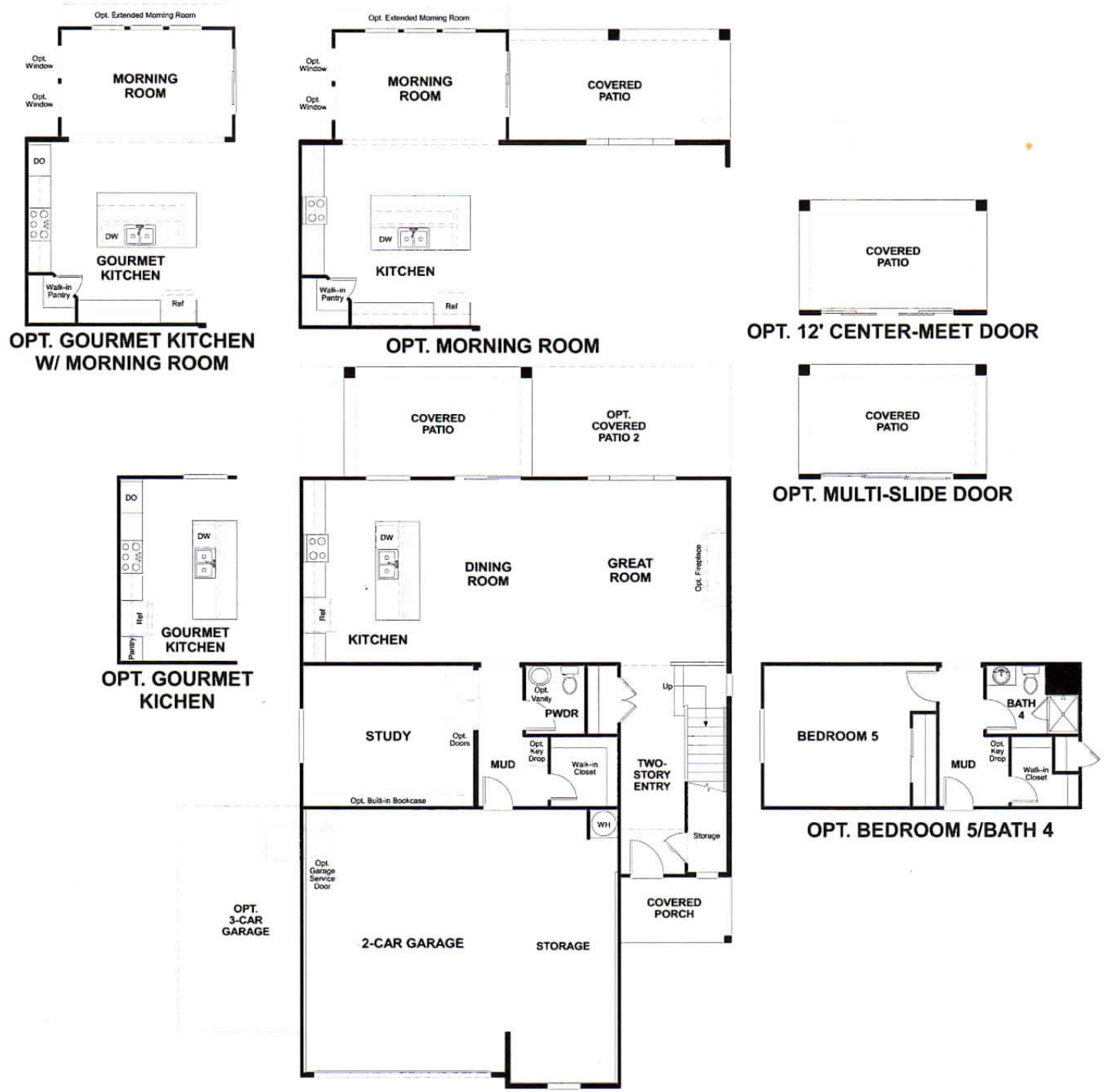
16427 North Scottsdale Road, Suite 175
Scottsdale, AZ 85254
877-748-4822

Tuscano
YORKTOWN

Approx. square feet: 2,910
Stories: 2
Bedrooms: 4 - 5

Garage: 2- to 3-car
Plan Number: P725

Floor Plan
Main Floor

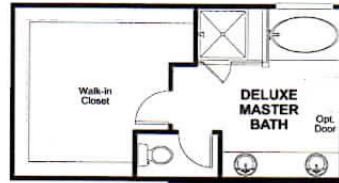


THIS PLAN'S PROJECTED HERS® INDEX = 62*
Projected Rating Based on Plans – Field Confirmation Required

How does this floor plan rate?
Take a look: 100 = Standard new home* 130 = Typical resale home**
The lower the number, the better! Refer to the RESNET® HERS index brochure or go to www.RESNET.us for details.

*This information is presented for education purposes only. The HERS index for a confirmed rating will be determined by a third-party HERS rater based on data gathered from on-site observations and, if required, testing of rated features for a home as featured, optioned, located, oriented and/or built.
+Standard new home is based on the RESNET® Reference Home definition with a HERS® index of 100 (based on the 2006 International Energy Conservation Code).
++Typical resale home is based on the U.S. Department of Energy definition with a HERS® index of 130.

Floor Plan
Second Floor



OPT. DELUXE MASTER BATH 1



OPT. DELUXE MASTER BATH 2



OPT. BATH 3



What's a HERS® Index? HERS stands for Home Energy Rating System, a system created by RESNET® to measure home energy efficiency.[^] A Projected HERS index or rating is a computer simulation performed prior to construction by a third-party HERS rater using RESNET-accredited rating software, rated feature and specification data derived from home plans, features and specifications, and other data selected or assumed by the rater. The projected HERS index is approximate and is subject to change without notice. Actual results will vary.

[^]RESNET® has developed the HERS® index to indicate the comparative efficiencies of homes. It is no guarantee that energy efficiencies will be achieved.