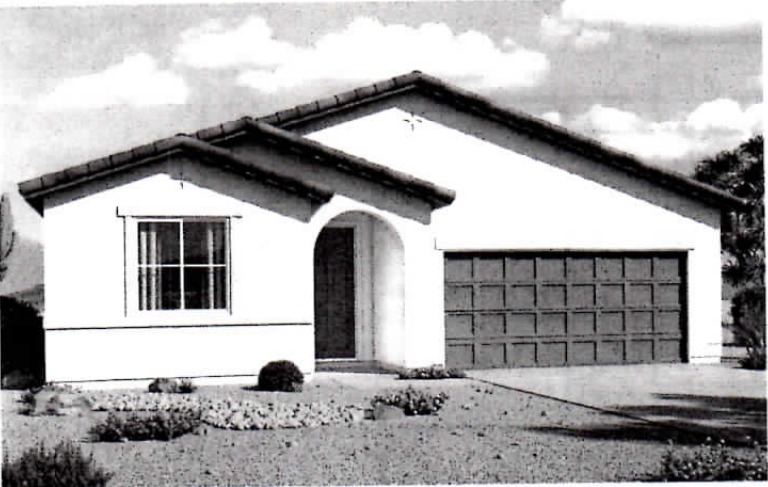


Tuscano
RALEIGH

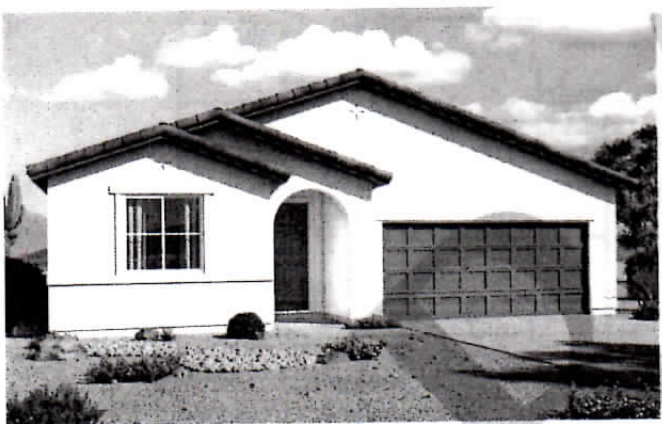


Elevation A

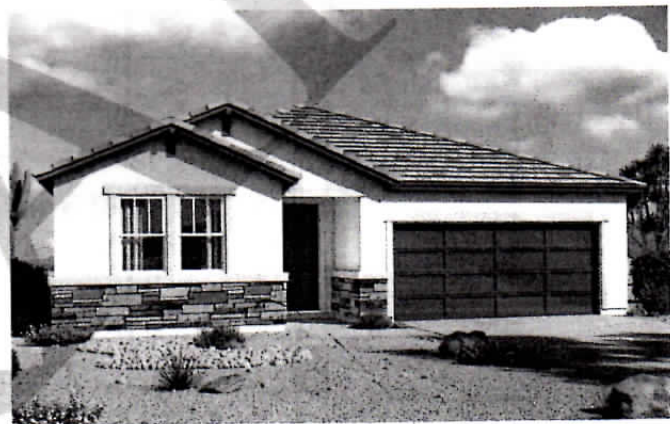
Approx. square feet: 2,200
Stories: 1
Bedrooms: 3 - 4 *5*
Garage: 2- to 3-car
Plan Number: P741

You'll find plenty to love about the Raleigh plan, a versatile ranch-style home with a number of personalization options. Located off the entryway, a spacious study can also be optioned as a dining room, an extra bedroom and even a guest suite with a full bath and walk-in closet. The center of the home boasts a large kitchen with a convenient center island and walk-in pantry. The kitchen flows into an open-concept dining room and great room, which offers direct access to an inviting covered patio. From the great room, you can also make your way to two secondary bedrooms, as well as a secluded master suite with a private bath and walk-in closet. Additional options include a fifth bedroom in lieu of garage storage space, a gourmet kitchen with a butler's pantry or tech center, and two deluxe master bath layouts.

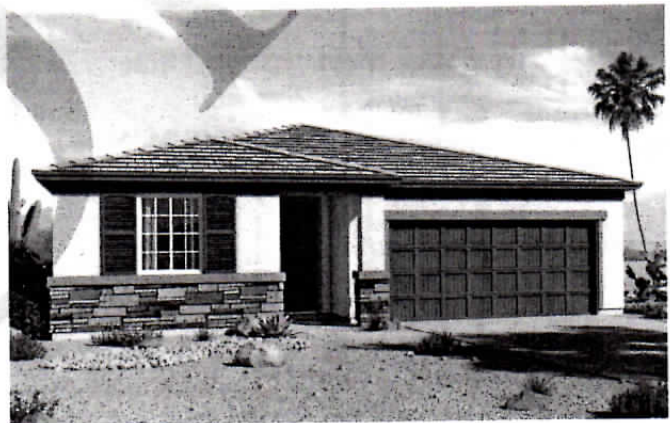
Available elevations:



Elevation A



Elevation B



Elevation C

opt stone



COMMUNITY LOCATION
 8008 West Pueblo Avenue
 Phoenix, AZ 85043
 480-624-0244

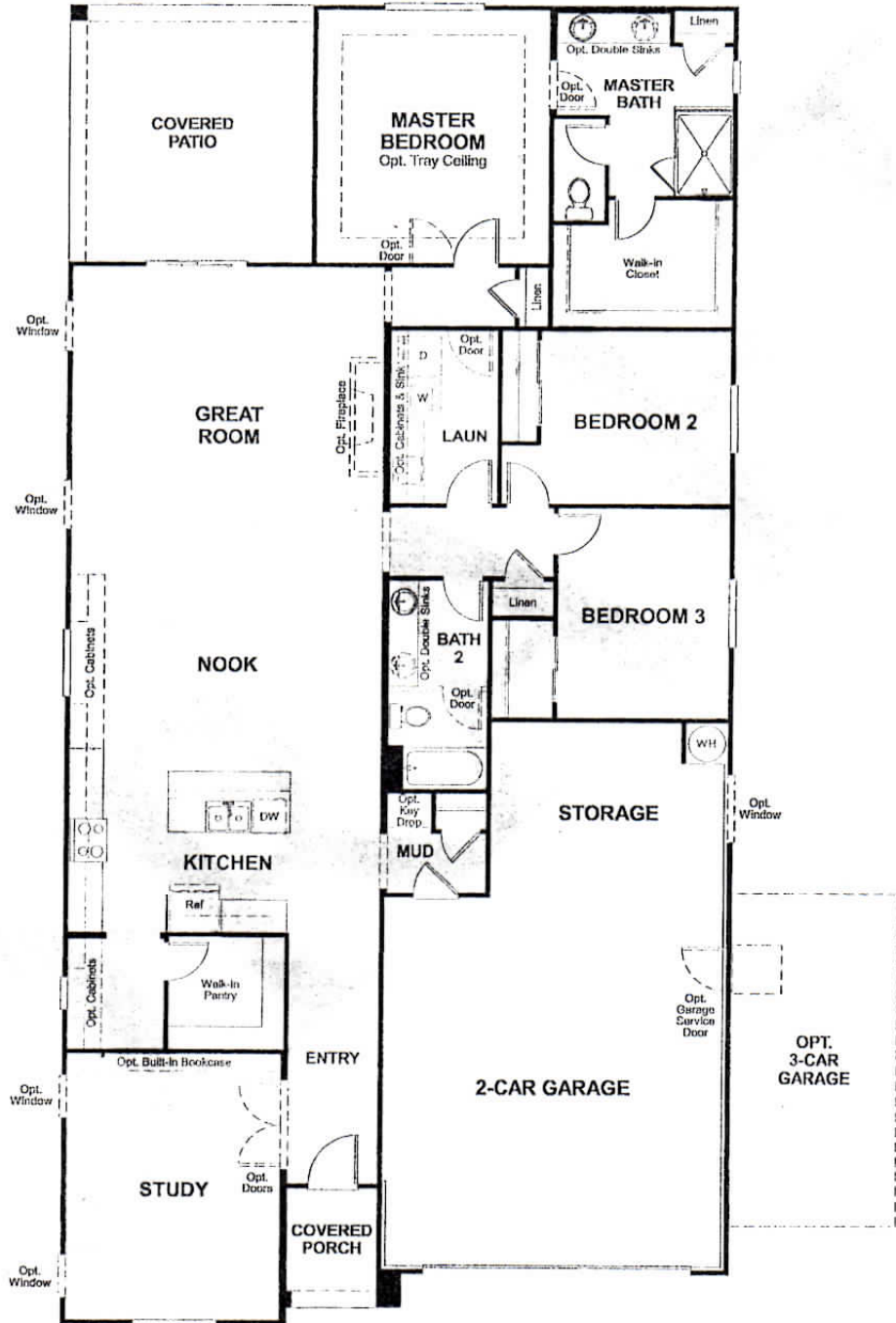
HOME GALLERY
 16427 North Scottsdale Road, Suite 175
 Scottsdale, AZ 85254
 877-748-4822

Tuscano
RALEIGH

Approx. square feet: 2,200
Stories: 1
Bedrooms: 3 - 4

Garage: 2- to 3-car
Plan Number: P741

Floor Plan
Main Floor



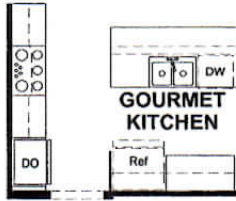
**THIS PLAN'S PROJECTED
HERS® INDEX = 64***
Projected Rating Based on Plans – Field Confirmation Required

How does this floor plan rate?
Take a look: 100 = Standard new home* 130 = Typical resale home**
The lower the number, the better! Refer to the RESNET® HERS index brochure or go to www.RESNET.us for details.

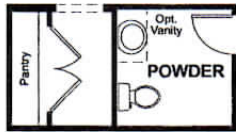
* This information is presented for education purposes only. The HERS index for a confirmed rating will be determined by a third-party HERS rater based on data gathered from on-site observations and, if required, testing of rated feature a home as featured, optioned, located, oriented and/or built.
** Standard new home is based on the RESNET® Reference Home definition with a HERS® index of 100 (based on the 2006 International Energy Conservation Code).
*** Resale home is based on the U.S. Department of Energy definition with a HERS® index of 130.

Floor Plan

Main Floor Options



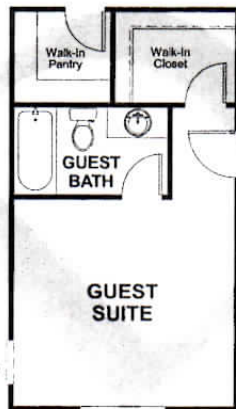
OPT. GOURMET KITCHEN



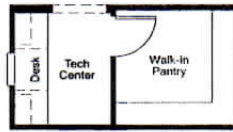
OPT. POWDER



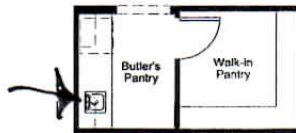
OPT. BEDROOM 4/BATH 3



OPT. GUEST SUITE



OPT. TECH CENTER



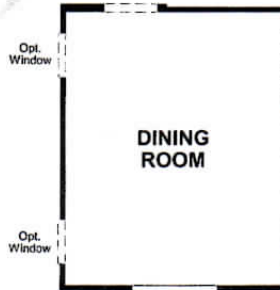
OPT. BUTLER'S PANTRY



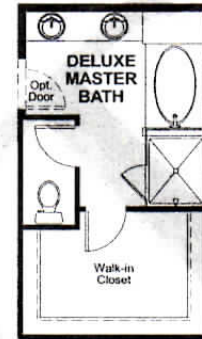
OPT. MULTI-SLIDE DOOR



OPT. 12' CENTER-MEET DOOR



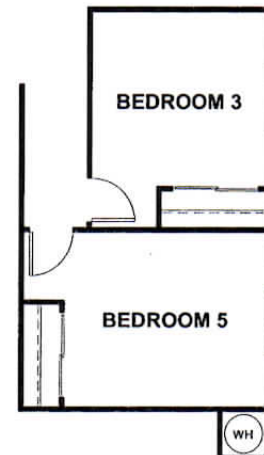
OPT. DINING ROOM



OPT. DELUXE MASTER BATH 1



OPT. DELUXE MASTER BATH 2



OPT. BEDROOM 5

What's a HERS® Index? HERS stands for Home Energy Rating System, a system created by RESNET® to measure home energy efficiency. A Projected HERS index or rating is a computer simulation performed prior to construction by a third-party HERS rater using RESNET-accredited rating software, rated feature and specification data derived from home plans, features and specifications, and other data selected or assumed by the rater. The projected HERS index is approximate and is subject to change without notice. Actual results will vary.

RESNET® has developed the HERS® index to indicate the comparative efficiencies of homes. It is no guarantee that energy efficiencies will be achieved.