

# THE DARIUS

Approx. 2,830 sq. ft. | 1 story | 4 bedrooms | 3-car garage | Plan #P786



ELEVATION C

## ABOUT THE DARIUS

Part of the Modern Living™ Collection, the Darius provides a sophisticated and accommodating ranch-style layout. In addition to a lavish master suite—with a roomy walk-in closet and attached double-sink bath—this home includes a second master suite with an adjacent living room, perfect for multi-generational living. For a more complete secondary residence, opt for a separate entrance to the living room on the side of the house, in addition to a kitchenette with a sink, refrigerator and cabinets. You'll also enjoy a 3-car garage, a study, a great room with an adjacent covered patio—featuring optional center-meet and multi-slide doors—and an inviting kitchen with a generous island, built-in pantry, dining nook and optional gourmet features. Additional options: formal dining room, master retreat, club room, deluxe master bath.

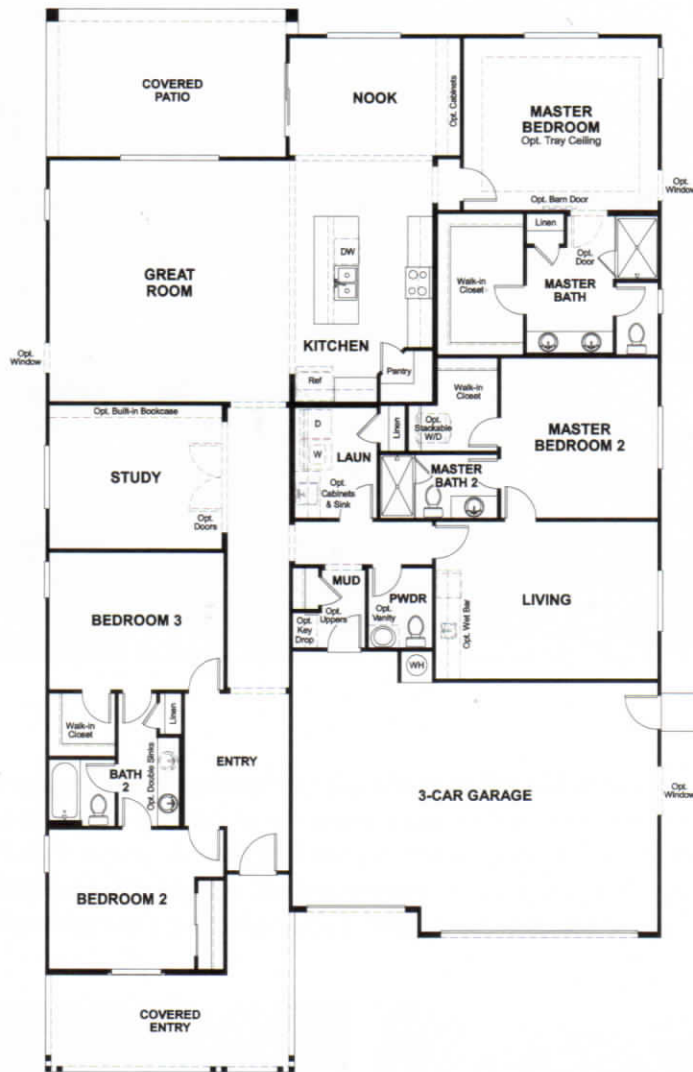


ELEVATION A



ELEVATION B

MAIN FLOOR



THIS PLAN'S PROJECTED  
**HERS® INDEX = 68\***

Projected Rating Based on Plans – Field Confirmation required

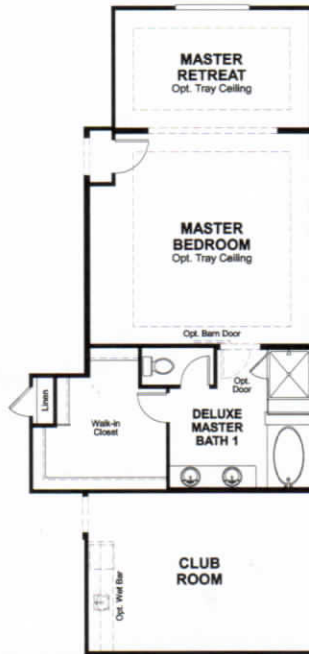
**How does this floor plan rate?**

Take a look: **100** = Standard new home+ **130** = Typical resale Home++  
 The lower number, the better! Refer to the RESNET® HERS index brochure or go to [www.RESNET.us](http://www.RESNET.us) and [www.HERSindex.com](http://www.HERSindex.com)

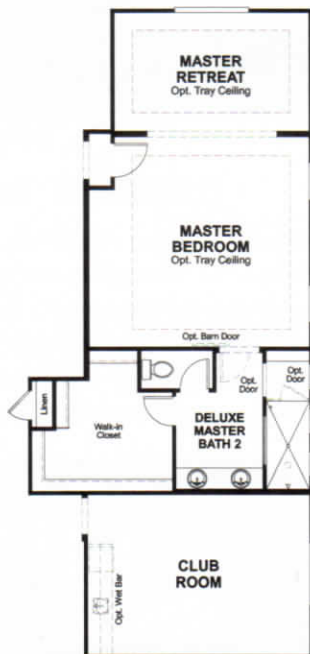
MAIN FLOOR OPTIONS



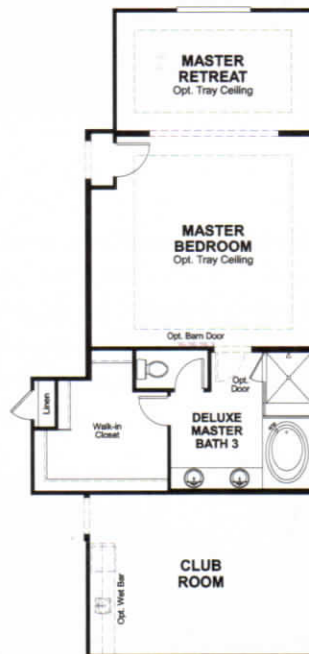
OPT. MASTER RETREAT/  
CLUB ROOM



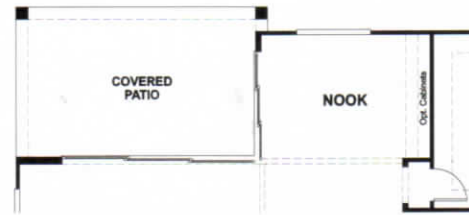
OPT. DELUXE MASTER BATH #1  
W/ MASTER RETREAT



OPT. DELUXE MASTER BATH #2  
W/ MASTER RETREAT



OPT. DELUXE MASTER BATH #3  
W/ MASTER RETREAT



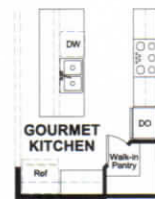
OPT. CORNER MEET AT GREAT ROOM



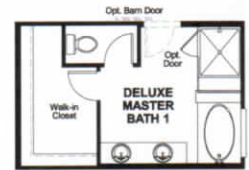
OPT. CENTER MEET DOOR  
AT GREAT ROOM



OPT. MULTI-SLIDE DOOR  
AT GREAT ROOM



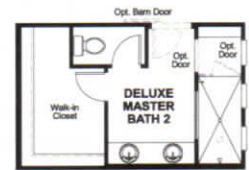
OPT. GOURMET  
KITCHEN



OPT. DELUXE  
MASTER BATH #1



OPT. DINING ROOM



OPT. DELUXE  
MASTER BATH #2



OPT. ENTRY AT LIVING



OPT. DELUXE  
MASTER BATH #3

**What's a HERS® Index?** HERS stands for Home Energy Rating System, a system created by RESNET® to measure home energy efficiency. A Projected HERS index or rating is a computer simulation performed prior to construction by a third-party HERS rater using RESNET-accredited rating software, rated feature and specification data derived from home plans, features and specifications, and other data selected or assumed by the rater. The projected HERS index is approximate and is subject to change without notice. Actual results will vary.