

THE JULIA

Approx. 2,730 sq. ft. | 1 story | 3-4 bedrooms | 3-car garage | Plan #P27



ELEVATION C

ABOUT THE JULIA

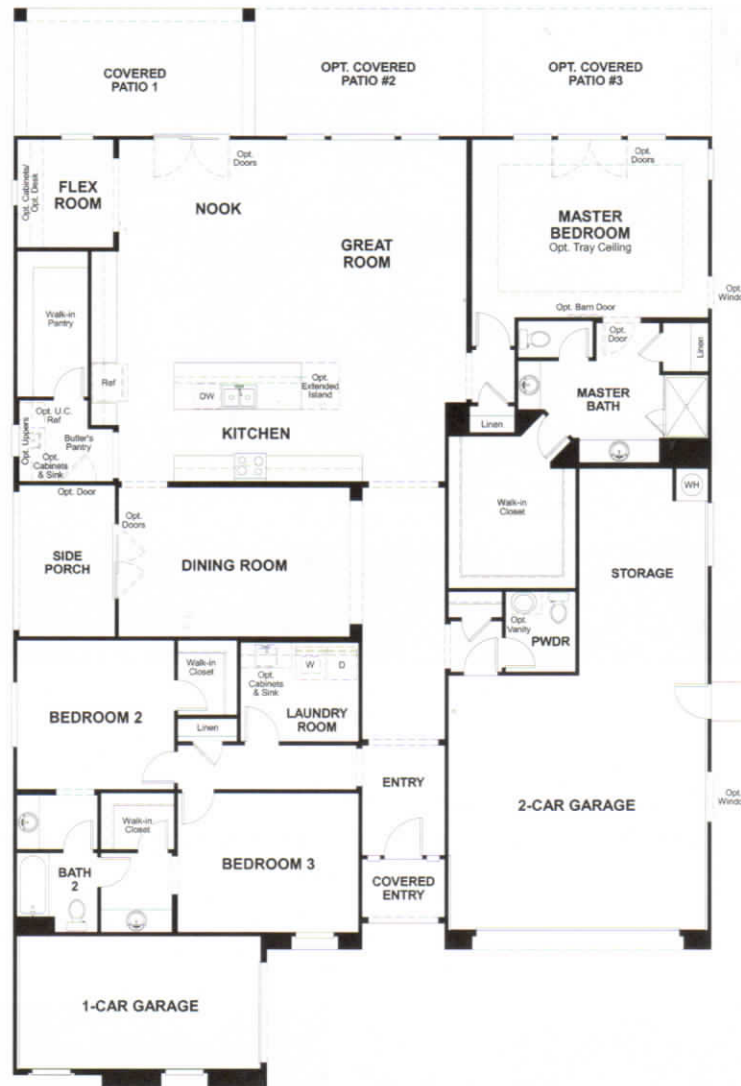
The ranch-style Julia plan greets guests with a charming covered front porch. Once inside, an extended entry leads to an expansive kitchen with a center island, walk-in pantry, breakfast nook and separate prep kitchen for entertaining. You'll also appreciate the inviting great room, tech center and formal dining room with adjacent covered courtyard.



ELEVATION A



ELEVATION B



THIS PLAN'S PROJECTED
HERS® INDEX = 69*

Projected Rating Based on Plans – Field Confirmation required

How does this floor plan rate?

Take a look: **100** = Standard new home+ **130** = Typical resale Home**

The lower number, the better! Refer to the RESNET® HERS index brochure or go to www.RESNET.us and www.HERSindex.com

MAIN FLOOR OPTIONS

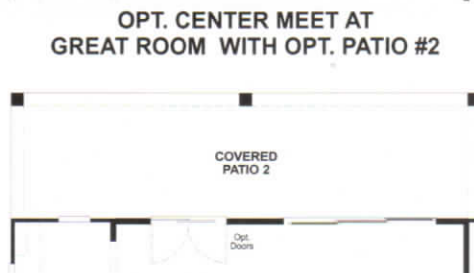
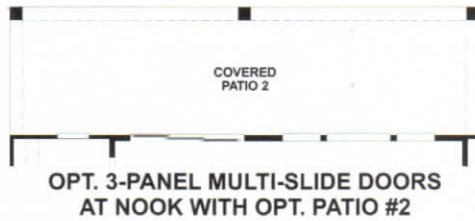
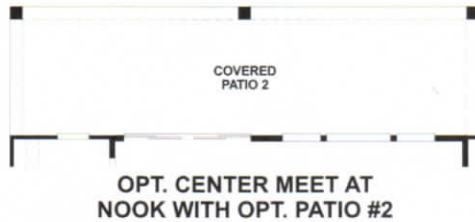
COVERED PATIO 3
OPT. 3-PANEL MULTI-SLIDE DOORS AT MASTER BEDROOM WITH OPT. PATIO #3



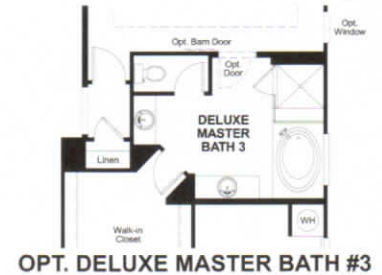
OPT. 10' CENTER-MEET DOOR AT DINING ROOM



OPT. BEDROOM 4 W/ BATH 3



OPT. NICHE AT DINING ROOM



OPT. DELUXE MASTER BATH #3



OPT. POOL BATH



OPT. DELUXE MASTER BATH #1



OPT. DELUXE MASTER BATH #2

What's a HERS® Index? HERS stands for Home Energy Rating System, a system created by RESNET® to measure home energy efficiency.®

A Projected HERS index or rating is a computer simulation performed prior to construction by a third-party HERS rater using RESNET-accredited rating software, rated feature and specification data derived from home plans, features and specifications, and other data selected or assumed by the rater. The projected HERS index is approximate and is subject to change without notice. Actual results will vary.