

LIVE.NOW.

MOVE SOONER. LIVE BETTER. WHY WAIT?

MeritageHomes®

Setting the standard for energy-efficient homes™

Sienna Hills | Aden

1,613 sq. ft. | 3 Bed | 2 Bath | 2 Car Garage | 1 Story

Beautiful well-designed home that offers 3 bedrooms and 2 baths, plus a great room and dining area, all within its 1,613 sq. ft. The master suite is located at the back of the home for privacy.



Elevation C



Elevation A



Elevation B



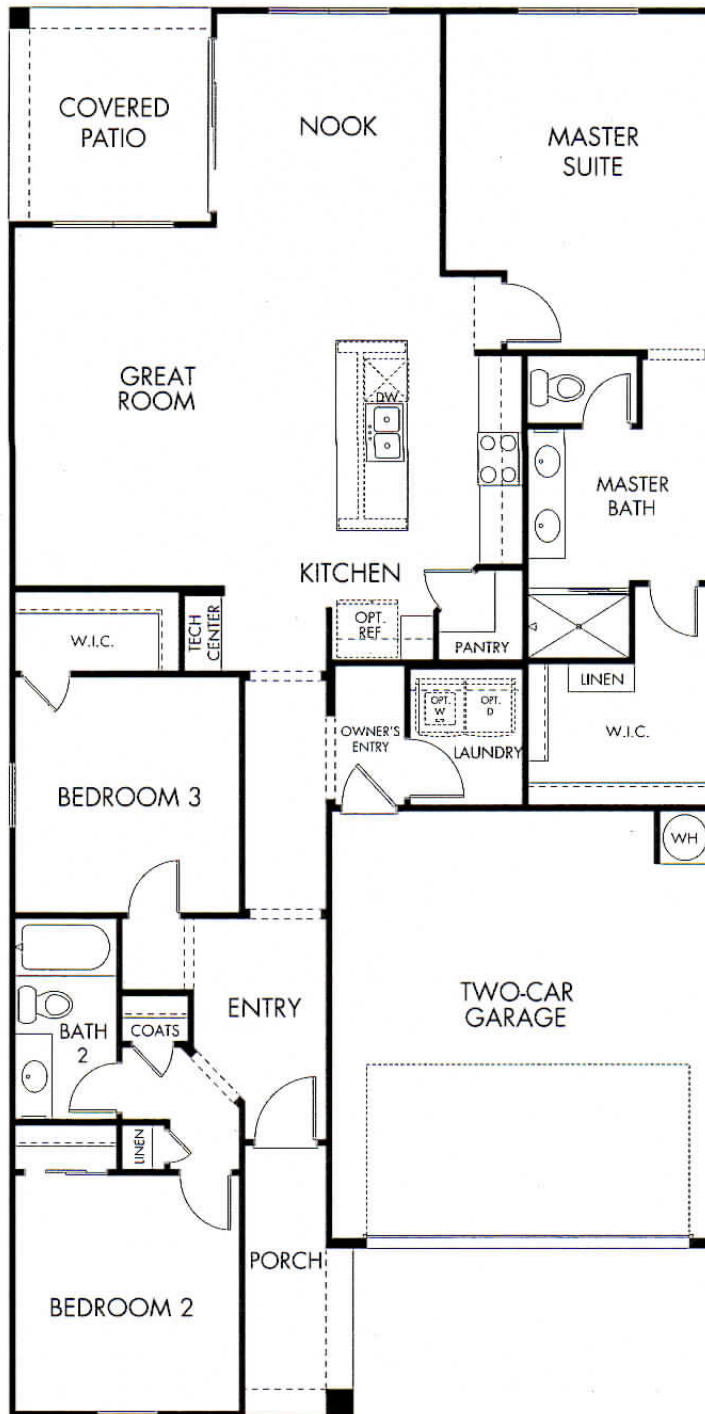
877-275-6374
MERITAGEHOMES.COM

LIVE.NOW.

MOVE SOONER. LIVE BETTER. WHY WAIT?

MeritageHomes®

Setting the standard for energy-efficient homes®

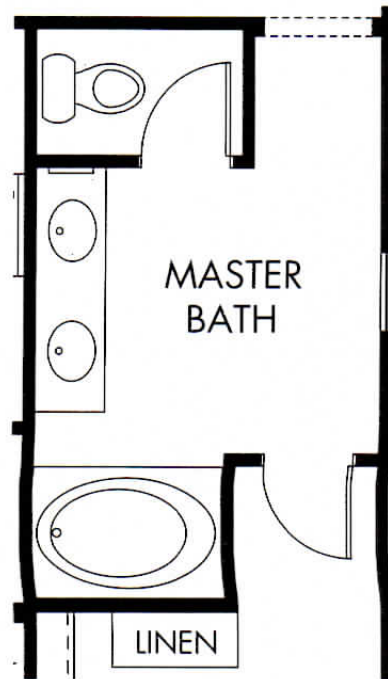


Sienna Hills | Aden

1,613 sq. ft. | 3 Bed | 2 Bath | 2 Car Garage | 1 Story



877-275-6374
MERITAGEHOMES.COM



OPT. MASTER BATH

Sienna Hills | Aiden

1,613 sq. ft. | 3 Bed | 2 Bath | 2 Car Garage | 1 Story

This floor plan and/or elevation rendering is an artist's conceptual rendering intended to provide a general overview, but any such rendering does not constitute actual plans and specifications for any home. Renderings and pictures are representative and may depict accessories, elevations, options, upgrades, landscaping, and other features and amenities that are not included as part of all homes, and/or may not be available for all lots and/or in all communities. Renderings may not be drawn to scale. Any provided dimensions are approximate and actual dimensions may vary. Homes may be constructed with a floorplan that is the reverse of the floorplan rendering. Plans are copyrighted and/or otherwise subject to intellectual property rights of Montage and/or others and cannot be reproduced or copied without Montage's prior written consent. Plans and specifications, home features, and community information are subject to change, and homes to prior sale, at any time without notice or obligation. Additionally, deviations and variations may exist in any construction, including, without limitation: (i) substitution of materials and equipment of substantially equal or better quality; (ii) minor scale, lot orientation, and color changes; (iii) minor variances in square footage and in room and space dimensions, and in fixtures, floor, ceiling, and other improvement features; (iv) changes as may be required by any state, federal, county, or local governmental authority in order to accommodate requested exceptions and/or options; and (v) valid engineering and code changes.