

# LIVE.NOW.

MOVE SOONER. LIVE BETTER. WHY WAIT?

MeritageHomes<sup>®</sup>

Setting the standard for energy-efficient homes<sup>™</sup>

## Sienna Hills | Emerson

2,909 sq. ft. | 4 Bed | 2.5 Bath | 3 Car Tandem Garage | 2 Story

This home has four bedrooms, an open floorplan, and a game room upstairs. With a large great room and covered patio just off the kitchen, it has the ideal space for entertaining. Also includes a 3-car garage.



Elevation C



Elevation A



Elevation B



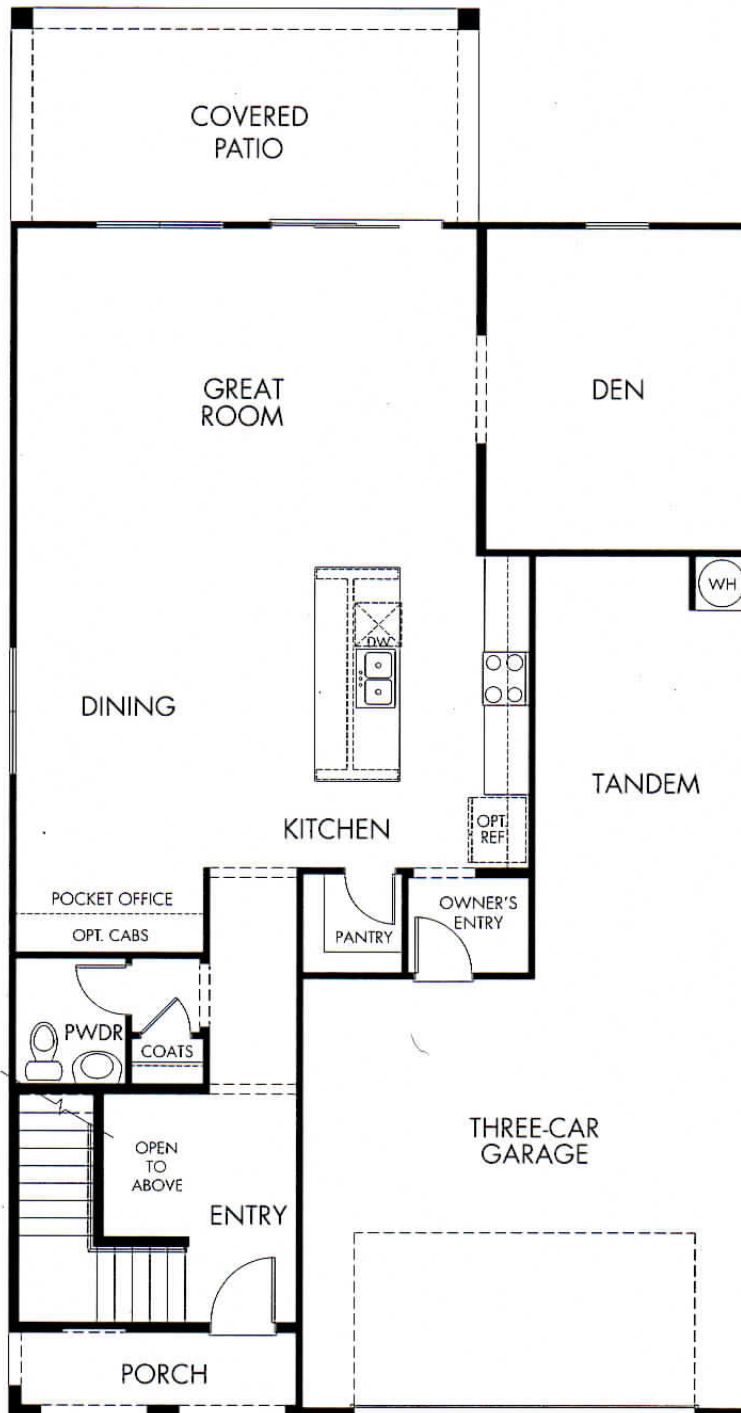
877-275-6374  
MERITAGEHOMES.COM

# LIVE.NOW.

MOVE SOONER. LIVE BETTER. WHY WAIT?

MeritageHomes®

Setting the standard for energy-efficient homes®

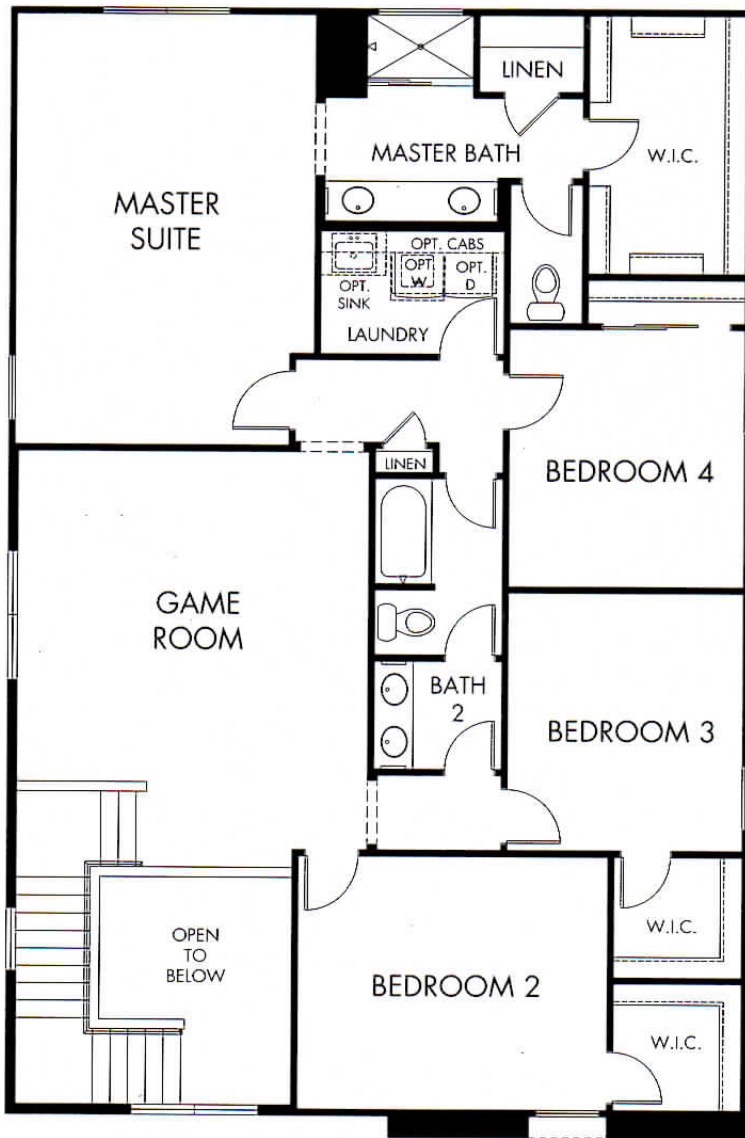


## Sienna Hills | Emerson | First Floor

2,909 sq. ft. | 4 Bed | 2.5 Bath | 3 Car Tandem Garage | 2 Story



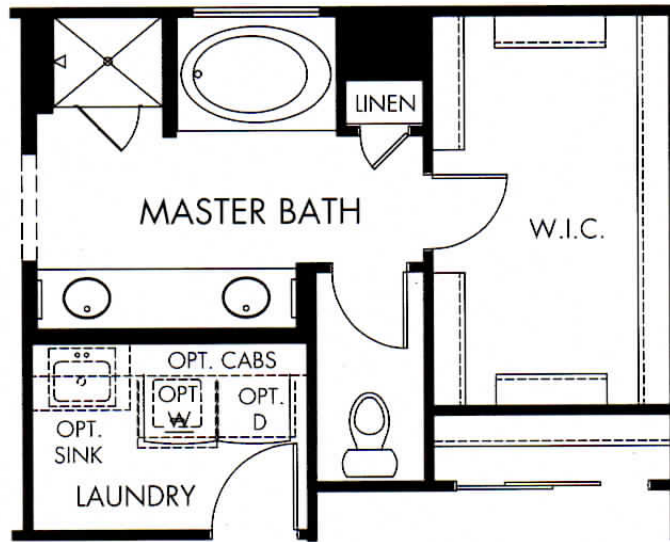
877-275-6374  
MERITAGEHOMES.COM



**Sienna Hills | Emerson | Second Floor**  
**2,909 sq. ft. | 4 Bed | 2.5 Bath | 3 Car Tandem Garage | 2 Story**

This floor plan and/or elevation rendering is an artist's conceptual rendering intended to provide a general overview, but any such rendering does not constitute actual plans and specifications for any home. Renderings and pictures are representative and may depict elevations, elevations, options, upgrades, landscaping, and other features and amenities that are not included as part of all homes and/or may not be available for all lots and/or in all communities. Renderings may not be drawn to scale. Any provided dimensions are approximate and actual dimensions may vary. Homes may be constructed with a floorplan that is the reverse of the floorplan rendering. Plans are copyrighted and/or otherwise subject to intellectual property rights of Mantaga and/or others and cannot be reproduced or copied without Mantaga's prior written consent. Plans and specifications, home features, and community information are subject to change, and homes in prior sale, at any time without notice or obligation. Additionally, deviations and variations may exist in any constructed home, including, without limitation: (i) substitution of materials and equipment of substantially equal or better quality, of similar style, lot orientation, and color changes, (ii) minor variances in square footage and in room and space dimensions, and in window, door, utility outlet, and other improvement locations; (iii) changes as may be required by any state, federal, county, or local governmental authority in order to accommodate requested selections and/or options; and (iv) voice engineering and field changes.





## OPT. MASTER BATH TUB & SHOWER

**Sienna Hills | Emerson | Options**  
**2,909 sq. ft. | 4 Bed | 2.5 Bath | 3 Car Tandem Garage | 2 Story**

Any floor plan and/or elevation rendering is an artist's conceptual rendering intended to provide a general overview, but any such rendering does not constitute actual plans and specifications for any home. Renderings and pictures are representative and may depict floor plan elevations, options, upgrades, landscaping, and other features and amenities that are not included as part of all homes and/or may not be available for all lots and/or in all communities. Renderings may not be drawn to scale. Any provided dimensions are approximate and actual dimensions may vary. Homes may be constructed with a floor plan that is the reverse of the floor plan rendering. Plans are copyrighted and/or otherwise subject to intellectual property rights of Mortgage and/or others and cannot be reproduced or copied without Mortgage's prior written consent. Plans and specifications, home features, and community information are subject to change, and homes to prior sale, at any time without notice or obligation. Additionally, deviations and variations may exist in any constructed home, including, without limitation, in construction materials and equipment of substantially equal or better quality, in minor style, lot orientation, and color changes; in minor variances in square footage and in room and space dimensions, and in window, door, utility codes, and other requirements. Plans and specifications may be required by any state, federal, county, or local governmental authority in order to accommodate requested selections and/or options; and (v) value engineering and field changes.