

**PRELIMINARY**

# STONE CANYON

**PLAN 2348**

2,348 sq. ft. 3 - 4 bedrooms 2 baths 2 car garage



Spanish 'A'



Southern Italian 'B'



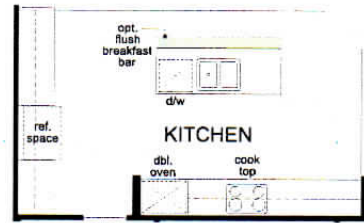
Hacienda 'C'

**PRELIMINARY**

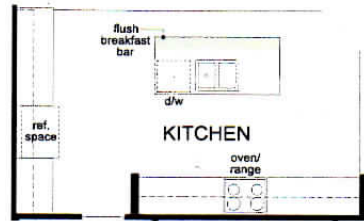


**Floor Options**

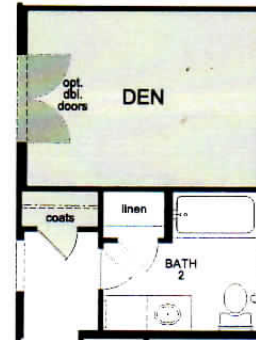
- Kitchen:**
  - Gourmet kitchen, Luxury kitchen
- Great Room:**
  - Double doors, 9' Multi-slide doors, Extended covered patio, 15' Multi-slide doors (with extended covered patio only),
- Bedroom 4:**
  - Den
- Den:**
  - Double doors
- Master Bedroom:**
  - Coffered ceiling (available with 9' plate option only), Sliding glass door, Double doors
- Master Bath:**
  - Door, Super master bath, Full shower, Garden tub, Extended vanity
- Bath 2:**
  - Dual sinks, Full shower
- Laundry:**
  - Base cabinets, Upper cabinets, Sink



**gourmet kitchen**



**luxury kitchen**



**bedroom 4 at den**



**dual sinks at bath 2**



**full shower at bath 2**



Your new KB home can be built to order so you'll enjoy the features you want most. Plus you can choose from a variety of personalizing interior features and details at KB Home Studio. Select appliances, cabinets, countertops, lighting, flooring, and more. Everything you need to create a home as unique as you.

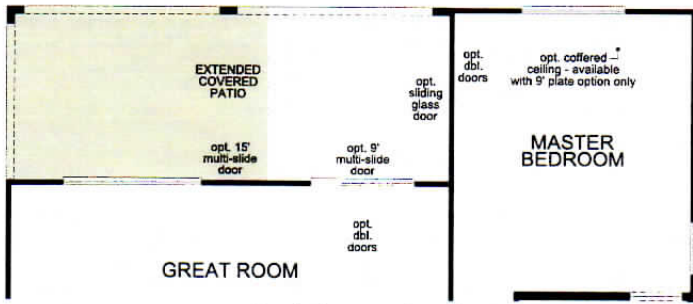
© 2016 KB Home. All rights reserved. KB Home reserves the right to change floor plan specifications, prices, financing, terms and availability without prior notice and may vary by neighborhood, homesite location and home series. Special wall and window treatments, custom paint colors, photographs, upgraded floor coverings, furniture, landscaping, custom designed walks and patio treatments and many other items featured in and around the model homes are decorator suggested, are not included in the purchase price and are not available for purchase from KB Home. Windows, columns, porches, steps and posts may vary per elevation and predetermined homesite. Renderings and floor plans are artist conception; square footage is approximate and based upon design; area may vary according to construction; landscaping shown is not standard. See options and upgrades offered at KB Home Studio. All options/upgrades may require additional charges, may require ordering at predetermined stages of construction and are subject to change/discontinuation anytime by KB Home. See sales representative for details. Equal Housing Opportunity.



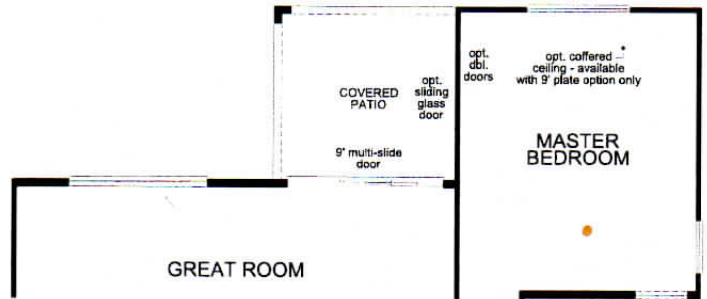
# PLAN 2348

## Floor Additional Options

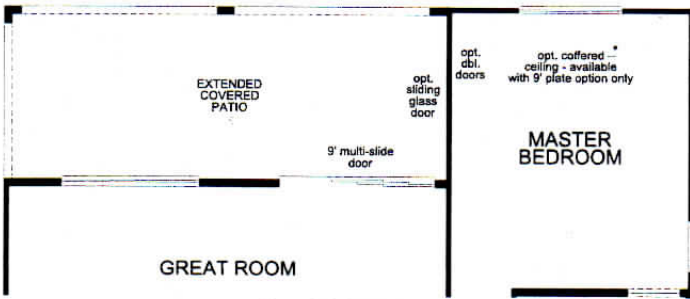
PRELIMINARY



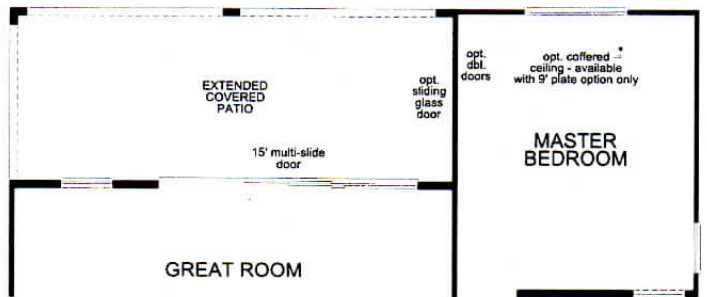
extended covered patio at great room



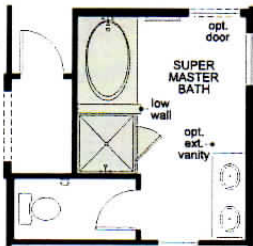
9' multi-slide door at great room



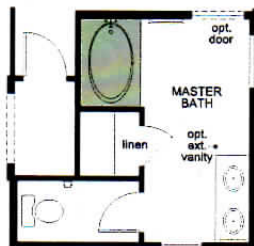
9' multi-slide door at great room (with extended covered patio)



15' multi-slide door at great room (with extended covered patio)



super master bath



garden tub at master bath



full shower at master bath



extended vanity at master bath



Your new KB home can be built to order so you'll enjoy the features you want most. Plus you can choose from a variety of personalizing interior features and details at KB Home Studio. Select appliances, cabinets, countertops, lighting, flooring, and more. Everything you need to create a home as unique as you.

## Stone Canyon Included Features

### Energy Star Qualified Homes

- R-19 Exterior wall system with R-13 wall insulation
- R-30 Insulated ceilings
- **Techshield™** Radiant Barrier Roof sheathing
- **Rheem™** gas 180,000 BTU tankless water heater
- Therma-Tru energy efficient, low maintenance fiberglass entry door
- **Carrier™** Energy efficient **16 seer gas** split system with Puron
- **Carrier COR™ WIFI Smart** digital programmable thermostat
- Energy efficient Low E vinyl windows
- Weather stripping on all exterior openings
- Whirlpool Energy Star dishwasher
- 3<sup>rd</sup> party inspected and verified for Energy Star certification
- USB Charging receptacle in kitchen and master bedroom

### Yard Package

- Desert front yard landscaping
- Automatic drip watering system
- Hose bib front and rear (per plan)
- Exterior electrical outlet at front and rear of home
- Standard Covered Patio (per plan)
- Two coach lights per plan

### Security/Safety Package

- Smoke detectors throughout
- Carbon monoxide detectors (per plan)
- **Kwikset™** privacy door locks in master bedroom and baths
- **Kwikset™** security dead bolt lock on all exterior passage doors
- Shatter resistant double pane glass patio door
- GFI outlets in kitchen, bath and garage
- Arc fault outlets in all bedrooms

### Quality Construction

- Post tension slab construction
- Concrete driveways and walkways
- Engineered roof trusses for maximum strength
- Spacious walk in closets in all master bedrooms
- OSB Roof decking and sub floor
- Random lace stucco exteriors
- 2, 4 or 6 panel doors
- **Shaw™** carpet made with Anso nylon and continuous filament construction featuring stain protection and 5 year warranty
- Carpet pad with 3/8 inch thickness and 5lb. density
- **Emser™** tile entry, kitchen, laundry and baths (select colors)
- Choice of designer exterior color schemes
- **Sherwin Williams™** Zero VOC Interior latex semi-gloss paint in wet areas including baths, kitchen and laundry
- **Sherwin Williams™** Zero VOC flat finish paint on ceilings, walls and garages
- **Boral™** concrete roof tile

- Insect screens on all operable windows and sliding glass doors
- PEX plumbing
- **Wayne Dalton™** insulated sectional garage door (style per elevation)
- 200 Amp electrical service
- Preferred copper wiring 110 volt circuits
- 2 Cable and 2 Telephone prewire (per plan)
- Interior laundry room with 220v outlet
- Ceiling fan prewires (per plan; see sales counselor for details)
- Underground utilities

### Kitchen

- Hardwood cabinetry in choice of stain
- 3cm granite with 4" backsplash (select colors)
- **Sterling™** drop-in stainless steel double basin sink with **InSinkErator** Badger 1 waste disposal system
- **Moen™** chrome faucet
- Pre-plumbed for icemaker water line
- **Seagull™** Lighting Traverse II LED recessed can lights per plan- Energy Star Qualified
- Islands per plan
- Spacious pantries per plan
- **Whirlpool™** 30" Freestanding black or white coil electric range
- **Whirlpool™** vented range hood
- **Whirlpool™ Energy Star** black or white 3-cycle dishwasher

### Baths

- Hardwood cabinetry in choice of stain
- Cultured marble vanity tops with integrated sinks
- Full width vanity mirrors
- Extended vanity with knee space in secondary bathrooms per plan
- **Moen™** low water usage shower and sink faucets
- **Sterling Watersense™** elongated commodes

### Warranty

- **10 Year** KB Home Limited Structural Warranty
  - **2 Year** KB Home Limited Mechanical Warranty
  - **1 Year** KB Home Limited Cosmetic Warranty
-