

David Weekley Homes

— T.W. LEWIS —

www.davidweekleyhomes.com

Saguaro Plan 7151

Single-Story

Courtyard Entry

*Great Room Plan with
Dining Room*

Four Bedrooms plus Study

*Three Bathrooms plus
Powder Room*

*Secluded Owner's Retreat
with Walk-In Closet*

*Oversized Owner's
Retreat Shower*

*Gourmet Island Kitchen
with Breakfast Nook*

Finished Three-Car Garage

3,467 Square Feet

The Reserve
GOLF CANYON



Elevation A



Elevation B



Elevation C

Sales Office:

18254 W. Desert Sage Dr. Goodyear, AZ 85338

480-768-4997

Hours:

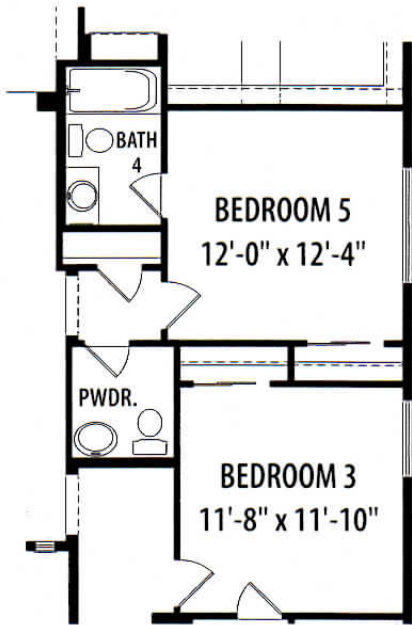
Monday 1:00pm - 6:00pm

Tuesday - Sunday 10:00am - 6:00pm

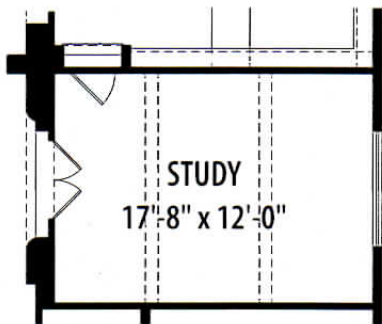
Options



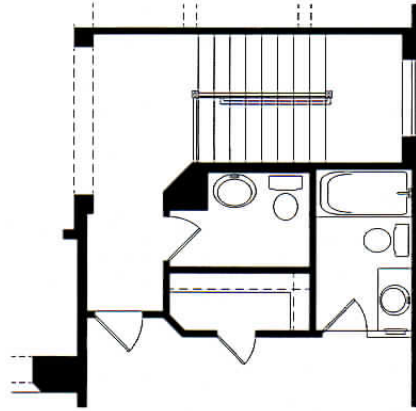
12ft. Multi-Sliding Glass Doors
at Great Room



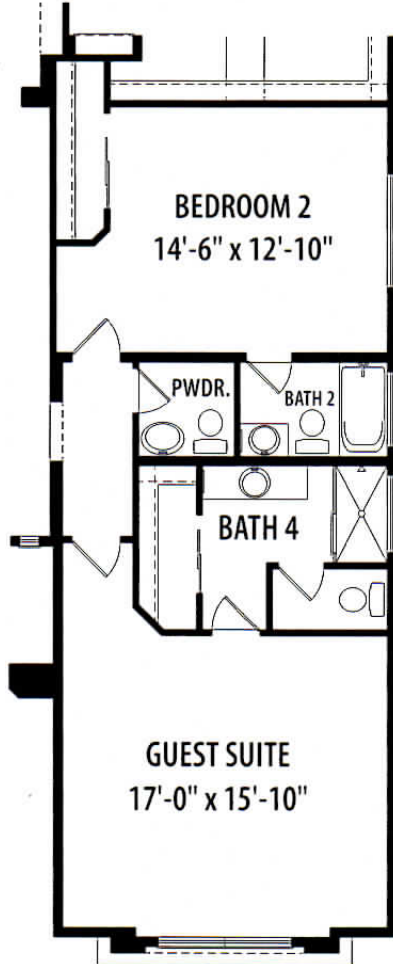
Bedroom 5 with Bath 4
I.L.O. Study



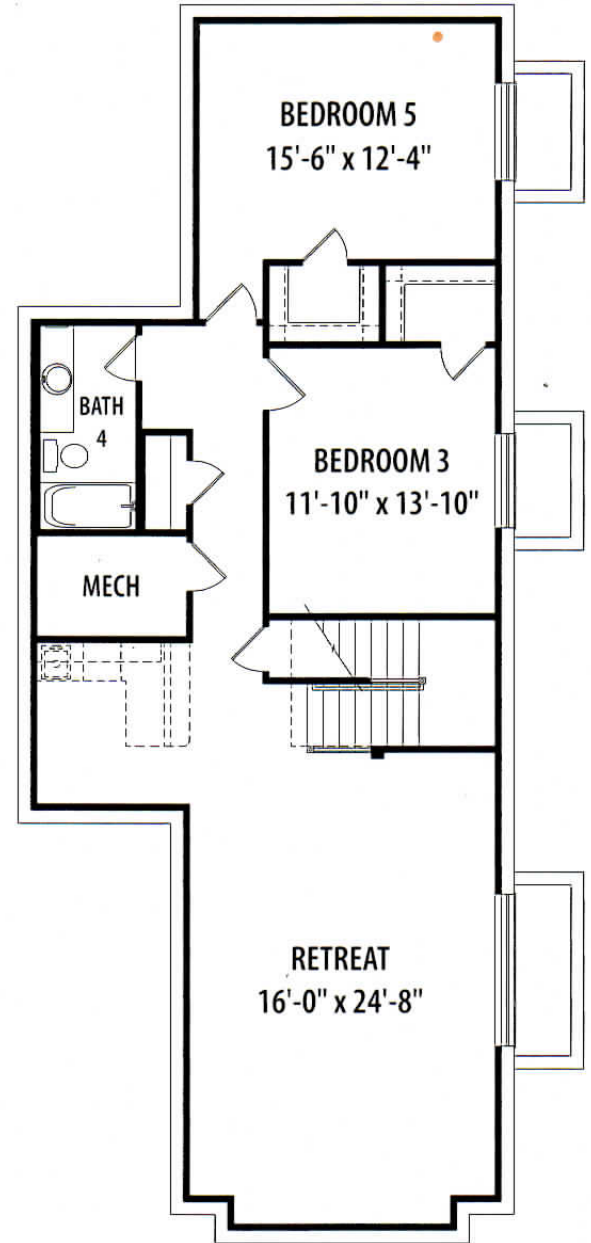
French Doors at Study



Stairs to Optional Basement



Guest Suite with Bath 4



Basement
+1,358 sq. ft.

The Reserve

GOLF CANYON

INCLUDED FEATURES

IMPRESSIVE EXTERIOR FEATURES

Authentic exterior architecture with variety of color schemes
Front yard landscaping allowance
Dramatic Thermo Tru Classic Craft Rustic series 8-foot tall entry door
Premium garage coach lights
Attractive sand stucco exterior finish
Large covered patio with stucco columns and beams
Finished garage with insulated garage doors
Garage service door
Salt-finished concrete entry walkways, driveway and patio
Taexx Pest Defense tubes in the wall system
Post-Tension Foundation

DISTINCTIVE INTERIOR FEATURES

Tray Ceilings per Plan
PPG Zero VOC interior paint
Painted interior wood window sills
Elevated 5-1/4 inch tall luxurious baseboards
8-foot tall interior doors with choice of four door styles
Premium upgraded Shaw® carpet
Extensive natural light from large windows
10-foot executive ceiling heights
Signature softened drywall corners
Hand-applied skip trowel drywall texture
Large secondary bedrooms with multi-level closet shelving
Kichler® premium designer interior lighting package
Kwikset® levered door handles with designer finish choices of brushed nickel, chrome or venetian bronze
Utility room 36-inch tall cabinets above washer and dryer
On-Q advanced wiring for phone and TV
Decora light switches (with dimmer at dining room)
Choice of eight 18-inch Ceramic tile

GOURMET KITCHENS

Granite slab kitchen countertops
GE® Stainless Steel, Built-In appliances (microwave, convection oven, stainless steel interior Energy Star® dishwasher, 36-inch electric cooktop and 36-inch exterior vented hood)
Stainless Steel under-mount kitchen sink
Maple cabinets with 36- and 42-inch staggered upper cabinet heights and crown molding in choice of 3 stains
Large kitchen islands
Recessed kitchen lighting
Extensive storage space with made-to-suit cabinetry
Pre-plumbed for reverse osmosis system

LUXURIOUS BATHS

Spa-style owner's bath retreat
Spacious walk-in owner's closet(s)
36-inch high resort-style vanity cabinetry (pedestal sink at powder room)
Recessed wood medicine cabinets in master bath
Brentwood Series® towel bar, towel ring and toilet paper holder
Tile mudset owner's shower and tub surround
Tile surround at secondary bath
Broan-Nu Tone® Energy Star quiet exhaust fans

ENERGY EFFICIENT FEATURES

5 Star+ HERS index Energy Star® qualified
2 x 6 exterior walls with R-20.5 (composite value R-24.5) blown cellulose insulation (except garages)
Cathedralized attic Insulation System, R-19 Open Cell Spray Foam
Dual-paned vinyl windows with triple coated Low E
DuPont™ Tyvek® StuccoWrap® air and water-resistive barrier
Custom Designed Lennox AC system with gas furnace
Programmable thermostat(s)
DuPont™ RoofLiner roof underlayment
50 gallon gas water heater and Pex plumbing system

David Weekley Homes

— T.W. LEWIS —

See a David Weekley Homes Sales Consultant for details. Prices, plans, dimensions, features, specifications, materials, and availability of homes or communities are subject to change without notice or obligation. Illustrations are artist's depictions only and may differ from completed improvements. Copyright © 2015 David Weekley Homes - All Rights Reserved. Phoenix, AZ



Rev 11/4/2015