

THE VAIL  
PLAN DRR-3520  
1581 LIVABLE SQUARE FEET  
GREAT ROOM, 3 BEDROOM, FLEX SPACE,  
2 BATHS, 2 BAY GARAGE

GARRETT-WALKER  
HOMES

LOCAL • EXPERIENCED • QUALITY



**FRONT ELEVATION: C**



**FRONT ELEVATION: D**  
OPTIONAL STONE VENEER SHOWN



**FRONT ELEVATION: E**



**FRONT ELEVATION: F**

PRELIMINARY  
SUBJECT TO CHANGE

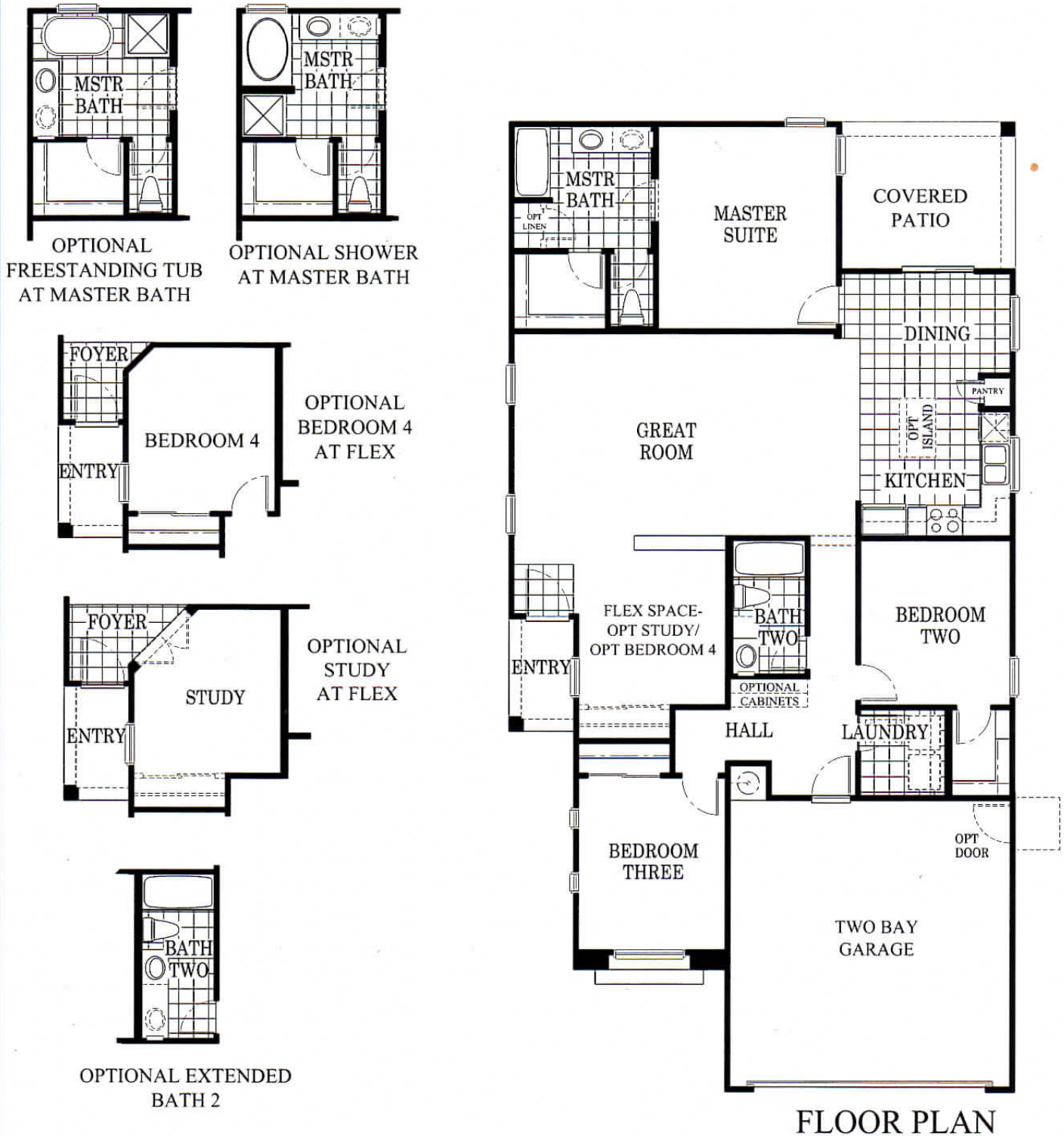
Home, features and community information are subject to change without notice or obligation.  
All Square footages are approximate. See Sales Representative for additional details

DelRioRanch113015

**THE VAIL**  
 PLAN DRR-3520  
 1581 LIVABLE SQUARE FEET  
 GREAT ROOM, 3 BEDROOM, FLEX SPACE,  
 2 BATHS, 2 BAY GARAGE

**GARRETT-WALKER**  
**HOMES**

LOCAL • EXPERIENCED • QUALITY



**PRELIMINARY  
 SUBJECT TO CHANGE**

Home, features and community information are subject to change without notice or obligation.  
 All Square footages are approximate. See Sales Representative for additional details

DelRioRanch120815



## Included Features for DEL RIO RANCH -3500 SERIES- AVONDALE

### CONSTRUCTION WITH INTEGRITY

- **2-10 Home Warranty**
- Creatively Designed Floor Plans and Elevations
- **Engineered Post-Tension Slab Foundation**
- **Covered Patio**
- Twelve Exterior Color Schemes (3 per elevation)
- Flat or 'S' Concrete Roof Tile
- Stone Veneer on 'C' & 'F' Elevations
- Low Maintenance Stucco Exterior & Fascia
- Concrete Block Privacy Fencing per Lot
- Copper Wiring (110 Volt Circuits)
- AQUA PEX Plumbing
- **13" Ceramic Tile at Kitchen, Baths & Laundry**
- Front Yard Landscaping
- Front and Rear Yard Hose Bibs
- Garage Door Opener Pre-Wire
- Smoke Detectors for Safety
- Durable Wall to Wall Carpeting in Livable Areas
- 2 Phone and 2 TV Outlets
- GFCI Outlets at Bath, Kitchen, Garage and Front and Rear of Home

### INTEGRATED ENERGY SAVINGS

- **Low 'E', Dual Pane Vinyl Windows**
  - Insulated Exterior Doors
  - High Efficiency, 14 SEER HVAC
  - Electronic Thermostat
  - 50 Gallon Electric Water Heater
  - Ceiling Fan Outlets at Master and Family
  - Exterior Walls Rated at R-19 Composite\*
  - Ceilings Rated at R-38 Over Livable Areas\*
- \*The higher the 'R' Value, the greater the insulating power.

### INSPIRED KITCHENS

- Laminate Countertops
- Durable Oak Recessed Panel Cabinetry
- 'Black on Black' Appliance Package
  - Electric Range
  - Touch Control Dishwasher
- Garbage Disposal
- Ice Maker Pre-Plumb
- Ceramic Tile Floors
- Spacious Pantry per Plan

### ELEGANT BATHS

- Laminate Vanity Tops with Porcelain Sinks
- Durable Oak Recessed Panel Cabinetry
- Elegant Chrome Fixtures and Lighting
- Easy Care Tubs and Surrounds
- Mirrored and Recessed Medicine Cabinet

### SPACIOUS INTERIORS

- **9' Flat Ceilings** (1st Floors Only)
- Hand Applied Drywall Texture
- Rounded Drywall Corners
- Six Panel Colonist Doors
- Flat Paint at All Livable Areas
- Washable Eggshell Paint at Kitchen and Baths
- 'KWIKSET' Chrome Door Hardware
- Chrome Lighting Package

### AVAILABLE OPTIONS

- *Fire Sprinkler System*
- *Garage Coach Lights*
- *Upgraded Flooring and Cabinetry*
- *Upgraded Lighting Package*
- *Upgraded Appliance Package*
- *Kitchen Islands (per Plan)*
- *Recessed Lighting*
- *Additional Wall/Ceiling Insulation*
- *Upgraded HVAC System*
- *Insulated Garage Door*
- *Garage Service Door*
- *Exterior Stone (A & C Elevation only)*

LOCAL • EXPERIENCED • QUALITY  
www.garrettwalkerhomes.com



See your Builder Representative for additional options and features. Features and options may change without notice. Home, features and community information are subject to change without notice or obligation. All Square footages are approximate. See Sales Representative for additional details.