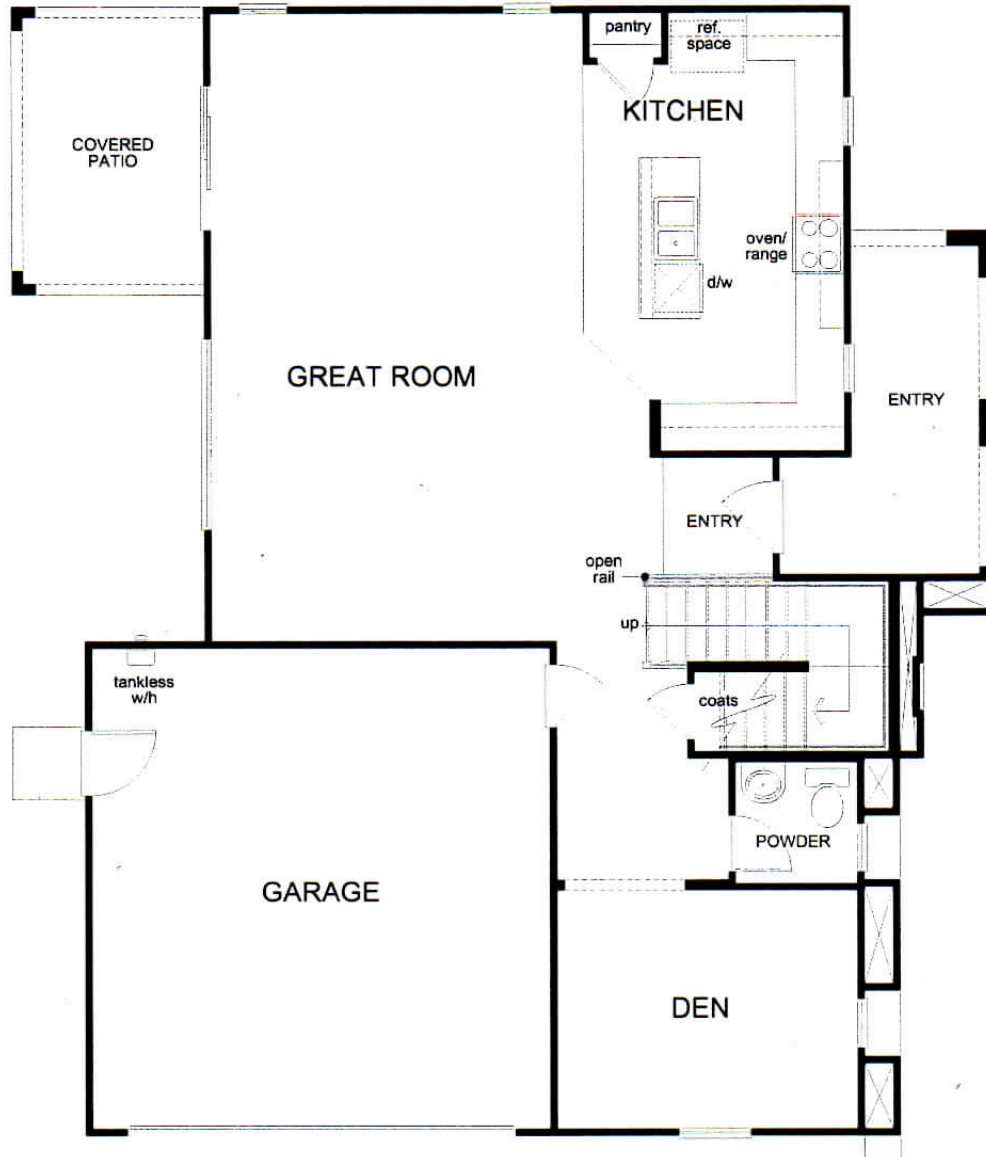


LA VENTILLA

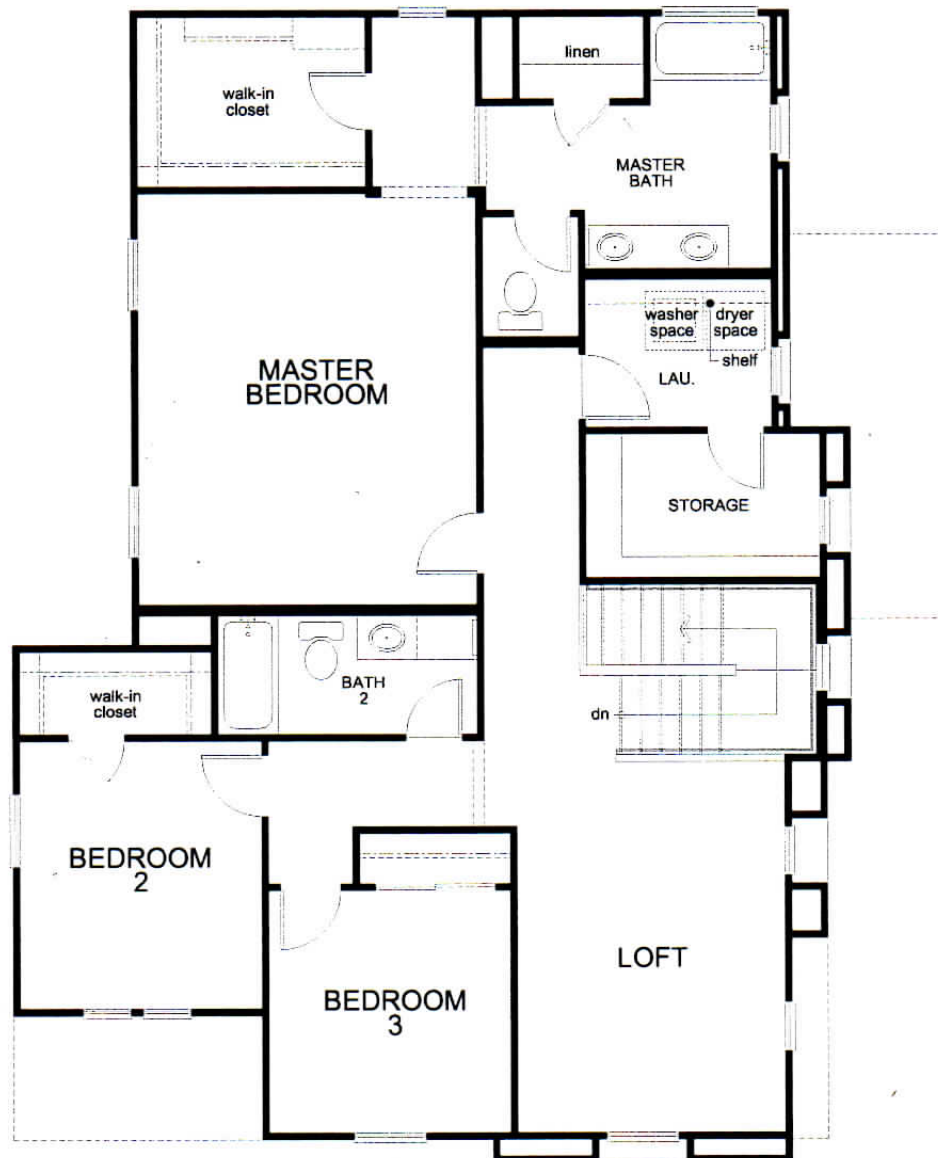
PLAN 2270

2,270 sq. ft. 3 - 5 bedrooms 2.5 - 3 baths 2 car garage





FIRST FLOOR



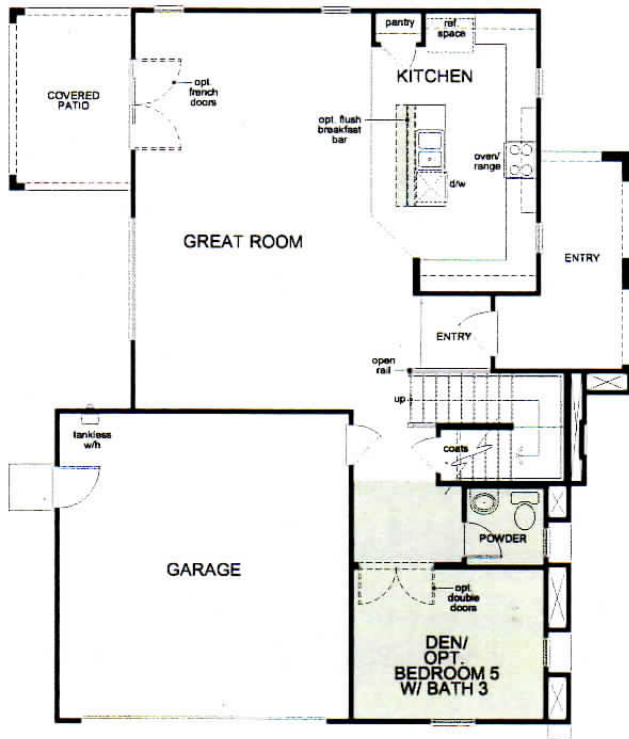
SECOND FLOOR

First Floor Options

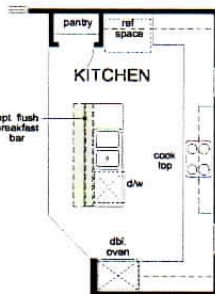
- Kitchen:**
- Gourmet kitchen, Luxury kitchen, Alternate kitchen island
- Great Room:**
- Extended covered patio, French doors
- Den:**
- Double doors
- Den / Powder:**
- Bedroom 5 with bath 3

Second Floor Options

- Master Bedroom:**
- Door, Low linen,
- Master Bath:**
- Door, Super master bath, Full shower, Extended vanity
- Bath 2:**
- Vanity with dual sinks, Full shower
- Loft:**
- Bedroom 4
- Laundry:**
- Lower cabinets, Upper cabinets
- Storage:**
- Tech area



luxury kitchen



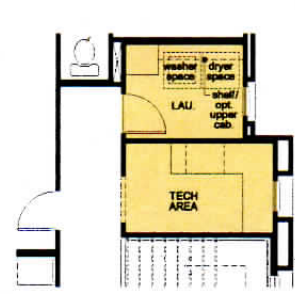
gourmet kitchen



alternate island at kitchen



bedroom 4 at loft



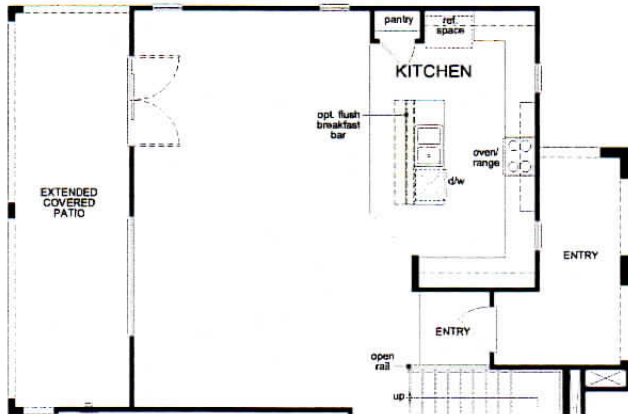
tech area at storage



Your new KB home can be built to order so you'll enjoy the features you want most. Plus you can choose from a variety of personalizing interior features and details at KB Home Studio. Select appliances, cabinets, countertops, lighting, flooring, and more. Everything you need to create a home as unique as you.

PLAN 2270

First Floor Additional Options



extended covered patio
at great room



bedroom 5 at den
with bath 3 at powder

Second Floor Additional Options



dual sinks
at bath 2



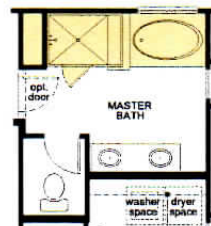
extended vanity
at master bath



garden tub
at master bath



full shower
at bath 2



super master bath



full shower
at master bath



Your new KB home can be built to order so you'll enjoy the features you want most. Plus you can choose from a variety of personalizing interior features and details at KB Home Studio. Select appliances, cabinets, countertops, lighting, flooring, and more. Everything you need to create a home as unique as you.

La Ventilla Villas Included Features

Energy Star Qualified Homes

- R-19 Exterior wall system with R-13 wall insulation
- R-30 Insulated ceilings
- *Techshield™* Radiant Barrier Roof sheathing
- *Rheem™* tankless water heater
- Therma-Tru energy efficient, low maintenance fiberglass entry door
- *Carrier™* Energy efficient 14 seer split system with Puron
- *Carrier™* digital programmable thermostat designed for energy savings
- Energy efficient Low E vinyl windows
- Weather stripping on all exterior openings
- Whirlpool Energy Star dishwasher
- 3rd party inspected and verified for Energy Star certification
- USB Charging receptacle in kitchen and master bedroom

Yard Package

- Desert front yard landscaping
- Automatic drip watering system
- Hose bib front and rear (per plan)
- Exterior electrical outlet at front and rear of home
- Standard Covered Patio (per plan)
- Two coach lights per plan
- Garage service door per plan

Security/Safety Package

- Smoke and carbon monoxide detectors throughout
- *Kwikset™* privacy door locks in master bedroom and baths
- *Kwikset™* security dead bolt lock on all exterior passage doors
- Shatter resistant double pane glass patio door
- GFI outlets in kitchen, bath and garage
- Arc fault outlets in all bedrooms

Quality Construction

- Post tension slab construction
- Concrete driveways and walkways
- Engineered roof trusses for maximum strength
- Spacious walk in closets in all master bedrooms
- OSB Roof decking and sub floor
- Random lace stucco exteriors
- 2, 4 or 6 panel doors
- *Shaw™* carpet made with Anso nylon and continuous filament construction featuring stain protection and 5 year warranty
- Carpet pad with 3/8 inch thickness and 5lb. density
- *Armstrong™* no wax vinyl in all wet areas with 5 year tough guard warranty
- Choice of designer exterior color schemes

- *Sherwin Williams™* Zero VOC Interior latex semi-gloss paint in wet areas including baths, kitchen and laundry
- *Sherwin Williams™* Zero VOC flat finish paint on ceilings and walls
- *Boral™* concrete roof tile
- Insect screens on all operable windows and sliding glass doors
- PEX plumbing
- *Wayne Dalton™* insulated sectional garage door (style per elevation)
- 200 Amp electrical service
- Preferred copper wiring 110 volt circuits
- 2 Cable and 2 Telephone prewire (per plan)
- Interior laundry room with 220v outlet
- Underground utilities

Kitchen

- Hardwood cabinetry in choice of stain
- Choice of selected *Wilsonart™* laminate countertop and 3 3/4" backsplash
- *Sterling™* drop-in stainless steel double basin sink with I.S.E. badger I waste disposal system
- *Moen™* chrome faucet
- Pre-Plumbed for icemaker water line
- Fluorescent light fixture
- Islands per plan
- Spacious pantries per plan
- *Whirlpool™* 30" Freestanding black or white coil electric range
- *Whirlpool™* vented range hood
- *Whirlpool™* Energy Star black or white 3-cycle dishwasher

Baths

- Hardwood cabinetry in choice of stain
- Cultured marble vanity tops with integrated sinks
- Full width vanity mirrors
- Extended vanity with knee space in secondary bathrooms per plan
- *Moen™* low water usage shower and sink faucets
- *Sterling Watersense™* elongated commodes

Warranty

- 10 Year KB Home Limited Structural Warranty
- 2 Year KB Home Limited Mechanical Warranty
- 1 Year KB Home Limited Cosmetic Warranty

Homeowner

Homeowner

Sales

3.6.15

For more information on
La Ventilla Villas
(888) KB-HOMES or Kbhome.com

