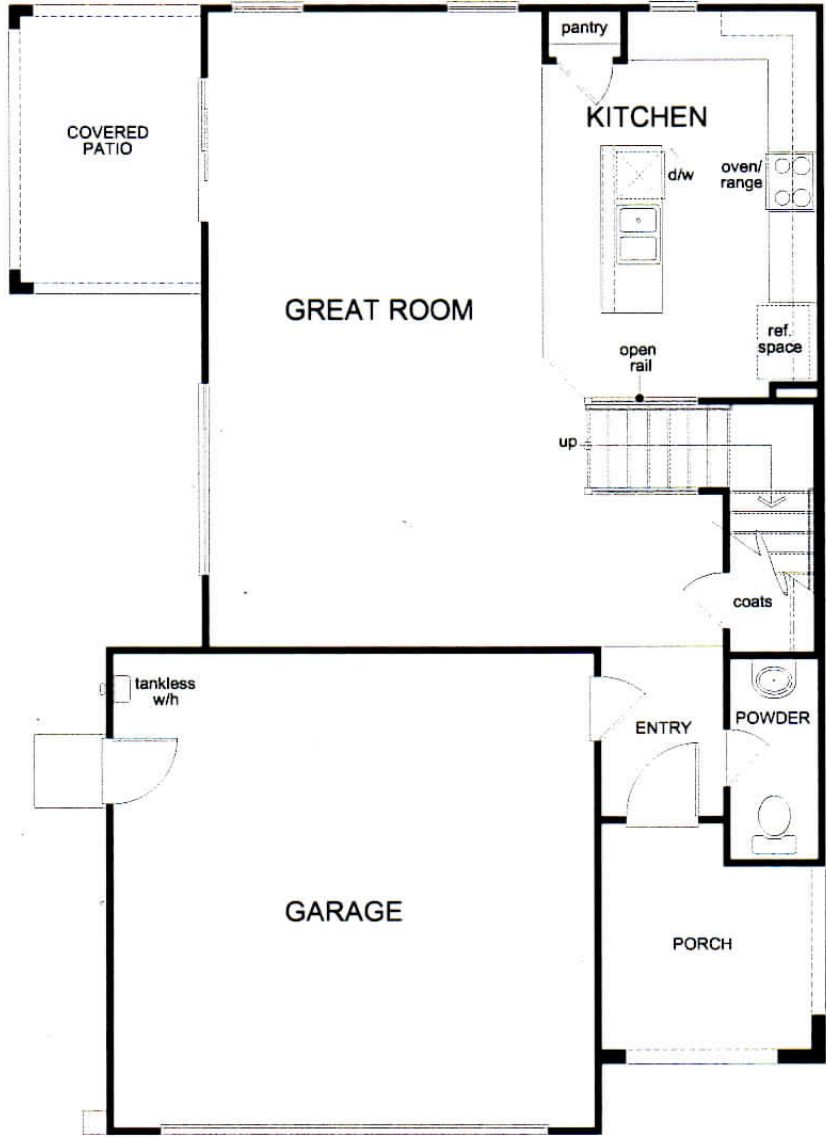


# LA VENTILLA

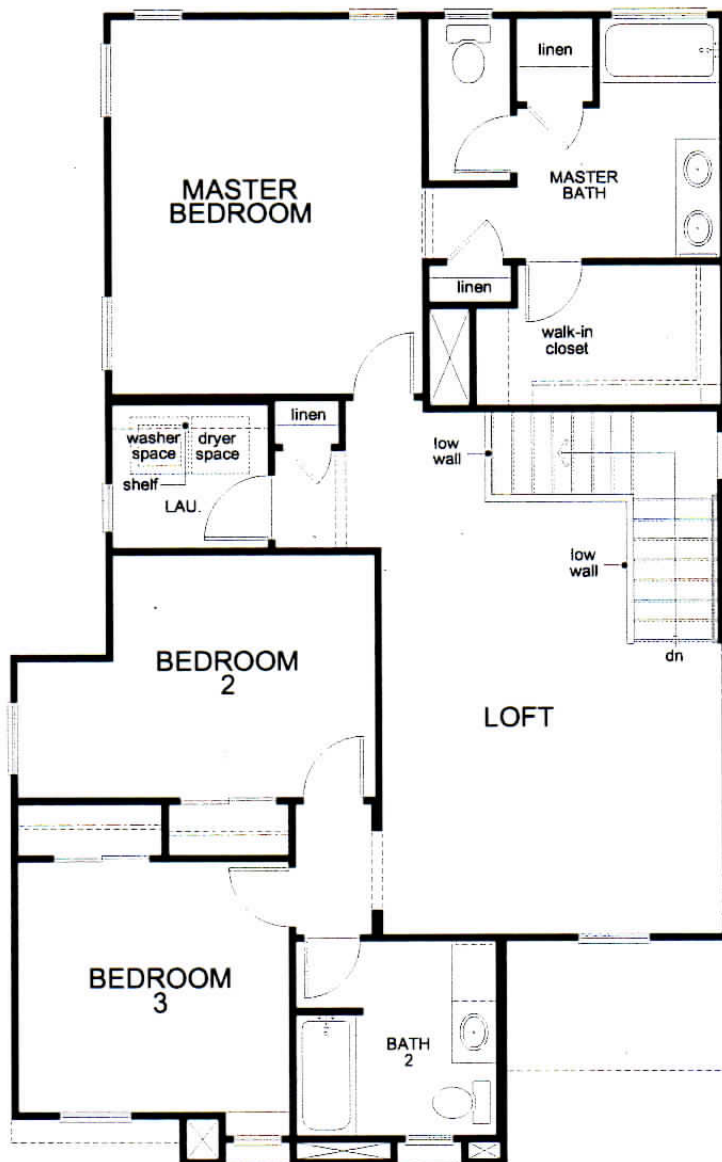
## PLAN 1932

1,932 sq. ft. 3 bedrooms 2.5 baths 2 car garage





FIRST FLOOR

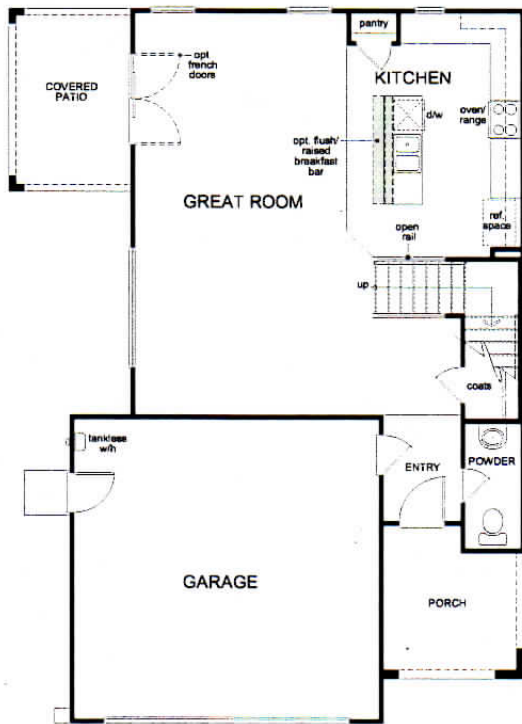


## SECOND FLOOR



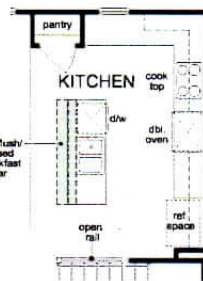
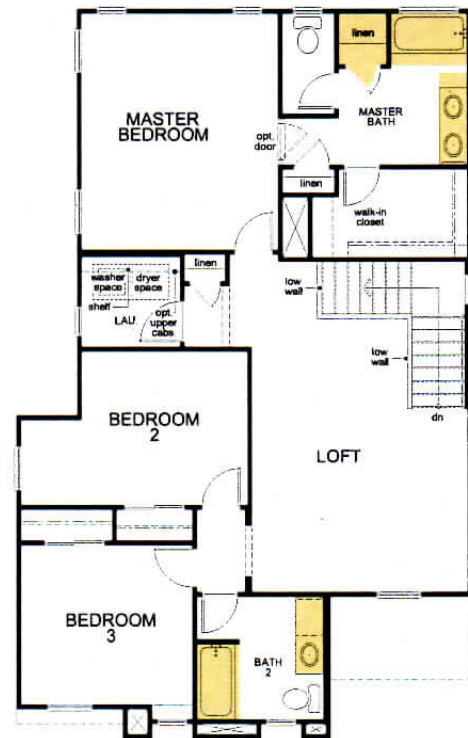
## First Floor Options

- Kitchen:**
- Gourmet kitchen, Raised breakfast bar, Flush breakfast bar, alternate island, Raised breakfast bar at alternate island
- Great Room:**
- Extended covered patio, French doors

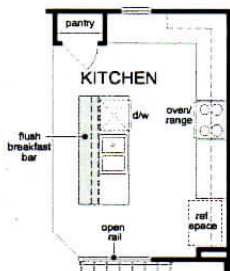


## Second Floor Options

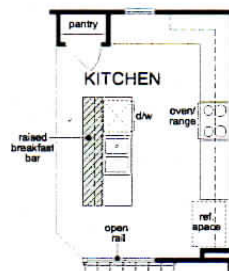
- Master Bath:**
- Door, Full shower, Super master bath, Extended vanity
- Bath 2:**
- Vanity with dual sinks, Shower in lieu of tub
- Laundry:**
- Upper cabinets



gourmet kitchen



flush breakfast bar  
at kitchen



raised breakfast bar  
at kitchen



dual sinks  
at bath 2



full shower  
at bath 2

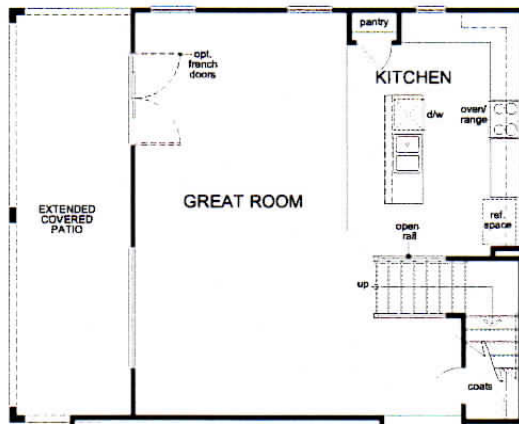


Your new KB home can be built to order so you'll enjoy the features you want most. Plus you can choose from a variety of personalizing interior features and details at KB Home Studio. Select appliances, cabinets, countertops, lighting, flooring, and more. Everything you need to create a home as unique as you.

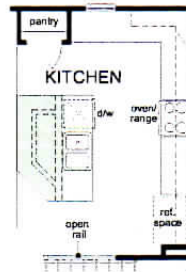
# PLAN 1932

## First Floor Additional Options

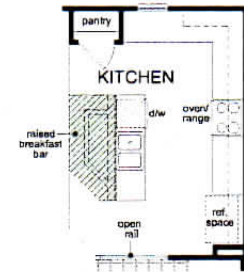
PRELIMINARY



extended covered patio  
at great room

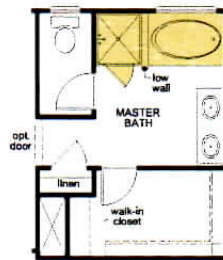


alternate kitchen  
island at  
kitchen



raised breakfast bar  
at alternate island

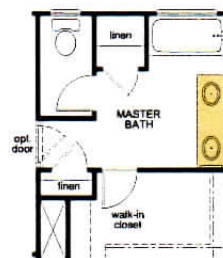
## Second Floor Additional Options



super master  
bath



garden tub  
at master bath



extended vanity  
at master bath



full shower  
at master bath



Your new KB home can be built to order so you'll enjoy the features you want most. Plus you can choose from a variety of personalizing interior features and details at KB Home Studio. Select appliances, cabinets, countertops, lighting, flooring, and more. Everything you need to create a home as unique as you.

© 2014 KB Home. All rights reserved. KB Home reserves the right to change floor plan specifications, prices, financing, terms and availability without prior notice and may vary by neighborhood, homesite location and home series. Special wall and window treatments, custom paint colors, photographs, upgraded floor coverings, furniture, landscaping, custom designed walks and patio treatments and many other items featured in and around the model homes are decorator suggested, are not included in the purchase price and are not available for purchase from KB Home. Windows, columns, porches and posts may vary per elevation and predetermined homesite. Renderings and floor plans are artist conception; square footage is approximate and based upon design; area may vary according to construction; landscaping shown is not standard. See Built to Order™ options and upgrades offered at KB Home Studio. All options/upgrades require additional charges, may require ordering at predetermined stages of construction and are subject to change/discontinuation anytime by KB Home. KB Home is not a custom homebuilder and Built to Order™ only applies to options referenced. See sales representative for details. Equal Housing Opportunity.



## La Ventilla Villas Included Features

### Energy Star Qualified Homes

- R-19 Exterior wall system with R-13 wall insulation
- R-30 Insulated ceilings
- *Techshield™* Radiant Barrier Roof sheathing
- *Rheem™* tankless water heater
- Therma-Tru energy efficient, low maintenance fiberglass entry door
- *Carrier™* Energy efficient 14 seer split system with Puron
- *Carrier™* digital programmable thermostat designed for energy savings
- Energy efficient Low E vinyl windows
- Weather stripping on all exterior openings
- Whirlpool Energy Star dishwasher
- 3<sup>rd</sup> party inspected and verified for Energy Star certification
- USB Charging receptacle in kitchen and master bedroom

### Yard Package

- Desert front yard landscaping
- Automatic drip watering system
- Hose bib front and rear (per plan)
- Exterior electrical outlet at front and rear of home
- Standard Covered Patio (per plan)
- Two coach lights per plan
- Garage service door per plan

### Security/Safety Package

- Smoke and carbon monoxide detectors throughout
- *Kwikset™* privacy door locks in master bedroom and baths
- *Kwikset™* security dead bolt lock on all exterior passage doors
- Shatter resistant double pane glass patio door
- GFI outlets in kitchen, bath and garage
- Arc fault outlets in all bedrooms

### Quality Construction

- Post tension slab construction
- Concrete driveways and walkways
- Engineered roof trusses for maximum strength
- Spacious walk in closets in all master bedrooms
- OSB Roof decking and sub floor
- Random lace stucco exteriors
- 2, 4 or 6 panel doors
- *Shaw™* carpet made with Anso nylon and continuous filament construction featuring stain protection and 5 year warranty
- Carpet pad with 3/8 inch thickness and 5lb. density
- *Armstrong™* no wax vinyl in all wet areas with 5 year tough guard warranty
- Choice of designer exterior color schemes

- *Sherwin Williams™* Zero VOC Interior latex semi-gloss paint in wet areas including baths, kitchen and laundry
- *Sherwin Williams™* Zero VOC flat finish paint on ceilings and walls
- *Boral™* concrete roof tile
- Insect screens on all operable windows and sliding glass doors
- PEX plumbing
- *Wayne Dalton™* insulated sectional garage door (style per elevation)
- 200 Amp electrical service
- Preferred copper wiring 110 volt circuits
- 2 Cable and 2 Telephone prewire (per plan)
- Interior laundry room with 220v outlet
- Underground utilities

### Kitchen

- Hardwood cabinetry in choice of stain
- Choice of selected *Wilsonart™* laminate countertop and 3 3/4" backsplash
- *Sterling™* drop-in stainless steel double basin sink with I.S.E. badger I waste disposal system
- *Moen™* chrome faucet
- Pre-Plumbed for icemaker water line
- Fluorescent light fixture
- Islands per plan
- Spacious pantries per plan
- *Whirlpool™* 30" Freestanding black or white coil electric range
- *Whirlpool™* vented range hood
- *Whirlpool™* Energy Star black or white 3-cycle dishwasher

### Baths

- Hardwood cabinetry in choice of stain
- Cultured marble vanity tops with integrated sinks
- Full width vanity mirrors
- Extended vanity with knee space in secondary bathrooms per plan
- *Moen™* low water usage shower and sink faucets
- *Sterling Watersense™* elongated commodes

### Warranty

- 10 Year KB Home Limited Structural Warranty
- 2 Year KB Home Limited Mechanical Warranty
- 1 Year KB Home Limited Cosmetic Warranty

\_\_\_\_\_  
Homeowner

\_\_\_\_\_  
Homeowner

\_\_\_\_\_  
Sales

3.6.15

For more information on  
La Ventilla Villas  
(888) KB-HOMES or Kbhome.com

