

Sunset Terrace
RAVEN



Elevation A

Available elevations:



Elevation B



Elevation C

Approx. square feet: 3,370

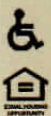
Stories: 1

Bedrooms: 3

Garage: 3-car

Plan Number: P33R

The Raven welcomes you with a covered entry that leads past a flex room—adaptable as a guest suite—and an enchanting courtyard. You'll also appreciate a study, a great room with an adjacent covered patio, and a dining room with special access to a well-appointed kitchen. The kitchen features a walk-in pantry, eat-in island and breakfast nook. Three bedrooms include a luxurious master suite with two walk-in closets and a separate tub and shower.



COMMUNITY LOCATION
13770 West Bloomington Street
Litchfield Park, AZ 85340
480-624-0244

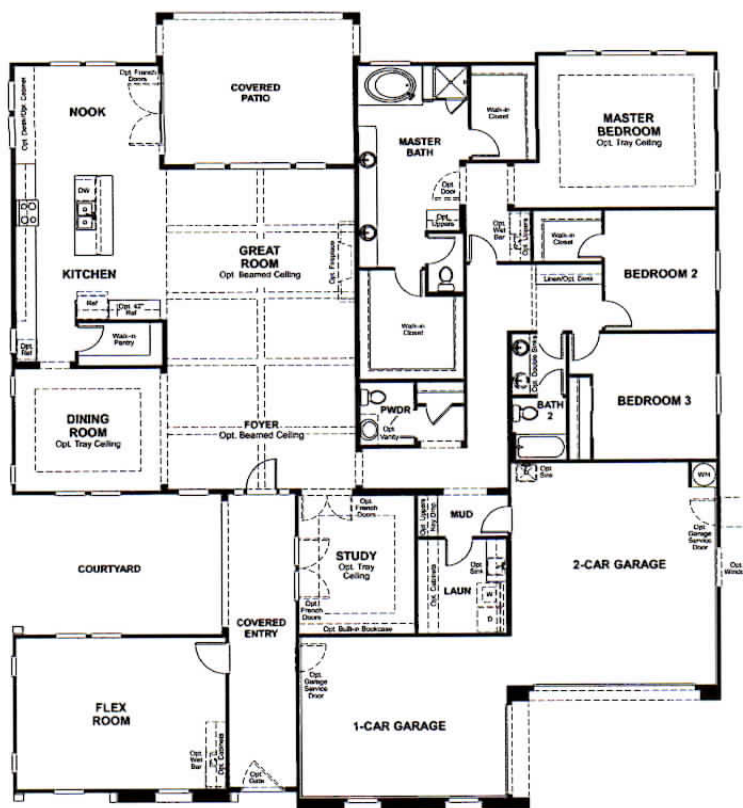
HOME GALLERY
16427 North Scottsdale Road, Suite 175
Scottsdale, AZ 85254
877-444-1485

Sunset Terrace
RAVEN

Approx. square feet: 3,370
Stories: 1
Bedrooms: 3

Garage: 3-car
Plan Number: P33R

Floor Plan
Main Floor



THIS PLAN'S PROJECTED
HERS® INDEX = 67*
Projected Rating Based on Plans – Field Confirmation Required

How does this floor plan rate?

Take a look: **100** = Standard new home* **130** = Typical resale home**
The lower the number, the better! Refer to the RESNET® HERS index brochure or go to www.RESNET.us for details.

*This information is presented for education purposes only. The HERS index for a confirmed rating will be determined by a third-party HERS rater based on data gathered from on-site observations and, if required, testing of rated features for a home as featured, optioned, located, oriented and/or built.

+Standard new home is based on the RESNET® Reference Home definition with a HERS® index of 100 (based on the 2006 International Energy Conservation Code).

++Typical resale home is based on the U.S. Department of Energy definition with a HERS® index of 130.

Floor Plan

Main Floor Options



OPT. 12' CENTER-MEET DOOR
AT FLEX ROOM



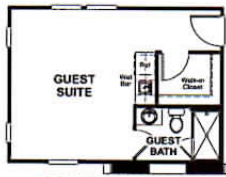
OPT. MULTI-SLIDE DOOR
AT FLEX ROOM



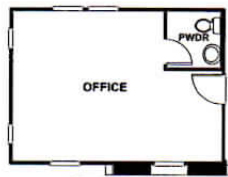
OPT. 12' CENTER-MEET DOOR
AT DINING ROOM



OPT. 12' CENTER-MEET DOOR
AT GREAT ROOM



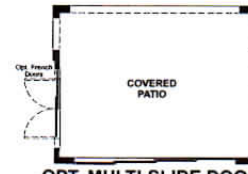
OPT. GUEST SUITE



OPT. OFFICE



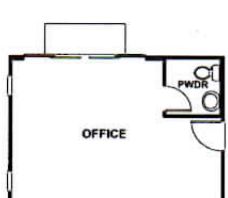
OPT. MULTI-SLIDE DOOR
AT DINING ROOM



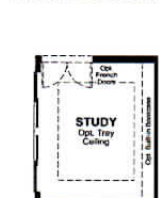
OPT. MULTI-SLIDE DOOR
AT GREAT ROOM



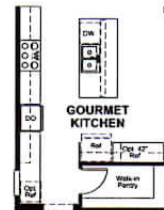
OPT. 12' CENTER-MEET DOOR
AT GUEST SUITE



OPT. 12' CENTER-MEET DOOR
AT OFFICE



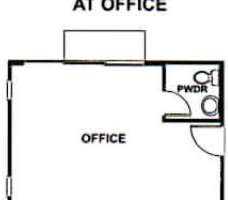
OPT. 12' CENTER-MEET
DOOR AT STUDY



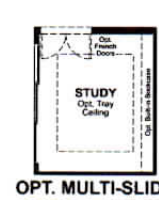
OPT. GOURMET
KITCHEN



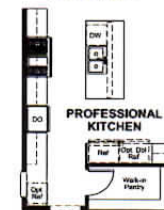
OPT. MULTI-SLIDE DOOR
AT GUEST SUITE



OPT. MULTI-SLIDE DOOR
AT OFFICE



OPT. MULTI-SLIDE
DOOR AT STUDY



OPT. PROFESSIONAL
KITCHEN



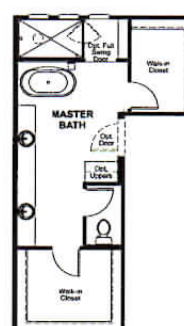
OPT. EXTENDED
WALK-IN SHOWER



OPT. WALK-IN SHOWER



OPT. MASTER SPA BATH



OPT. WALK-IN SHOWER
W/ FREE-STANDING TUB

What's a HERS® Index? HERS stands for Home Energy Rating System, a system created by RESNET® to measure home energy efficiency.®

A Projected HERS index or rating is a computer simulation performed prior to construction by a third-party HERS rater using RESNET-accredited rating software, rated feature and specification data derived from home plans, features and specifications, and other data selected or assumed by the rater. The projected HERS index is approximate and is subject to change without notice. Actual results will vary.