



ELEVATION A – SPANISH



ELEVATION B – CRAFTSMAN



ELEVATION C – COTTAGE

COTTAGES AT RIO PASEO SALES OFFICE HOURS: Open Daily 10am – 6pm, Friday 1pm – 6pm • P: 480.889.3713 • 2423 N. 149th Lane • Goodyear, AZ 85395

The prices of our homes, included features, plans, specifications, promotions/incentives, neighborhood build-out and available locations are subject to change without notice. Stated dimensions, square footage and acreage are approximate and should not be used as a representation of any home's or homesite's precise or actual size, location or orientation. There is no guarantee that any particular homesite or home will be available. No information or material herein is to be construed to be an offer or solicitation for sale. A Broker/Agent must register their client in person on client's first visit at each community for a Broker/Agent to receive a commission or referral fee, if available. Not all features and options are available in all homes. Unless otherwise expressly stated, homes do not come with hardscape, landscape, or other decorator items. Any photographs or renderings used herein reflect artists' conceptions and are for illustrative purposes only. Community maps, illustrations, plans and/or amenities reflect our current vision and are subject to change without notice. Maps not to scale. Photographs or renderings of people do not depict or indicate any preference regarding race, religion, gender, sexual orientation, disability, familial status, or national origin. Some amenities may not yet be constructed. Builder reserves the right to change the size, design, configuration and location of amenities not yet constructed and does not warrant the suitability thereof for any use or for any person. There is no guarantee that any particular homesite, home or common area will offer a view or that any particular view will be preserved. Views may also be altered by subsequent development, construction, and landscaping growth. Marketing promotions/incentives, if any, are subject to conditions or restrictions and are subject to change without notice. No warranty or guarantee is made regarding any particular area public school/school district or that any particular public school/school district will service any given community. Schools/school districts may change over time. Builder does not warrant the suitability of any trail for any use or for any person. Final Subdivision Disclosure Report (Public Report) is available at the AZ Real Estate Department's website. Our name and the logos contained herein are registered trademarks of TRI Pointe Group, Inc. and/or its subsidiaries. ROC No. 172120. AZ Broker, Maracay Realty, LLC (AZ DRE# LC538443000) © 2017 Maracay Homes, LLC, a member of the TRI Pointe Group. All rights reserved. Rev. 9/19/17

Maracay Homes®

FLEX DESIGN



LIVING SMART®

COTTAGES AT RIO PASEO

WHITMORE • PLAN 2

(MODEL)

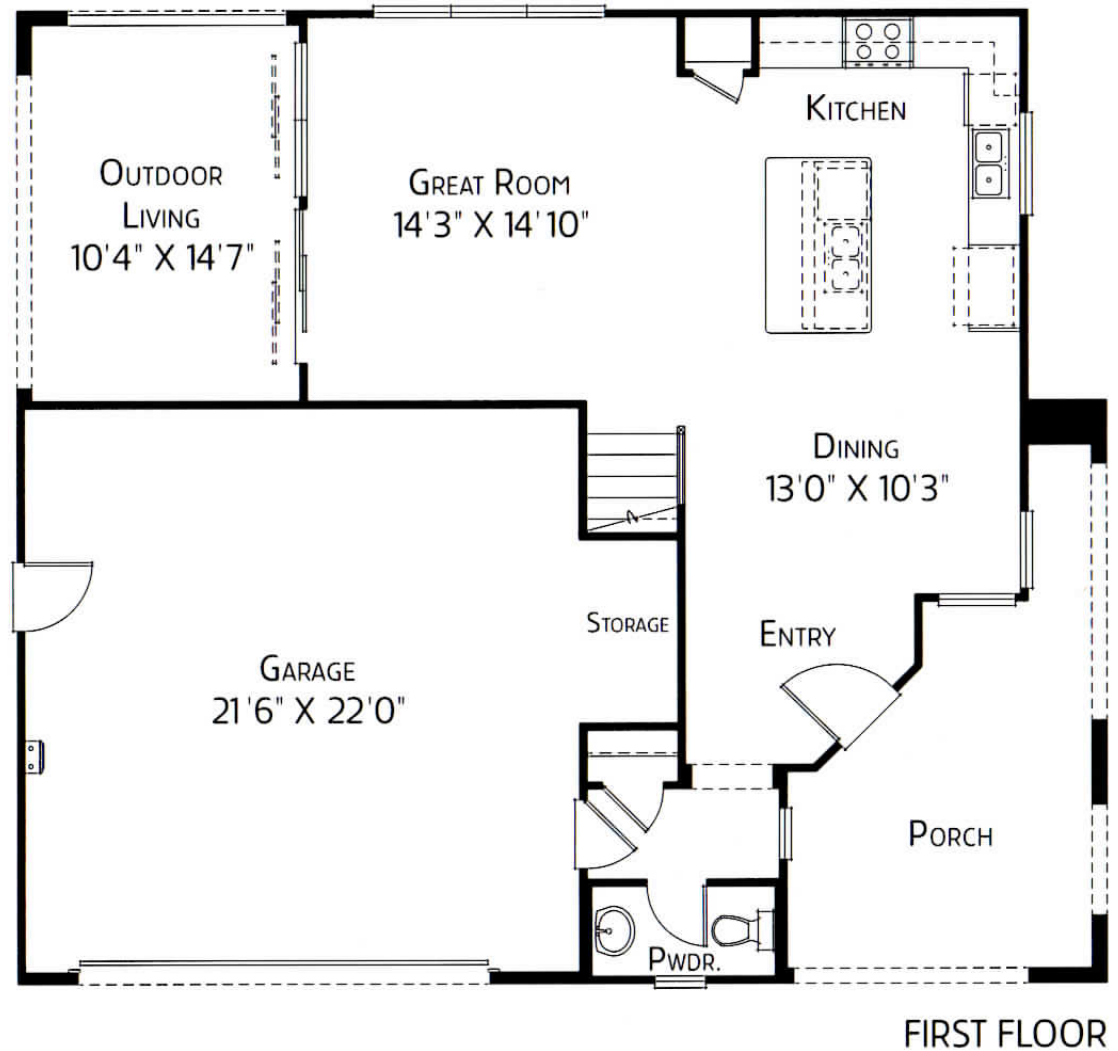
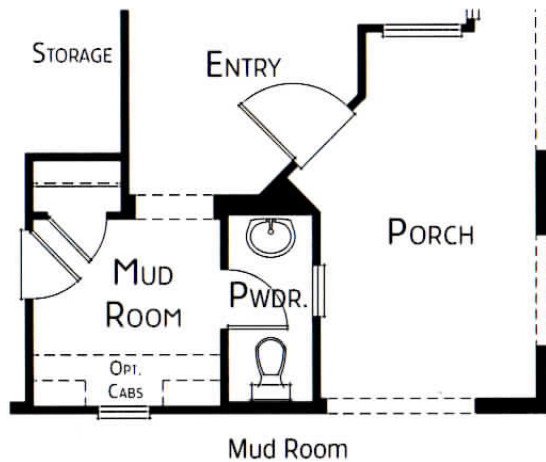
1,841 SQ. FT. · TWO STORY

3 BEDROOMS · 2.5 BATHS

2-CAR GARAGE

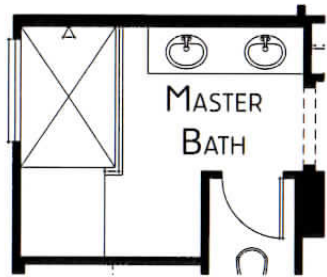
FlexDesign® Choices – First Floor

- 10' Sliding Glass Door to Outdoor Living
- Sink and Dishwasher at Island
- Mud Room

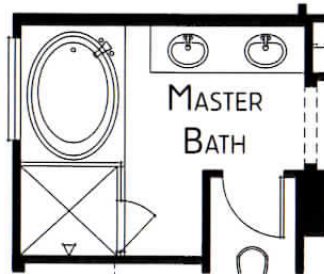


FlexDesign[™] Choices – Second Floor

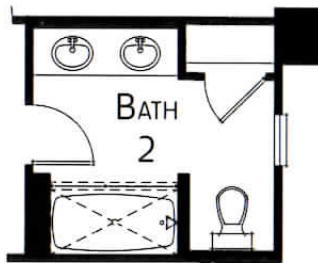
- Frameless Walk-In Shower at Master Bath
- Separate Tub/Shower at Master Bath
- Alternate Bath 2
- Shower Instead of Tub/Shower at Bath 2



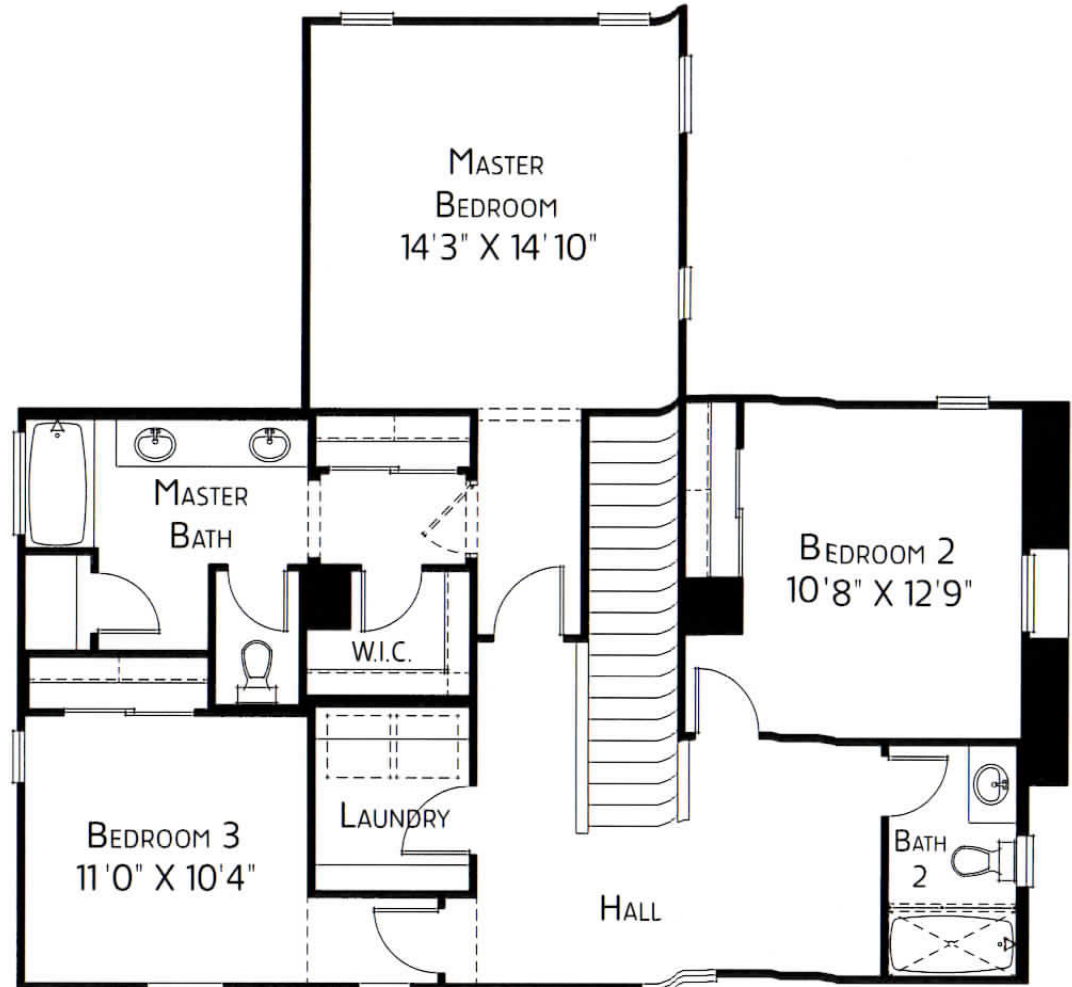
Frameless Walk-In Shower
at Master Bath



Separate Tub/Shower
at Master Bath



Alternate Bath 2



SECOND FLOOR

For more FlexDesign[™] Choices visit MaracayHomes.com

Maracay Homes[®]

FLEX DESIGN



LIVING SMART[™]

The prices of our homes, included features, plans, specifications, promotions/incentives, neighborhood build-out and available locations are subject to change without notice. Stated dimensions, square footage and acreage are approximate and should not be used as a representation of any home's or homesite's precise or actual size, location or orientation. There is no guarantee that any particular homesite or home will be available. No information or material herein is to be construed to be an offer or solicitation for sale. A Broker/Agent must register their client in person on client's first visit at each community for a Broker/Agent to receive a commission or referral fee, if available. Not all features and options are available in all homes. Unless otherwise expressly stated, homes do not come with hardscape, landscape, or other decorator items. Any photographs or renderings used herein reflect artists' conceptions and are for illustrative purposes only. Community maps, illustrations, plans and/or amenities reflect our current vision and are subject to change without notice. Maps not to scale. Photographs or renderings of people do not depict or indicate any preference regarding race, religion, gender, sexual orientation, disability, familial status, or national origin. Some amenities may not yet be constructed. Builder reserves the right to change the size, design, configuration and location of amenities not yet constructed and does not warrant the suitability thereof for any use or for any person. There is no guarantee that any particular homesite, home or common area will offer a view or that any particular view will be preserved. Views may also be altered by subsequent development, construction, and landscaping growth. Marketing promotions/incentives, if any, are subject to conditions or restrictions and are subject to change without notice. No warranty or guarantee is made regarding any particular area public school/school district or that any particular public school/school district will service any given community. Schools/school districts may change over time. Builder does not warrant the suitability of any trail for any use or for any person. Final Subdivision Disclosure Report (Public Report) is available at the AZ Real Estate Department's website. Our name and the logos contained herein are registered trademarks of TRI Pointe Group, Inc. and/or its subsidiaries. ROC No. 172120. AZ Broker, Maracay Realty, LLC (AZ DRE# LC538443000) © 2017 Maracay Homes, LLC, a member of the TRI Pointe Group. All rights reserved.

Rev. 9/19/17