

# THE RALEIGH

Approx. 2,220 sq. ft. | 1 story | 3-5 bedrooms | 2-car garage | Plan #P741



ELEVATION D

## ABOUT THE RALEIGH

You'll find plenty to love about the Raleigh plan! The center of the home boasts a large kitchen with a convenient center island and walk-in pantry, which flows into an open-concept nook and great room. The master suite is adjacent, with a private bath and a walk-in closet. There are two bedrooms and a bath off the great room and off the entry is a private study that can be optioned as a dining room, an extra bedroom and even a guest suite with a full bath and walk-in closet. Additional options include a fifth bedroom in lieu of garage storage space, a gourmet kitchen with a butler's pantry or tech center, and three deluxe master bath layouts. Includes covered patio!



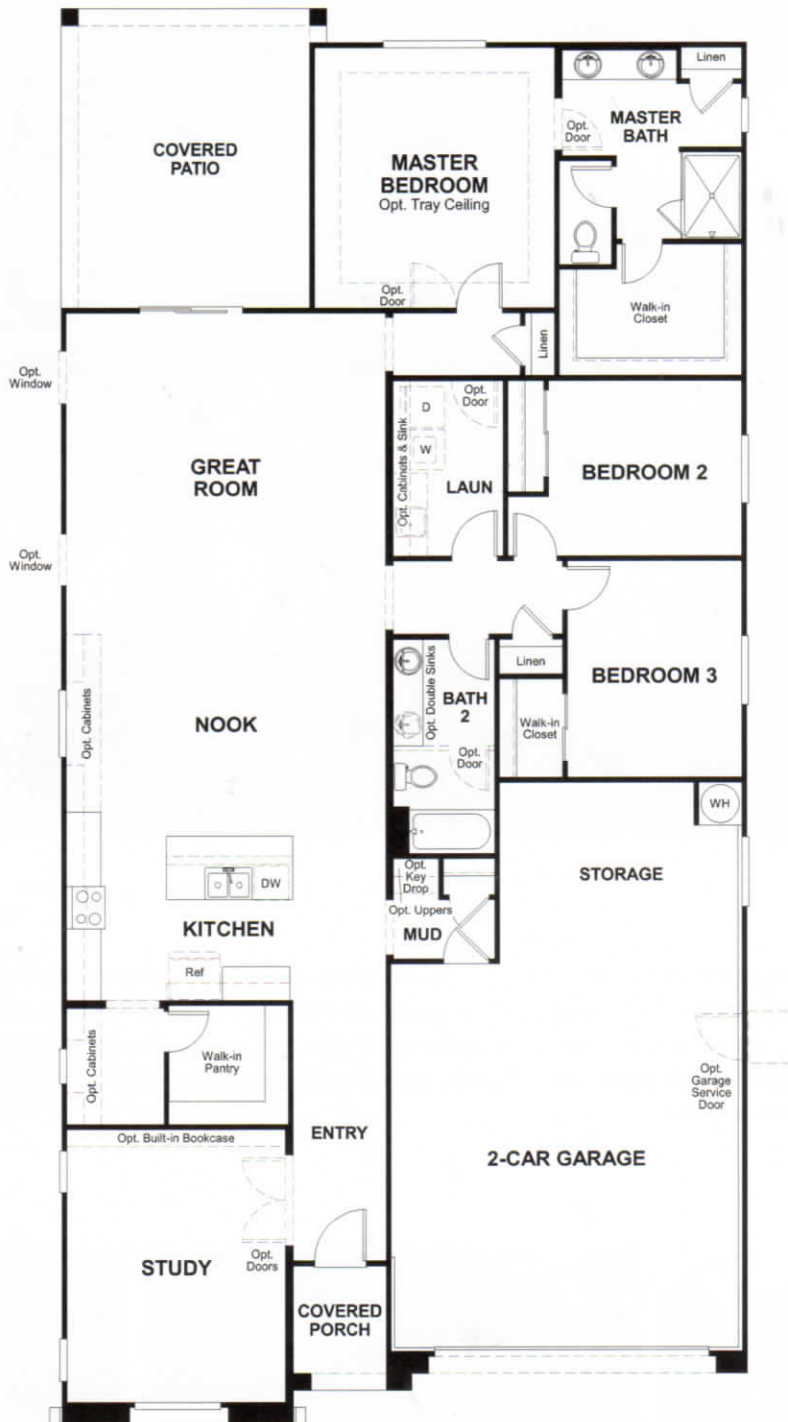
ELEVATION A



ELEVATION B



ELEVATION C



THIS PLAN'S PROJECTED  
**HERS® INDEX = 63\***  
 Projected Rating Based on Plans – Field Confirmation required

**How does this floor plan rate?**

Take a look: **100** = Standard new home+ **130** = Typical resale Home++  
 The lower number, the better! Refer to the RESNET® HERS index brochure or go to [www.RESNET.us](http://www.RESNET.us) and [www.HERSindex.com](http://www.HERSindex.com)

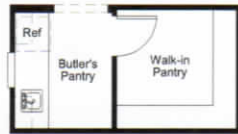
MAIN FLOOR OPTIONS



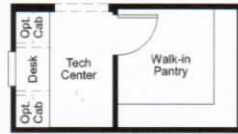
**OPT. BEDROOM 4  
W/ BATH 3**



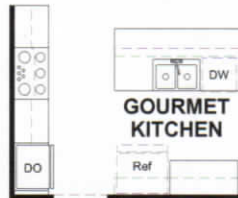
**OPT. GUEST SUITE**



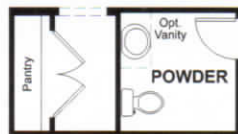
**OPT. BUTLER'S  
PANTRY**



**OPT. TECH**



**OPT. GOURMET  
KITCHEN**



**OPT. POWDER**



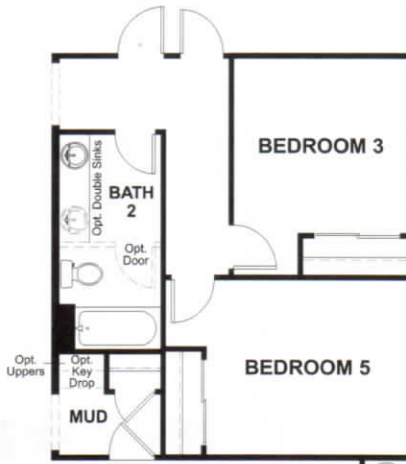
**OPT. DINING ROOM**



**OPT. MULTI-SLIDE DOOR**



**OPT. CENTER-MEET DOOR**



**OPT. BEDROOM 5**



**OPT. DELUXE  
MASTER BATH #1**



**OPT. DELUXE  
MASTER BATH #2**



**OPT. DELUXE  
MASTER BATH #3**

**What's a HERS® Index?** HERS stands for Home Energy Rating System, a system created by RESNET® to measure home energy efficiency.® A Projected HERS index or rating is a computer simulation performed prior to construction by a third-party HERS rater using RESNET-accredited rating software, rated feature and specification data derived from home plans, features and specifications, and other data selected or assumed by the rater. The projected HERS index is approximate and is subject to change without notice. Actual results will vary.