

THE CASSANDRA

Approx. 2,500 sq. ft. | 1 story | 3-4 bedrooms | 2- to 3-car garage | Plan #P642



ELEVATION D

ABOUT THE CASSANDRA

The ranch-style Cassandra plan showcases an open layout with a great room, a breakfast nook and a large kitchen that's ready to personalize with gourmet features. The master suite is adjacent, and boasts a generous walk-in closet and an attached bath that can be optioned with either a separate shower and soaking tub or a walk-in shower. Two additional bedrooms flank a full bath, and the nearby private study can be built as a fourth bedroom and third bathroom. Additional options include an extended covered patio, a 3-car garage and a dining room with a butler's pantry in place of the study.



ELEVATION A



ELEVATION B

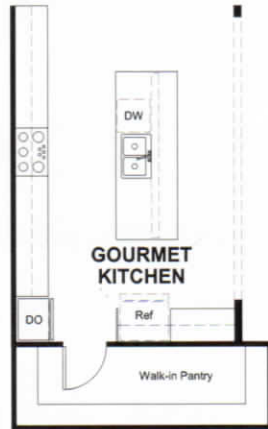


ELEVATION C

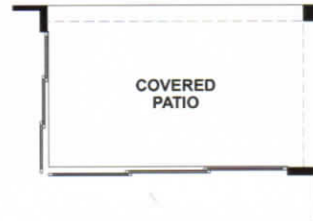
MAIN FLOOR OPTIONS



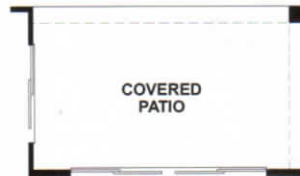
OPT. BUTLER'S PANTRY AT OPT. DINING



OPT. GOURMET KITCHEN



OPT. CORNER MEET AT GREAT ROOM/NOOK



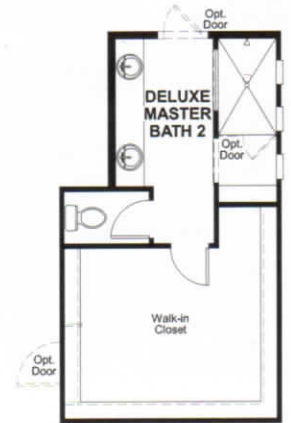
OPT. CENTER MEET AT GREAT ROOM



OPT. MULTI-SLIDE DOOR AT GREAT ROOM



OPT. DELUXE MASTER BATH #1



OPT. DELUXE MASTER BATH #2



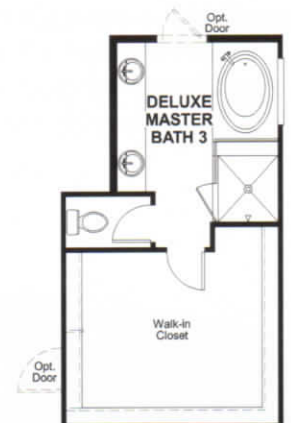
OPT. BEDROOM 4 W/ BATH 3 W/ STANDARD KITCHEN



OPT. BEDROOM 4 W/ BATH 3 W/ GOURMET KITCHEN



OPT. SIDE-LOAD GARAGE



OPT. DELUXE MASTER BATH #3

What's a HERS® Index? HERS stands for Home Energy Rating System, a system created by RESNET® to measure home energy efficiency. A Projected HERS index or rating is a computer simulation performed prior to construction by a third-party HERS rater using RESNET-accredited rating software, rated feature and specification data derived from home plans, features and specifications, and other data selected or assumed by the rater. The projected HERS index is approximate and is subject to change without notice. Actual results will vary.