

# THE CELESTE

Approx. 2,400 sq. ft. | 1 story | 3-5 bedrooms | 3- to 4-car garage | Plan #P243



ELEVATION D

## ABOUT THE CELESTE

The heart of this ranch floor plan is an open layout with a great room, a breakfast nook and a kitchen with a walk-in pantry and a center island. The master suite is adjacent, and showcases a generous walk-in closet and an attached bath with double sinks and three deluxe options. A private study, two bedrooms and a bath round out the residence. Need more sleeping space? Choose a fourth bedroom in lieu of the study, and a fifth bedroom and third bathroom in place of the tandem garage space. Additional personalization options include gourmet features in the kitchen, a tray ceiling in the foyer and double doors in the study. A covered patio is included!



ELEVATION A

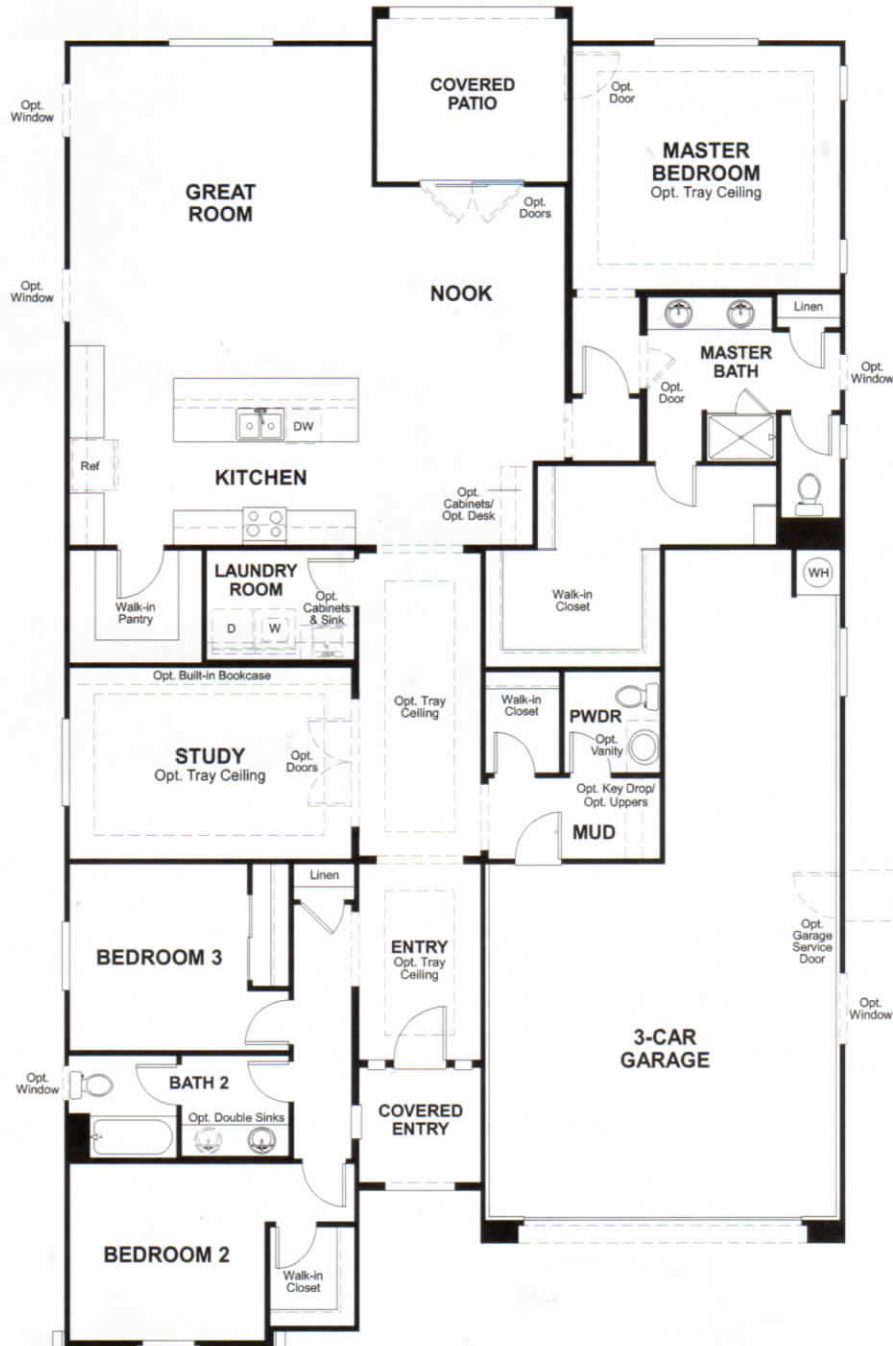


ELEVATION B



ELEVATION C

MAIN FLOOR



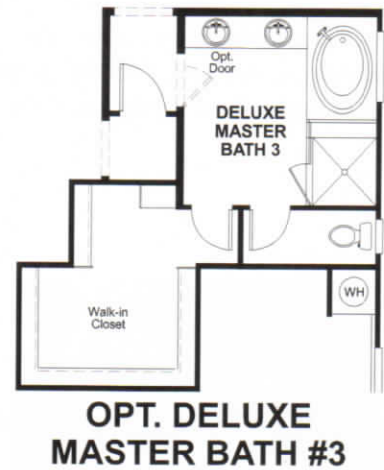
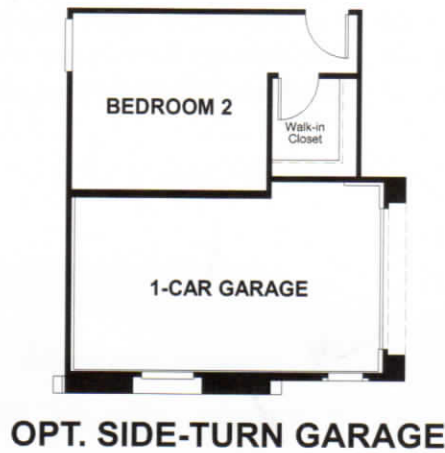
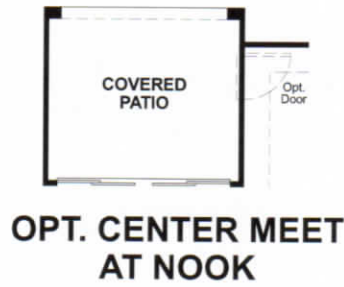
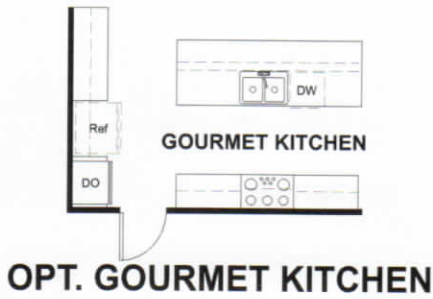
THIS PLAN'S PROJECTED  
**HERS® INDEX = 63\***

Projected Rating Based on Plans – Field Confirmation required

**How does this floor plan rate?**

Take a look: **100** = Standard new home+ **130** = Typical resale Home++  
The lower number, the better! Refer to the RESNET® HERS index brochure or go to [www.RESNET.us](http://www.RESNET.us) and [www.HERSindex.com](http://www.HERSindex.com)

MAIN FLOOR OPTIONS



**What's a HERS® Index?** HERS stands for Home Energy Rating System, a system created by RESNET® to measure home energy efficiency. A Projected HERS index or rating is a computer simulation performed prior to construction by a third-party HERS rater using RESNET-accredited rating software, rated feature and specification data derived from home plans, features and specifications, and other data selected or assumed by the rater. The projected HERS index is approximate and is subject to change without notice. Actual results will vary.